

# EAUZONE



**matki**

## MATKI

For 50 years Matki has led the way in luxury Showering Design. Our Shower Screens, Shower Trays and Brassware are characterised by their elegant style, reliable performance and outstanding longevity.

All Matki products are designed and made in the United Kingdom. Shower Screens are handmade near Bristol, Shower Trays in Cornwall, and Brassware in Hampshire.

Safety and Quality are central to our ethos and all products and components are tested way beyond industry standards. We have an experienced and attentive Customer Service Team and meaningful guarantees.

Our products can be purchased in the UK, Ireland and France through an extensive Matki Dealer Network, a list of which is available on the Matki website. We strongly recommend viewing displays prior to purchase.

## E A U Z O N E

Elegant, beautifully proportioned designs; Reassuringly structural 10mm thick glass; Real solid brass hardware; EauZone is the perfect choice for luxury showering.

Designed by the Matki in-house Design Team, EauZone represents the pinnacle of innovation and performance in showering. Patents and Design Rights are held for key design features such as the superbly strong anti-slip hinges and expertly curved Radius-20 glass.

Every component is handmade to order in the Matki factory near Bristol by our expert production teams and each EauZone product is carefully checked prior to delivery.

Find the perfect fit for your bathroom with Sliding and Hinged Doors, Wet Room Panels and Bath Screens offered in thousands of sizes and setups. Beyond that EauZone can be tailor-made to your exact requirements with EauZone Bespoke and Ultra Bespoke.

The choices are truly endless.



2

NEW WET ROOM PANELS



32

QUINTESSE ENCLOSURES



42

BESPOKE & ULTRA BESPOKE



10

SLIDING ENCLOSURES



16

HINGED ENCLOSURES



34

BATH SCREENS



36

HARDWARE & SPECIAL FINISHES



74

SHOWER TRAYS



## NEW! EAUZONE WET ROOM

A new level of elegance for wet rooms. Elevate the style and desirability of your shower area with exciting special finishes and eye-catching finishing touches.

The new EauZone Wet Room Panels secure reassuring 10mm thick Safety Glass to the wall with either aluminium or brass wall frames and a beautifully proportioned solid brass bracket.

### BEST ON BRASS

The brass frames and bracket come in an array of special finishes, plated and hand-polished in the United Kingdom by Swadling Brassware, see page 39. Brushed and polished finishes are at their very best on brass and match sublimely with other luxury bathroom fittings.



EWP - EAUZONE WET ROOM PANEL; BRUSHED BRASS



## ACCESSORISE

To add individual style to your wet room panel, Towel Rails can provide added practicality and decoration, and the new Accent Frames create an alluring sense of definition and unique character.

For pricing and specification please see page 37.



EWP - EAUZONE WET ROOM PANEL WITH LINEAR TOWEL RAIL; BRUSHED BRASS



EWP - EAUZONE WET ROOM PANEL WITH VERTICAL ACCENT FRAME; BRUSHED BRASS



EWP - L-BRACKET CLOSE UP; BRUSHED BRASS



EWFP - EAUZONE FRAMED WET ROOM PANEL; BRUSHED BRASS





EWMP - EAUZONE FRAMED WET ROOM PANEL WITH SILVER MESH GLASS; POLISHED CHROME

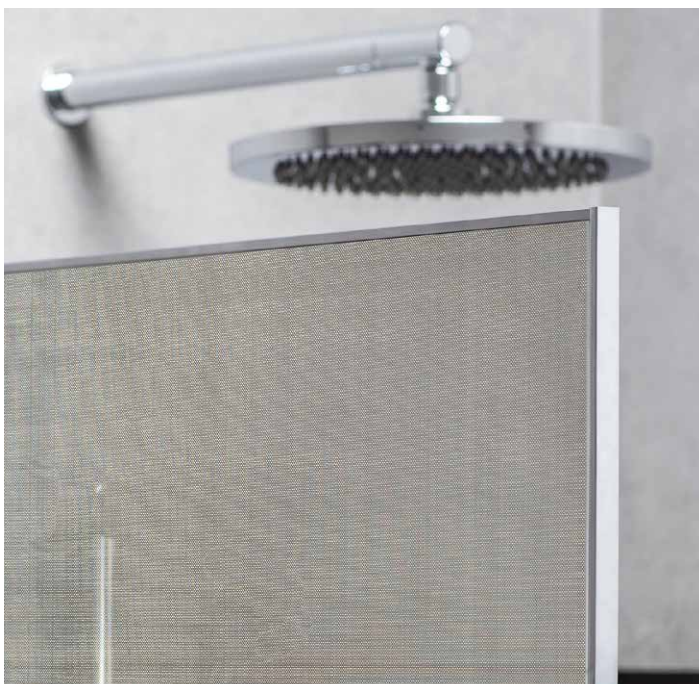
## STRIKING SUBTLETY

Beautifully finished brass frames enclose this wet room panel and enthral at every glint of light they reflect. Minimally proportioned but highly impressive the all-round framing is in harmony with the Matki design principle of understated elegance, and opens up a wealth of unique styling opportunities.

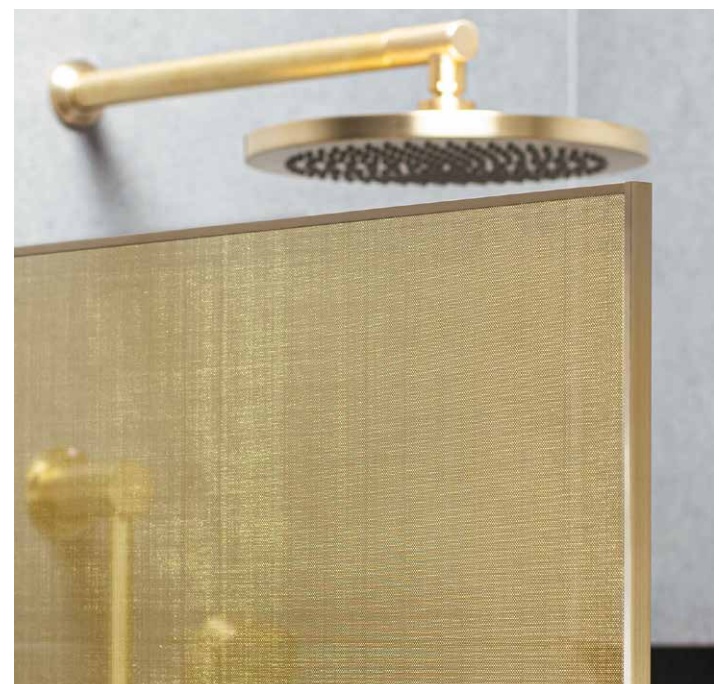
## MESH GLASS IN SILVER OR GOLD

Spell-binding in its shimmering effects and hand-woven appearance, mesh glass transforms a wet room panel into a highly decorative partition. The silver or gold mesh is framed all around and interacts in complimentary or exciting ways with different frame finish combinations.

For pricing and specifications please see page 64 for EWFP, Fully Framed Wet Room Panel, and page 65 for Framed Wet Room Panels with Silver and Gold Mesh Glass.



EWMP - SILVER MESH GLASS WITH POLISHED CHROME FRAMING



EWMP - GOLD MESH GLASS WITH BRUSHED BRASS FRAMING

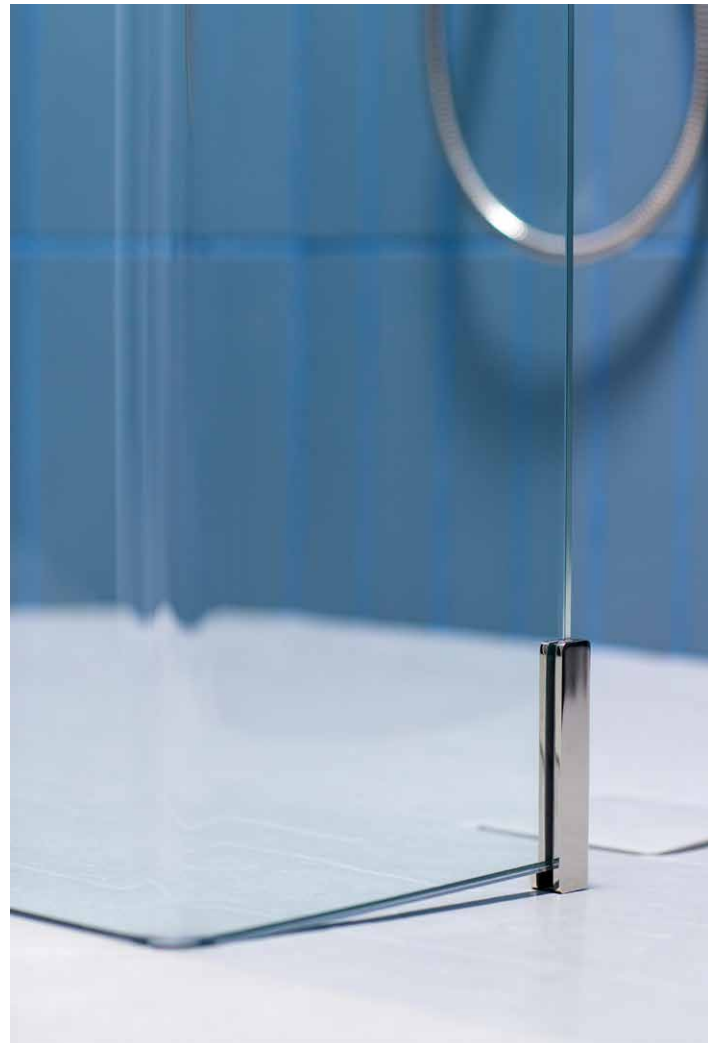


## EAUZONE RADIUS - 20 WET ROOM PANEL

Unparalleled, distinctive and completely unique, the Radius-20 is engineered from a single sheet of 10mm glass, expertly curved to achieve a softened, fluid edge with a tight 20mm inner radius. Both contemporary and practical, the panel offers a return for extra splash protection, whilst avoiding the need for UV bonds and aluminium corner profiles.

The Radius-20 now comes with an adjustable Floor Bracket for safe positioning on shower trays and tiled floors.

See page 66 for Sizes, Prices and Specification.



EWL - FLOOR BRACKET; POLISHED NICKEL



EWL - GLASS DETAIL



EWL - EAUZONE RADIUS-20 WET ROOM PANEL; POLISHED NICKEL





## SPLASH PROTECTION

A luxurious but highly practical wet room screen, perfect for added flexibility and protection against splash and spray. The EauZone Wet Room Panel With Hinge Panel features an innovative discreet **watertight sealing system** which minimises the seal size whilst achieving excellent water retention at the panel join.

See specification and pricing on page 67.



ABOVE: EWT – EAUZONE 12MM GLASS WET ROOM PANEL

LEFT: EWPH – EAUZONE WET ROOM PANEL WITH HINGE PANEL



AST – EAUZONE TWIN ENTRANCE WET ROOM PANEL





## SLIDING DOORS

The look and feel of luxury, EauZone Sliding Doors pair a balanced and highly finished appearance with the smoothest, whisper quiet sliding motion.

**Stainless Steel** wall frames and top track are mirror-polished to achieve an impressively reflective surface. Their high tensile strength is ideally suited to carrying the **10mm safety glass** smoothly on the specially shaped track inners.

Easy to clean with **Matki Glass Guard Easy Clean Protection** applied as standard and a **quick door release mechanism** to clean the door-panel overlap, EauZone Sliders have been **CE-Tested to 150,000 open and close cycles**, equivalent to over 100 years of use.

Please see pages 46 – 49 for Sliding Door pricing and specifications.





## OPTIONS

EauZone Sliders are available in three Frame Finishes: Chrome/Mirror-Polished Stainless Steel (Standard); Brushed Steel; and Gold.

Special Glass Finishes are available for most sizes.

## INSTALLATION

EauZone Sliders can be installed on a Shower Tray or Shower Floor, or directly onto a tiled Wet Room floor.



EPST - EAUZONE SLIDER THREE-SIDED

EPSR - EAUZONE SLIDER FOR RECESS













## CURVED CORNER

### A DESIGN FIRST

Uniquely, every panel including the door of the EauZone Curved Corner is engineered from 10mm glass, an impressive testament to the unit's strength and durability and a complete first in Curved Shower Enclosure design.

Taking inspiration from the successful EauZone Slider, the Curved Corner is built from the same high performing materials with a Stainless Steel top track and intricately shaped inner tracks, allowing for a superbly smooth opening movement.

See page 50 for Sizes, Prices and Specification.



ECS900 – EAUZONE CURVED CORNER

## HINGED DOORS

Elegantly designed to accentuate clarity and simplicity, the vertical and horizontal lines of EauZone Hinged Doors are kept free from any visual disruption. Subtle, sleekly styled L-brackets hold the glass firmly in place from the top and blend into the balanced proportions of the design.

Specially crafted **EauZone Anti-Slip Hinges (Patent Number 2470778)** hold the heavy weight of **10mm Safety Glass** securely in place.

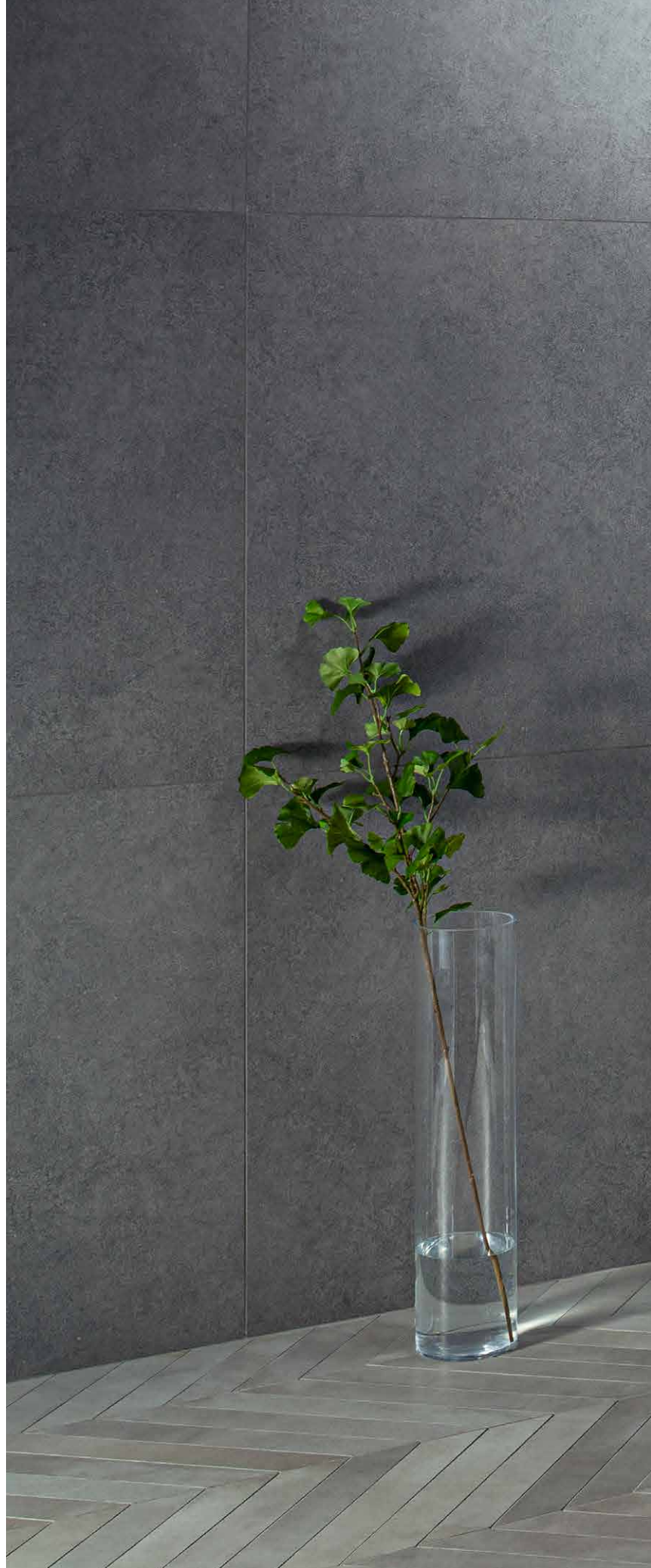
EauZone Hinged Doors come with **Matki Glass Guard Easy Clean Protection** as standard and are **CE-Tested to 100,000 cycles of open and close**, 5 times the industry requirement.

Please see pages 51 – 61 for Hinged Door pricing and specifications.



L-BRACKET DETAIL IN CHROME

EPIC – EAUZONE HINGED DOOR WITH HINGE PANEL AND INLINE PANEL FOR CORNER;  
POLISHED CHROME, WITH FRAME ACCENTS











## CHOICE

The EauZone Hinged Collection has a vast selection of over 1,000 standard sizes and panel combinations, making luxurious showering a possibility for any shape or size of bathroom. For specialist projects, EauZone Bespoke and Ultra Bespoke offer made-to-measure size and shape glass.

## FRAME ACCENTS

Add decoration and definition to your EauZone Shower with beautifully finished Frame Accents. Pictured here in Aged Brass, these pure brass trims come in a choice of Swadling Brassware finishes.



EPI – EAUZONE HINGED DOOR WITH HINGE PANEL AND INLINE PANEL FOR RECESS; AGED BRASS, WITH FRAME ACCENTS



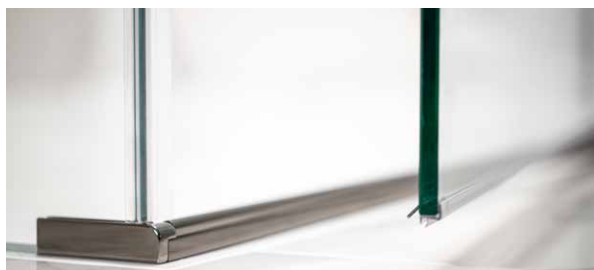
## EAUZONE SPECIAL FINISHES

Only the best will do - when you choose EauZone in a special finish, it really is special. To ensure the finish looks its absolute best, Matki manufacture special finish EauZone products exclusively from brass, which is then plated, polished, brushed or aged by our team at Swadling Brassware. This results in frames and fittings which match perfectly together and harmonize much more closely with other special finish fittings in your bathroom.

### BLACK CHROME

A new addition, Black Chrome is a luxurious and exciting colour, which like chrome is highly reflective and hard-wearing. Ours is a trivalent chrome which is better for the environment as the chemicals involved are less harmful and cleaner to recycle.

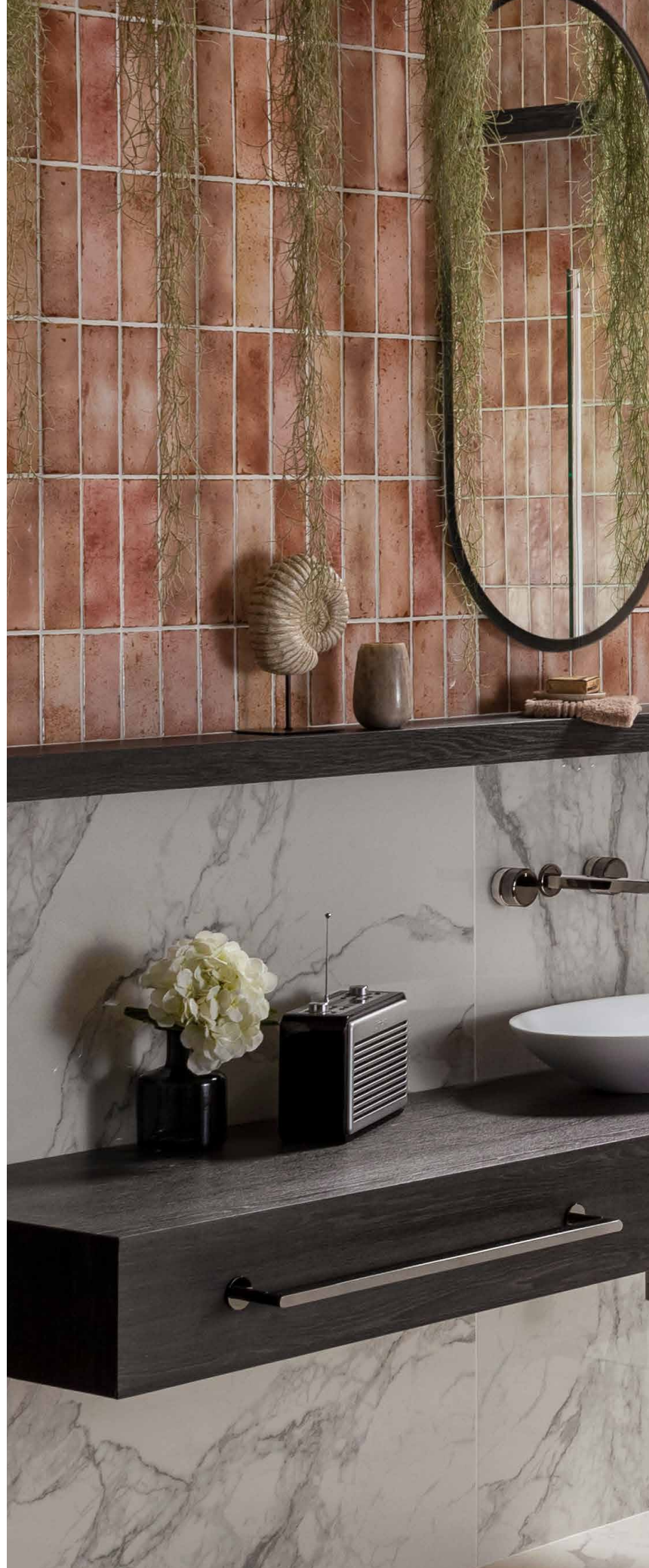
See page 38-39 for more details on Special Finishes.



THRESHOLD DETAIL IN BLACK CHROME



L-BRACKET DETAIL IN BLACK CHROME













## GLASS AND SPECIAL GLASS FINISHES

EauZone uses only 10mm thick safety glass. This gives the doors and panels a substantial appearance and confidence-inspiring feel. The glass is all in conformance with EN-12150-1 and is regularly tested to ensure safety and compliance.

All EauZone Hinged Doors are available in Special Glass Finishes with the Bespoke and Ultra Bespoke offerings. There is a choice of Standard Clear Glass, Tinted Glass in a number of colours, Ultra Clear Low Iron, Satin/Frosted and the exciting Ultra Black Glass. Ultra Black and Satin/Frosted finishes are ideal for privacy purposes.

See page 40 for more details on Special Glass Finishes.



## THE EAUZONE HINGE

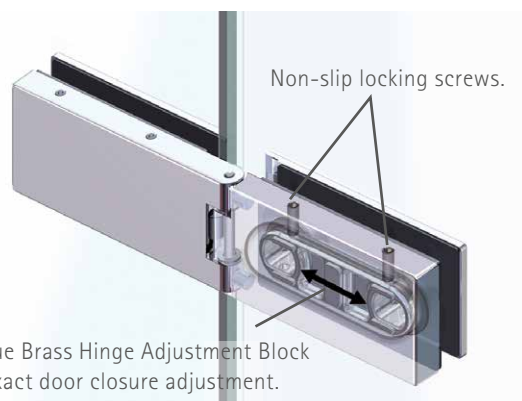
The **EauZone Anti-Slip Hinge (Patent Number 2470778)** was designed by Matki for EauZone Hinged Doors specifically for 10mm thick glass.

The hinge has three main features:

**Strength** – To securely hold heavy glass doors in place for year after year without dropping, the hinge secures onto an Adjustment Block which is bonded to the glass. Two locking screws, once tightened, eliminate any possibility of the door dropping over time.

**Water-Tight Design** – The hinge allows the vertical door seal to travel continuously through it, with no cuts or holes. This ensures it is completely water-tight even during cleaning.

**Calibrated Spring-Loading** – Set to close at just beyond 180 degrees, the hinge permanently pushes at the closure seal and creates a water-tight barrier without the use of friction. This means the door is easy to open and close and if knocked inadvertently during showering will return to closed position.



Unique Brass Hinge Adjustment Block for exact door closure adjustment.









## HIGH STANDARD INSTALLATION

Matki Installations is Matki's in-house team of installation engineers. Operating throughout the UK, they are expert at fitting EauZone Shower Doors and Screens whether standard or bespoke. Please find more information on page 43.



## A STRONG FOUNDATION

Designed by Matki and made at our Shower Tray Facility in Cornwall, Matki Shower Trays and Floors are the ideal foundation for EauZone. A wide range of shapes, sizes, profiles and colours can be found in the Shower Tray pages 74 – 83.

## INSTALLATION

EauZone Hinged Doors can be installed on a Shower Tray, Shower Floor or directly onto a tiled Wet Room Floor.



EPC – EAUZONE HINGED DOOR FOR CORNER

EPR – EAUZONE HINGED DOOR FOR RECESS; POLISHED NICKEL













## EAUZONE RADIUS - 20

In a class of its own, the EauZone Hinge Panel and Door with Radius-20 Side Panel represents the pinnacle of frameless shower design. The visual allure of the expertly curved Radius-20 Side Panel combined with the refined proportions and steadfast reliability of the EauZone Hinged Door design achieves a synthesis with its own distinct character and unique elegance.

Available with or without a Hinge Panel in sizes from 900 up to 1600. Please see pages 60 and 61 for more details on Sizes, Prices and Specification.



EWCL900 + EWL900SP

EHCL – EAUZONE RADIUS-20 WITH HINGE PANEL FOR CORNER; POLISHED GOLD

## EAUZONE QUINTESSE

A true centrepiece. With a structured design and clean minimal lines, the EauZone Quintesse offers a unique solution to fitting a luxurious Corner Shower Enclosure. With its beautifully bevelled glass edges, the EauZone Quintesse Door closes perfectly to the panel with a satisfying finishing touch.

See page 62 for Sizes, Prices and Specification.

### QUINTESSE SHOWER TRAYS

Matki Quintesse Shower Trays (see page 83) are perfectly suited to the EauZone Quintesse, providing a stunning foundation for this unique showering space. EauZone Quintesse can also be installed onto bespoke Quintesse-shaped Matki Preference Floors (see page 81) or directly onto a tiled Wet Room Floor.













ABOVE: EPB - EAUZONE TWO PANEL BATH SCREEN

LEFT: EPD - EAUZONE DOUBLE PANEL BATH SCREEN; MATT BLACK

## E AUZONE BATH SCREENS

EauZone Bath Screens offer a luxurious **water-tight** solution for over-bath showering with single, two panel and folding options presented for flat top baths.

Built exclusively from robust **10mm thick safety glass**, which comes as standard with **Matki Glass Guard Easy Clean Protection**, they share a stylish aesthetic with excellent function.

See page 71 - 72 for Sizes, Prices and Specification.

### DOUBLE PANEL BATH SCREEN

The Double Panel Bath Screen offers an attractive, symmetrical look and has a convenient function with the hinged panel folding away when using the bath for bathing.

See page 73 for Sizes, Prices and Specification.



EPS - EAUZONE WALL HINGED BATH SCREEN

36. HANDLES

LINEAR (STANDARD)



SINGLE STRAIGHT



For Sliding and Curved Models

TRADITIONAL



CURVED



ENGINEER



ILLUSTRIOUS





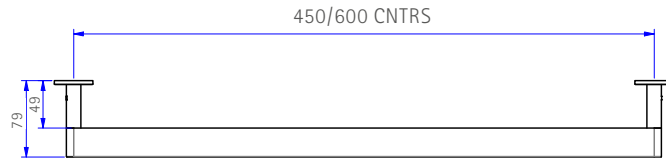
WALL TOWEL RAILS



WLTR600BB - Wall Linear Towel Rail in Brushed Brass



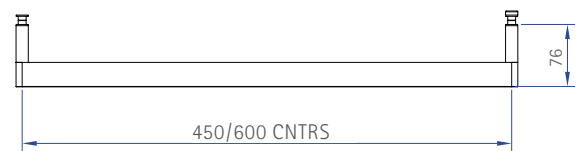
WLTR600BB - Wall Linear Towel Rail in Polished Nickel



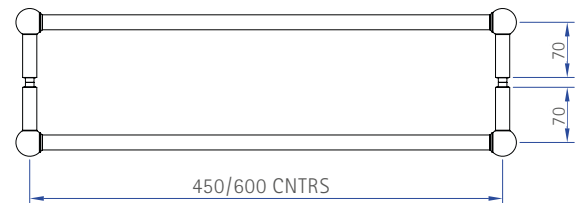
PANEL/DOOR TOWEL RAILS



LTR600BB - Linear Towel Rail in Brushed Brass



TTRDS600CP - Double-Sided Traditional Towel Rail in Polished Chrome



WALL TOWEL RAILS	£ EX. VAT	£ INC. VAT
WLTR450	£191.00	£229.20
WLTR600	£210.00	£252.00
PANEL/DOOR TOWEL RAILS	£ EX. VAT	£ INC. VAT
LTR450/TTR450	£169.00	£202.80
LTR600/TTR600	£224.00	£268.80
LTR450D	£185.00	£222.00
LTR600D	£281.00	£337.20
TTRDS450	£392.00	£470.40
TTRDS600	£392.00	£470.40

FINISHES	£ EX. VAT	£ INC. VAT
Ⓢ Polished Chrome - CP (Standard)	-	-
Ⓢ Polished Nickel - NP / Living Brass - LB	£39.00	£46.80
Ⓢ Brushed Nickel - NB / Brushed Brass - BB	£56.00	£67.20
Ⓢ Living Copper - LC / Polished Gold - MG	£69.00	£82.80
Ⓢ Aged Brass - AB / Black Chrome - XP	£76.00	£91.20
Ⓢ Brushed Gold -GB / Brushed Black Chrome - XB	£84.00	£100.80

## 38. SPECIAL FINISHES

ILLUSTRIOUS



ENGINEER



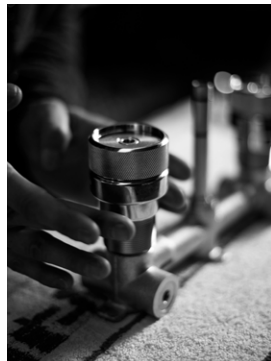
INVINCIBLE



ABSOLUTE



Part of Matki since the early 2000s, Swadling Brassware has four designer basin, bath and shower mixer collections and over 40 years of experience in plating and polishing special finishes.

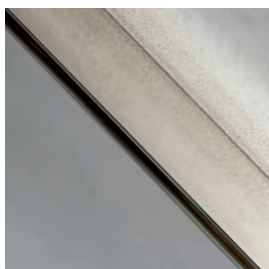


For a perfect match, Swadling Brassware and EauZone parts are plated in the same tanks, then beautifully finished by the same expert team.

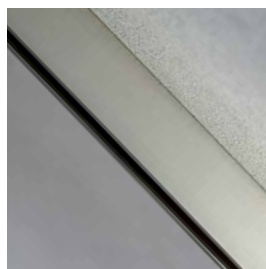
(S) POLISHED CHROME



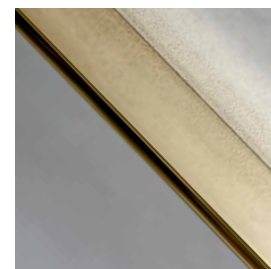
(S) POLISHED NICKEL



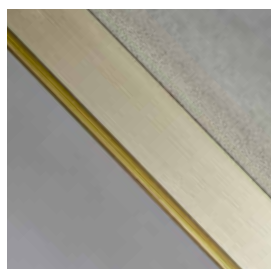
(S) BRUSHED NICKEL



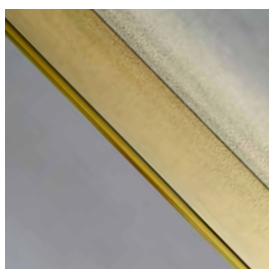
(S) POLISHED GOLD



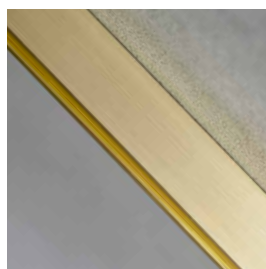
(S) BRUSHED GOLD



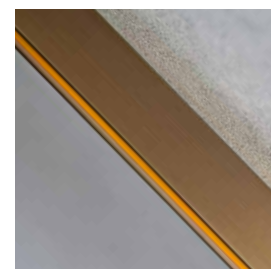
(S) LIVING BRASS\*



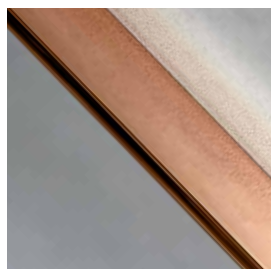
(S) BRUSHED BRASS\*



(S) AGED BRASS\*



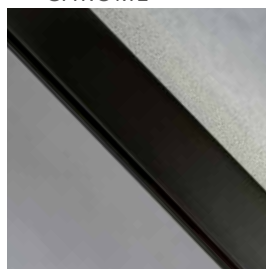
(S) LIVING COPPER\*



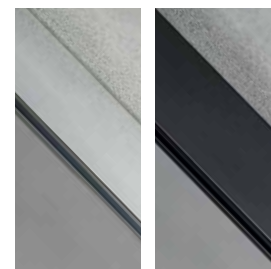
(S) BLACK CHROME



(S) BRUSHED BLACK CHROME



ALUMINIUM FINISHES



SILVER  
(STANDARD)

MATT BLACK

Finishes marked with an (S) will match perfectly across the product as they are applied purely to frames and fittings made exclusively from brass.

\*Living Finishes can however vary across and between parts and unless regularly maintained will oxidise over time in unpredictable ways.

(S) Swadling Brassware finishes are available to order for EauZone Wet Room Panel Models EWP, EWFP, EWMP, EWL, EWPH, and for all EauZone Hinged Door models.

Finishes not marked with an (S) use a combination of brass and aluminium material so will differ in colouration and texture between parts, please view samples.

## EAUZONE SLIDING AND CURVED ENCLOSURES

Models: EPSR, EPSC, EPSC-REV, EPST, ECS

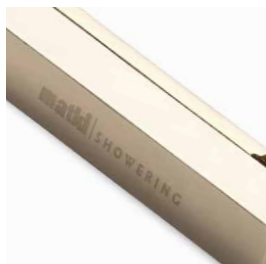
CHROME / POLISHED STEEL



BRUSHED STEEL



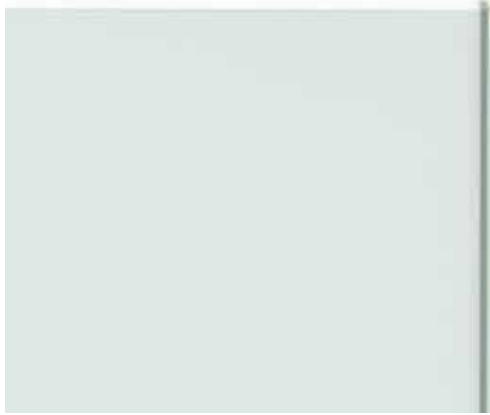
GOLD





40. GLASS FINISHES

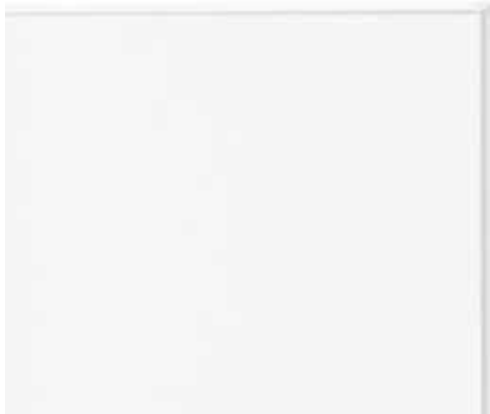
STANDARD CLEAR GLASS



BLUE TINTED GLASS



ULTRA CLEAR LOW IRON GLASS



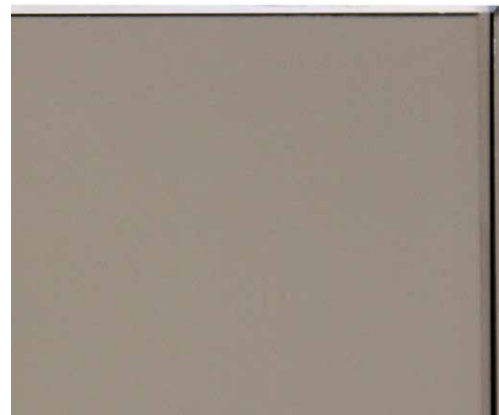
GREEN TINTED GLASS



FROSTED/SATIN GLASS



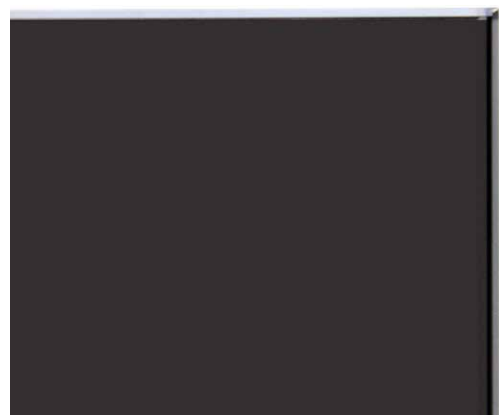
BRONZE TINTED GLASS



BLACK TINTED GLASS



ULTRA BLACK GLASS



STANDARD FRAME



28mm Profile  
 All finishes  
 Standard & Bespoke (BES)  
 Max. height 2.4m

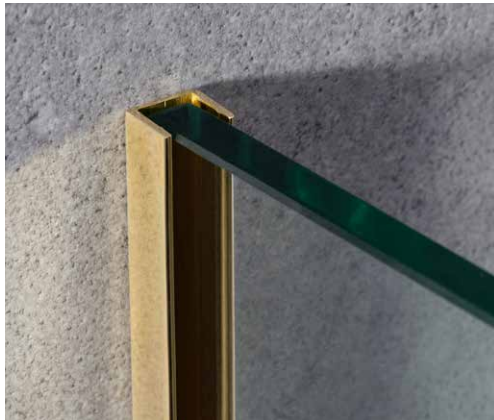
NEW! MEDIUM FRAME



17mm Profile  
 (S) finishes only  
 Standard & Bespoke (BES) option for select Wet Room Panels  
 Max. height 2.5m

ULTRA BESPOKE (ULTR) FRAMING

MINIMAL FRAME



11mm Profile  
 All finishes  
 Ultra Bespoke (ULTR)  
 Max. height 3m

COMPLETELY FRAMELESS



No frame  
 All finishes  
 Ultra Bespoke (ULTR)

Note on Ultra Bespoke Frame Types

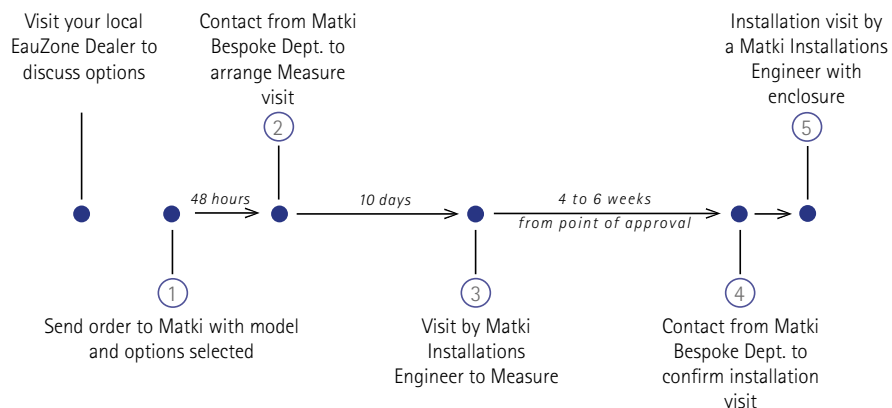
Ultra Bespoke Frames due to their narrow profile, allow for very little adjustment. To ensure a perfect fit every time, models with Minimal Frames and Completely Frameless models are measured and installed by Matki Installations. See page 43 for more details.

ULTRA BESPOKE (S) FINISHES FOR HINGED DOOR MODELS	£ EX. VAT	£ INC. VAT
Sliver/Chrome - SC (Standard)	-	-
Matt Black - MB	£524.00	£628.80
(S) Living Brass - LB	£448.00	£537.60
(S) Polished Chrome - CP / Brushed Brass - BB	£560.00	£672.00
(S) Polished Nickel - NP / Living Copper - LC	£776.00	£931.20
(S) Brushed Nickel - NB / Aged Brass - AB	£926.00	£1,111.20
(S) Polished Gold - MG / Black Chrome - XP	£952.00	£1,142.40
(S) Brushed Gold - GB / Brushed Black Chrome - XB	£1,119.00	£1,342.80



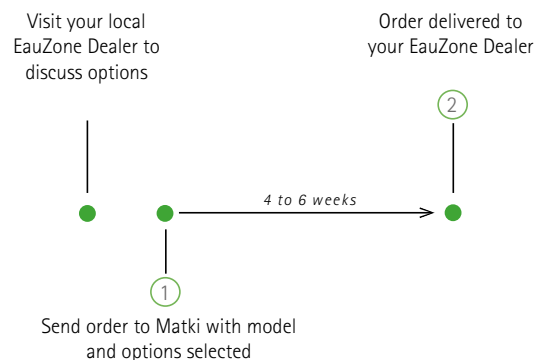
## 42. BESPOKE & ULTRA BESPOKE ORDER TIMELINES

### WITH MEASURE & INSTALLATION:



Lead times are currently longer than stated, please contact your EauZone Dealer for more information

### WITHOUT MEASURE & INSTALLATION:



#### PLEASE NOTE:

- All time periods stated are estimated and can vary dependent on customer approval
- For recessed channels - first fix channels delivered out prior to Measure to be fitted by your installer/tiler prior to tiling. Measure and Install service only
- Measure only and Install only options also available



For Bespoke (BES) and Ultra Bespoke (ULTR) pricing and options please see individual product pages 46 to 73.



Ensuring your EauZone is fitted perfectly, Matki Installations is a friendly and efficient in-house team operating throughout the United Kingdom and abroad. The following services are offered:

#### HIGH STANDARD INSTALLATION

This expert installation-only service can be ordered for all EauZone and EauZone Bespoke (BES) Shower Door, Wet Panel and Bath Screen products. To order, please add the Installation code (INST) as a suffix to your chosen EauZone or EauZone Bespoke (BES) model.

#### MEASURE & INSTALLATION

A prerequisite for EauZone Ultra Bespoke (ULTR) models due to the highly accurate measurements and more complex fitting required, Measure and Installation is also optional for EauZone and EauZone Bespoke (BES) models where you would like extra peace of mind.

The Matki Installations team will always clear away and recycle all packaging and leave your new showering area sparkling.

Please make sure you read the Matki Installations [Important Information](#) on the Matki website prior to ordering the service and that tiling is complete prior to the team's visit.

#### EXTENDED GUARANTEE

All Matki products installed by Matki Installations benefit from an extended 15 year guarantee with the initial 3 year period also having labour cost cover. Please register your guarantee on the Matki website with the details provided.

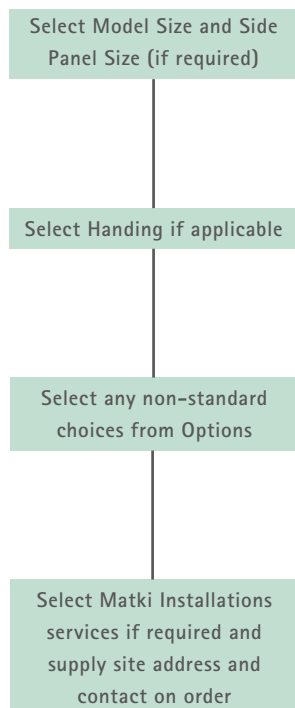
To book Matki Installations please contact our Bespoke Department on [eauzonebespoke@matki.co.uk](mailto:eauzonebespoke@matki.co.uk) or 01454 322888, or contact your nearest Matki EauZone Dealer.

For Matki Installations services outside the UK mainland, please contact Matki for pricing.

## 44. HOW TO ORDER

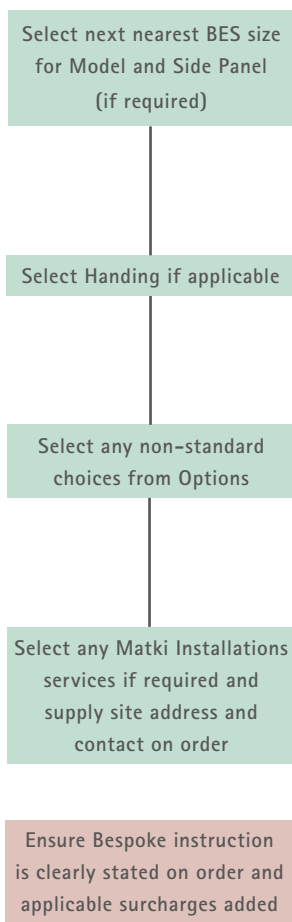
### EAUZONE

Choose Model and Options required adding suffixes and surcharges to the main model code and price



### EAUZONE BESPOKE

Choose from Bespoke (BES) Models for special widths and heights, adding suffixes to the Model BES codes and surcharges to price



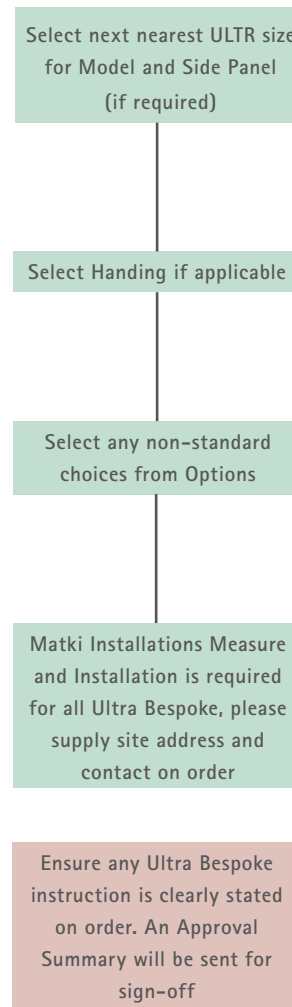
#### Important Information

Please note for bespoke height glass required to fit floor to ceiling use Ultra Bespoke as Glass Shaping and additional brackets may be required.

Width measurements supplied for Bespoke will be treated as midpoints of the adjustment ranges for the products selected.

### EAUZONE ULTRA BESPOKE

Choose from Ultra Bespoke (ULTR) codes for Minimal and Recessed Frames and Completely Frameless, and for any Glass Shaping, adding suffixes to the Model ULTR codes and surcharges to price



#### Important Information

Please note prices can change up to point of Approval Summary sign-off

If you are unsure of the details, you can order a Measure with Matki Installations at £242 ex VAT and request on order for Matki Installations to help you specify model type and any bespoke required.







HOW TO ORDER

- Select CORNER DOOR model and SIDE PANEL model from tables below
- Make choices from OPTIONS table, adding suffix codes to EPSC CORNER DOOR code and surcharges to CORNER DOOR price; standard options will be supplied unless otherwise specified
- Bespoke (BES) CORNER DOOR and SIDE PANEL sizes are listed, please see the BESPOKE OPTIONS table and page 44 for more information. Ultra Bespoke (ULTR) available for SIDE PANEL only

DIMENSIONS (MM)				PRICES		
CORNER DOOR	A	B	C	D	£ EX. VAT	£ INC. VAT
EPSC1100	1072-1087	430	56	477-497	£1,673.00	£2,007.60
EPSC1125	1097-1112	430	81	477-497	£1,673.00	£2,007.60
EPSC1150	1122-1137	430	106	477-497	£1,673.00	£2,007.60
EPSC1175	1147-1162	430	131	477-497	£1,673.00	£2,007.60
EPSC1200	1172-1187	465	56	523-543	£1,673.00	£2,007.60
EPSC1225	1197-1212	465	81	523-543	£1,907.00	£2,288.40
EPSC1250	1222-1237	465	106	523-543	£1,907.00	£2,288.40
EPSC1275	1247-1262	465	131	523-543	£1,907.00	£2,288.40
EPSC1300	1272-1287	465	156	523-543	£1,907.00	£2,288.40
EPSC1325	1297-1312	465	181	523-543	£1,914.00	£2,296.80
EPSC1350	1322-1337	465	206	523-543	£1,914.00	£2,296.80
EPSC1375	1347-1362	465	231	523-543	£1,914.00	£2,296.80
EPSC1400	1372-1387	465	256	523-543	£1,914.00	£2,296.80
EPSC1400BES	Up to 1387mm	465	-	-	£2,208.00	£2,649.60
EPSC1425	1397-1412	465	281	523-543	£1,930.00	£2,316.00
EPSC1450	1422-1437	465	306	523-543	£1,930.00	£2,316.00
EPSC1475	1447-1462	465	331	523-543	£1,930.00	£2,316.00
EPSC1500	1472-1487	610	56	678-693	£1,930.00	£2,316.00
EPSC1525	1497-1512	610	81	678-693	£1,999.00	£2,398.80
EPSC1550	1522-1537	610	106	678-693	£1,999.00	£2,398.80
EPSC1575	1547-1562	610	131	678-693	£1,999.00	£2,398.80
EPSC1600	1572-1587	610	156	678-693	£1,999.00	£2,398.80
EPSC1625	1597-1612	610	181	678-693	£2,094.00	£2,512.80
EPSC1650	1622-1637	610	206	678-693	£2,094.00	£2,512.80
EPSC1675	1647-1662	610	231	678-693	£2,094.00	£2,512.80
EPSC1700	1672-1687	610	256	678-693	£2,094.00	£2,512.80
EPSC1725	1697-1712	610	281	678-693	£2,171.00	£2,605.20
EPSC1750	1722-1737	610	306	678-693	£2,171.00	£2,605.20
EPSC1775	1747-1762	610	331	678-693	£2,171.00	£2,605.20
EPSC1800	1772-1787	610	356	678-693	£2,171.00	£2,605.20
EPSC1800BES	Up to 1787mm	610	-	-	£2,548.00	£3,057.60

SIDE PANEL	E	£ EX. VAT	£ INC. VAT
EPSC700SP	671 - 686	£514.00	£616.80
EPSC760SP	731 - 746	£552.00	£662.40
EPSC800SP	771 - 786	£591.00	£709.20
EPSC800SPBES	Up to 800mm	£899.00	£1,078.80
EPSC800SPULTR	Up to 800mm	£1,074.00	£1,288.80
EPSC900SP	871 - 886	£668.00	£801.60
EPSC1000SP	971 - 986	£760.00	£912.00
EPSC1000SPBES	Up to 1000mm	£1,140.00	£1,368.00
EPSC1000SPULTR	Up to 1000mm	£1,317.00	£1,584.00



MATKI INSTALLATIONS	CODE	£ EX. VAT	£ INC. VAT
Measure	MS	£242.00	£290.40
Installation - Standard or Bespoke	INST	£785.00	£942.00
Measure and Installation	MSINST	£1,027.00	£1,232.40

See page 43. Measure is optional for Standard and Bespoke (BES) models but required for Ultra Bespoke (ULTR). Product and Installation prices may change after measure. For areas outside the UK mainland, please contact Matki for pricing. Please contact Matki for installation prices at heights above 2200mm.

OPTIONS

HANDING	
Left Hand Corner - LH	Right Hand Corner - RH

HANDLES	
Linear - LNR (Standard)	Traditional - TRAD
Curved - CRV	Single Straight - SGL

FRAME FINISHES	£ EX. VAT	£ INC. VAT
Chrome/Mirror-Polished Stainless Steel - SC (Standard)	-	-
Brushed Steel - ST	£524.00	£628.80
Gold - SG	£524.00	£628.80

BESPOKE (BES) & ULTRA BESPOKE (ULTR) OPTIONS	BES	ULTR
	Add Surcharges to BES/ULTR Prices	
Width changes up to dimensions listed	✓	✓
Width changes above max dimensions <sup>1</sup>	Add £190 per 100mm (Side Panel £132 ex VAT)	Add £132 per 100mm ex VAT
Reduced height <sup>2</sup>	✓	✓
Increased height per panel/door <sup>2</sup>	Add £138 ex VAT per 100mm	
Glass Shaping: e.g. Angles, Cut Outs <sup>3</sup>	✗	✓
Circular Hole Handle	Add £115 ex VAT	N/A
<b>All Glass finish prices refer to whole product EPSC + SP</b>		
Tinted / Low Iron Glass Finish <sup>4</sup> (see page 40)	Add £863 ex VAT	
Satin/Frosted Glass Finish <sup>4</sup>	Add £966 ex VAT	
Ultra Black Glass Finish <sup>4</sup>	Add £1,472 ex VAT	

<sup>1</sup> Max CORNER DOOR 2500mm wide.

<sup>2</sup> Height changes only available for CORNER models with C Panel 181 size and upwards. Reduced Height options on models with C Panel below 181 at 1800, 1850, 1900 and 1950mm high. Other height changes for Models 1500 to 1625 available but with smaller 465 door size.

<sup>3</sup> Only available on SIDE PANEL and require Measure and Installation.

<sup>4</sup> Special glass finishes only available for CORNER DOOR models with C Panel 181 size and upwards. Special glass finishes for Models 1500 to 1625 available but with smaller 465 door size.



## 48. EPSCREV: REVERSE SLIDING DOOR WITH FIXED PANELS FOR CORNER

### HOW TO ORDER

- Select REVERSE CORNER DOOR model and SIDE PANEL model from tables below
- Make choices from OPTIONS table, adding suffix codes to REVERSE CORNER DOOR code and surcharges to REVERSE CORNER DOOR price; standard options will be supplied unless otherwise specified
- Bespoke (BES) REVERSE CORNER DOOR and SIDE PANEL sizes are listed, please see the BESPOKE OPTIONS table and page 44 for more information. Ultra Bespoke (ULTR) available for SIDE PANEL only

DIMENSIONS (MM)				PRICES		
REVERSE CORNER DOOR	A	B	C	D	£ EX. VAT	£ INC. VAT
EPSCREV1100	1072-1087	430	56	477-497	£1,673.00	£2,007.60
EPSCREV1125	1097-1112	430	81	477-497	£1,673.00	£2,007.60
EPSCREV1150	1122-1137	430	106	477-497	£1,673.00	£2,007.60
EPSCREV1175	1147-1162	430	131	477-497	£1,673.00	£2,007.60
EPSCREV1200	1172-1187	465	56	523-543	£1,673.00	£2,007.60
EPSCREV1225	1197-1212	465	81	523-543	£1,907.00	£2,288.40
EPSCREV1250	1222-1237	465	106	523-543	£1,907.00	£2,288.40
EPSCREV1275	1247-1262	465	131	523-543	£1,907.00	£2,288.40
EPSCREV1300	1272-1287	465	156	523-543	£1,907.00	£2,288.40
EPSCREV1325	1297-1312	465	181	523-543	£1,914.00	£2,296.80
EPSCREV1350	1322-1337	465	206	523-543	£1,914.00	£2,296.80
EPSCREV1375	1347-1362	465	231	523-543	£1,914.00	£2,296.80
EPSCREV1400	1372-1387	465	256	523-543	£1,914.00	£2,296.80
EPSCREV1400BES	Up to 1387mm	465	-	-	£2,208.00	£2,649.60
EPSCREV1425	1397-1412	465	281	523-543	£1,930.00	£2,316.00
EPSCREV1450	1422-1437	465	306	523-543	£1,930.00	£2,316.00
EPSCREV1475	1447-1462	465	331	523-543	£1,930.00	£2,316.00
EPSCREV1500	1472-1487	610	56	678-693	£1,930.00	£2,316.00
EPSCREV1525	1497-1512	610	81	678-693	£1,999.00	£2,398.80
EPSCREV1550	1522-1537	610	106	678-693	£1,999.00	£2,398.80
EPSCREV1575	1547-1562	610	131	678-693	£1,999.00	£2,398.80
EPSCREV1600	1572-1587	610	156	678-693	£1,999.00	£2,398.80
EPSCREV1625	1597-1612	610	181	678-693	£2,094.00	£2,512.80
EPSCREV1650	1622-1637	610	206	678-693	£2,094.00	£2,512.80
EPSCREV1675	1647-1662	610	231	678-693	£2,094.00	£2,512.80
EPSCREV1700	1672-1687	610	256	678-693	£2,094.00	£2,512.80
EPSCREV1725	1697-1712	610	281	678-693	£2,171.00	£2,605.20
EPSCREV1750	1722-1737	610	306	678-693	£2,171.00	£2,605.20
EPSCREV1775	1747-1762	610	331	678-693	£2,171.00	£2,605.20
EPSCREV1800	1772-1787	610	356	678-693	£2,171.00	£2,605.20
EPSCREV1800BES	Up to 1787mm	610	-	-	£2,548.00	£3,057.60
SIDE PANEL	E	£ EX. VAT	£ INC. VAT			
EPSCREV700SP	671 – 686	£514.00	£616.80			
EPSCREV760SP	731 – 746	£552.00	£662.40			
EPSCREV800SP	771 – 786	£591.00	£709.20			
EPSCREV800SPBES	Up to 800mm	£899.00	£1,078.80			
EPSCREV800SPULTR	Up to 800mm	£1,074.00	£1,288.80			
EPSCREV900SP	871 – 886	£668.00	£801.60			
EPSCREV1000SP	971 – 986	£760.00	£912.00			
EPSCREV1000BES	Up to 1000mm	£1,140.00	£1,368.00			
EPSCREV1000SPULTR	Up to 1000mm	£1,317.00	£1,580.40			



MATKI INSTALLATIONS	CODE	£ EX. VAT	£ INC. VAT
Measure	MS	£242.00	£290.40
Installation – Standard or Bespoke	INST	£785.00	£942.00
Measure and Installation	MSINST	£1,027.00	£1,232.40

See page 43. Measure is optional for Standard and Bespoke (BES) models but required for Ultra Bespoke (ULTR). Product and Installation prices may change after measure. For areas outside the UK mainland, please contact Matki for pricing. Please contact Matki for installation prices at heights above 2200mm.

### OPTIONS

HANDING			
Left Hand Corner – LH	Right Hand Corner – RH		
HANDLES			
Linear – LNR (Standard)	Traditional – TRAD		
Curved – CRV	Single Straight – SGL		
FRAME FINISHES		£ EX. VAT	£ INC. VAT
Chrome/Mirror-Polished Stainless Steel – SC (Standard)		-	-
Brushed Steel – ST		£524.00	£628.80
Gold – SG		£524.00	£628.80

BESPOKE (BES) & ULTRA BESPOKE (ULTR) OPTIONS	BES	ULTR (SIDE PANEL)
	Add Surcharges to BES/ULTR Prices	
Width changes up to to max dimensions listed	✓	✓
Width changes above max dimensions <sup>1</sup>	Add £190 per 100mm (Side Panel £132 ex VAT)	Add £132 per 100mm ex VAT
Reduced height <sup>2</sup>	✓	✓
Increased height per panel/door <sup>2</sup>	Add £138 per 100mm ex VAT	
Glass Shaping: e.g. Angles, Cut Outs <sup>3</sup>	✗	✓
Circular Hole Handle	Add £115 ex VAT	N/A
<b>All Glass finish prices refer to whole product EPSCREV + SP</b>		
Tinted / Low Iron Glass Finish <sup>4</sup> (see page 40)	Add £863 ex VAT	
Satin/Frosted Glass Finish <sup>4</sup>	Add £966 ex VAT	
Ultra Black Glass Finish <sup>4</sup>	Add £1,472 ex VAT	

<sup>1</sup> Max REVERSE CORNER DOOR 2500mm wide.

<sup>2</sup> Height changes only available for REVERSE CORNER DOOR models with C Panel 181 size and upwards. Reduced height options on models with C Panel below 181 at 1800, 1850, 1900 and 1950mm high. Other height changes for models 1500 to 1625 available but with smaller 465 door size.

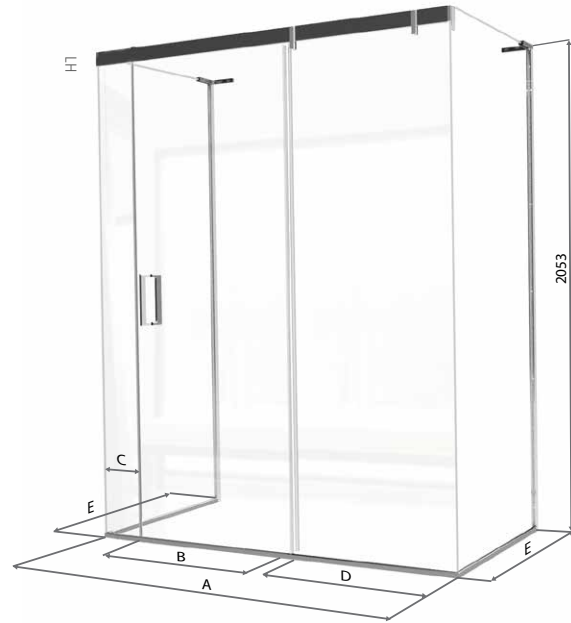
<sup>3</sup> Only available on SIDE PANEL and require Measure and Installation.

<sup>4</sup> Special glass finishes only available for REVERSE CORNER DOOR models with C Panel 181 size and upwards. Special glass finishes for models 1500 to 1625 available but with smaller 465 door size.

HOW TO ORDER

- Select THREE-SIDED DOOR model and SIDE PANEL models sizes then Options from table
- Make choices from OPTIONS table, adding suffix codes to THREE-SIDED DOOR price code and surcharges to THREE-SIDED DOOR price; standard options will be supplied unless otherwise specified
- Bespoke (BES) THREE-SIDED DOOR and SIDE PANEL sizes are listed, please see more information below and on page 44. Ultra Bespoke available for SIDE PANELS only

DIMENSIONS (MM)				PRICES		
THREE-SIDED DOOR	A	B	C	D	£ EX. VAT	£ INC. VAT
EPST1100	1090	430	55-70	477-497	£1,673.00	£2,007.60
EPST1125	1115	430	80-95	477-497	£1,673.00	£2,007.60
EPST1150	1140	430	105-120	477-497	£1,673.00	£2,007.60
EPST1175	1165	430	130-145	477-497	£1,673.00	£2,007.60
EPST1200	1190	465	55-70	523-543	£1,673.00	£2,007.60
EPST1225	1215	465	80-95	523-543	£1,907.00	£2,288.40
EPST1250	1240	465	105-120	523-543	£1,907.00	£2,288.40
EPST1275	1265	465	130-145	523-543	£1,907.00	£2,288.40
EPST1300	1290	465	155-170	523-543	£1,907.00	£2,288.40
EPST1325	1315	465	180-195	523-543	£1,914.00	£2,296.80
EPST1350	1340	465	205-220	523-543	£1,914.00	£2,296.80
EPST1375	1365	465	230-245	523-543	£1,914.00	£2,296.80
EPST1400	1390	465	255-270	523-543	£1,914.00	£2,296.80
EPST1400BES	Up to 1390mm	465	-	-	£2,208.00	£2,649.60
EPST1425	1415	465	280-295	523-543	£1,930.00	£2,316.00
EPST1450	1440	465	305-320	523-543	£1,930.00	£2,316.00
EPST1475	1465	465	330-345	523-543	£1,930.00	£2,316.00
EPST1500	1490	610	55-70	678-693	£1,930.00	£2,316.00
EPST1525	1515	610	80-95	678-693	£1,999.00	£2,398.80
EPST1550	1540	610	105-120	678-693	£1,999.00	£2,398.80
EPST1575	1565	610	130-145	678-693	£1,999.00	£2,398.80
EPST1600	1590	610	155-170	678-693	£1,999.00	£2,398.80
EPST1625	1615	610	180-195	678-693	£2,094.00	£2,512.80
EPST1650	1640	610	205-220	678-693	£2,094.00	£2,512.80
EPST1675	1665	610	230-245	678-693	£2,094.00	£2,512.80
EPST1700	1690	610	255-270	678-693	£2,094.00	£2,512.80
EPST1725	1715	610	280-295	678-693	£2,171.00	£2,605.20
EPST1750	1740	610	305-320	678-693	£2,171.00	£2,605.20
EPST1775	1765	610	330-345	678-693	£2,171.00	£2,605.20
EPST1800	1790	610	355-370	678-693	£2,171.00	£2,605.20
EPST1800BES	Up to 1790mm	610	-	-	£2,548.00	£3,057.60
SIDE PANEL (ADD 2)	E		£ EX. VAT	£ INC. VAT		
EPST700SP	671 - 686		£514.00	£616.80		
EPST760SP	731 - 746		£552.00	£662.40		
EPST800SP	771 - 786		£591.00	£709.20		
EPST800SPBES	Up to 800mm		£899.00	£1,078.80		
EPST800SPULTR	Up to 800mm		£1,074.00	£1,288.80		
EPST900SP	871 - 886		£668.00	£801.60		
EPST1000SP	971 - 986		£760.00	£912.00		
EPST1000SPBES	Up to 1000mm		£1,140.00	£1,368.00		
EPST1000SPULTR	Up to 1000mm		£1,317.00	£1,580.40		



MATKI INSTALLATIONS	CODE	£ EX. VAT	£ INC. VAT
Measure	MS	£242.00	£290.40
Installation - Standard or Bespoke	INST	£875.00	£1,050.00
Measure and Installation	MSINST	£1,117.00	£1,340.40

See page 43. Measure is optional for Standard and Bespoke (BES) models but required for Ultra Bespoke (ULTR). Product and Installation prices may change after measure. For areas outside the UK mainland, please contact Matki for pricing. Please contact Matki for installation prices at heights above 2200mm.

OPTIONS

HANDING	
Left Hand - LH	Right Hand - RH

HANDLES	
Linear - LNR (Standard)	Traditional - TRAD
Curved - CRV	Single Straight - SGL

FRAME FINISHES	£ EX. VAT	£ INC. VAT
Chrome/Mirror-Polished Stainless Steel - SC (Standard)	-	-
Brushed Steel - ST	£554.00	£664.80
Gold - SG	£554.00	£664.80

BESPOKE (BES) & ULTRA BESPOKE (ULTR) OPTIONS	BES	ULTR (SIDE PANEL)
	Add Surcharges to BES/ULTR Prices	
Width changes up to max dimensions listed	✓	✓
Width changes above max dimensions <sup>1</sup>	Add £190 per 100mm (Side Panel £132 ex VAT)	Add £132 per 100mm ex VAT
Reduced height <sup>2</sup>	✓	✓
Increased height per panel/door <sup>2</sup>	Add £138 per 100mm ex VAT	
Glass Shaping: e.g. Angles, Cut Outs <sup>3</sup>	✗	✓
Circular Hole Handle	Add £115 ex VAT	N/A
<b>All Glass finish prices refer to whole product EPST + 2 x SP</b>		
Tinted / Low Iron Glass Finish <sup>4</sup> (see page 40)	Add £1,035 ex VAT	
Satin/Frosted Glass Finish <sup>4</sup>	Add £1,173 ex VAT	
Ultra Black Glass Finish <sup>4</sup>	Add £1,880 ex VAT	

<sup>1</sup> Max THREE-SIDED DOOR 2500mm wide.

<sup>2</sup> Height changes only available for THREE-SIDED DOOR models with C Panel 181 size and upwards. Reduced Height options on models with C Panel below 181 at 1800, 1850, 1900 and 1950mm high. Other height changes for Models 1500 to 1625 available but with smaller 465 door size.

<sup>3</sup> Only available on SIDE PANELS and require Measure and Installation

<sup>4</sup> Special glass finishes only available for THREE-SIDED DOOR models with C Panel 181 size and upwards. Special glass finishes for Models 1500 to 1625 available but with smaller 465 door size.

## 50. ECS: CURVED CORNER

### HOW TO ORDER

- Select CURVED model from tables below, choosing with or without shower tray
- Make choices from OPTIONS table, adding suffix codes to CURVED or CURVED + TRAY code and surcharges to the model prices; standard options will be supplied unless otherwise specified
- Bespoke (BES) sizes are listed, please see the BESPOKE OPTIONS table and page 44 for more information

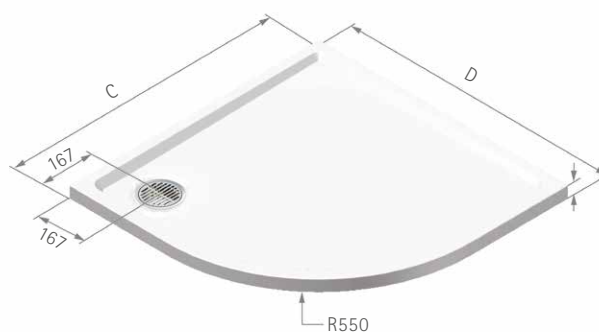
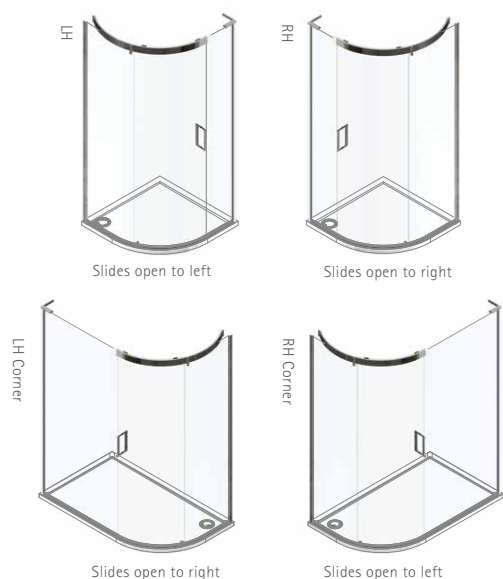
DIMENSIONS (MM)		PRICES		
CURVED	A	B	£ EX. VAT	£ INC. VAT
ECS900	876 - 890	325 - 340	£2,735.00	£3,282.00
ECS1290	1176 - 1190	625 - 640	£2,877.00	£3,452.40
ECS1590	1476 - 1490	925 - 940	£3,029.00	£3,634.80
ECS1590BES	Up to 1500mm		£3,521.00	£4,225.20
ECS2090BES	Up to 2000mm		£3,718.00	£4,461.60
CURVED + TRAY	C	D	£ EX. VAT	£ INC. VAT
ECS900T	900	900	£3,148.00	£3,777.60
ECS1290T	1200	900	£3,343.00	£4,011.60
ECS1590T	1500	900	£3,518.00	£4,221.60

Choose from CLC or ULC tray models on page 82, for standard sizes; MP and MF models on page 81 can be used for bespoke sizes. Waste for CLC and ULC trays is located in RH Corner for ECS1200T and ECS1500T models with LH corner handing, and in LH corner for all other models.

MATKI INSTALLATIONS	CODE	£ EX. VAT	£ INC. VAT
Measure	MS	£242.00	£290.40
Installation - Standard or Bespoke	INST	£695.00	£834.00
Measure and Installation	MSINST	£937.00	£1,124.40

See page 43. Measure is optional for Standard and Bespoke (BES) models but required for Glass Shaping. Product and Installation prices may change after measure. For areas outside the UK mainland, please contact Matki for pricing.

### CONFIGURATIONS & HANDING



### OPTIONS

HANDING			
ECS900, ECS900T	Left Hand - LH	Right Hand - RH	
ECS1290, ECS1590, ECS1290T, ECS1590T	Left Hand Corner - LH	Right Hand Corner - RH	
HANDLES			
Linear - LNR (Standard)	Traditional - TRAD		
Curved - CRV	Single Straight - SGL		
FRAME FINISHES		£ EX. VAT	£ INC. VAT
Chrome/Mirror-Polished Stainless Steel (Standard) - SC		-	-
Brushed Steel - ST		£524.00	£628.80
Gold - SG		£524.00	£628.80
BESPOKE (BES) & ULTRA BESPOKE (ULTR) OPTIONS		BES	
		Add Surcharges to BES Prices	
Panel B width changes up to max dimensions listed		✓	
Glass Shaping: e.g. Angles, Cut Outs <sup>1</sup>		Add £385 ex VAT	

<sup>1</sup> Only available on PANEL B and require Measure and Installation



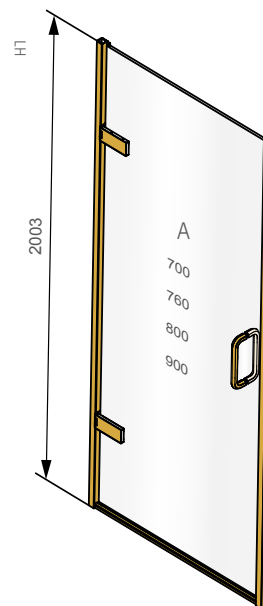
HOW TO ORDER

- Select RECESS model from table below
- Make choices from OPTIONS table, adding suffix codes to EPR RECESS code and surcharges to RECESS price; Standard options will be supplied unless otherwise specified
- Bespoke (BES) and Ultra Bespoke (ULTR) RECESS sizes are listed, please see the BESPOKE OPTIONS table and page 44 for more information

DIMENSIONS (MM)		PRICES	
RECESS	A	£ EX. VAT	£ INC. VAT
EPR700	670 - 700	£1,193.00	£1,431.60
EPR760	730 - 760	£1,210.00	£1,452.00
EPR760BES	Up to 760mm	£1,450.00	£1,740.00
EPR760ULTR	Up to 760mm	£1,525.00	£1,830.00
EPR800	770 - 800	£1,226.00	£1,471.20
EPR900	870 - 900	£1,257.00	£1,508.40
EPR900BES	Up to 900mm	£1,501.00	£1,801.20
EPR900ULTR	Up to 900mm	£1,555.00	£1,866.00

MATKI INSTALLATIONS	CODE	£ EX. VAT	£ INC. VAT
Measure	MS	£242.00	£290.40
Installation - Standard or Bespoke	INST	£514.00	£616.80
Measure and Installation	MSINST	£756.00	£907.20

See page 43. Measure is optional for Standard and Bespoke (BES) models but required for Ultra Bespoke (ULTR). Product and Installation prices may change after measure. For areas outside the UK mainland, please contact Matki for pricing. Please contact Matki for installation prices at heights above 2200mm.



OPTIONS

HANDING		DOOR OPENING	
Left Hand - LH	Right Hand - RH	Outwards (Standard)	Inwards - INW (Add £47 ex VAT)

HANDLES	
Linear - LNR (Standard)	Traditional - TRAD
Ⓢ Illustrious - IST	Ⓢ Engineer - ENG (Add £95 ex VAT)

FRAME ACCENTS	£ EX. VAT	£ INC. VAT
None (Standard)	-	-
EPR Frame Accent Pack - FVP*	£308.00	£369.60

\*Only available in Ⓢ finishes, not available on Inward Opening

FRAME FINISHES	£ EX. VAT	£ INC. VAT
Sliver/Chrome - SC (Standard)	-	-
Matt Black - MB	£524.00	£628.80
Ⓢ Living Brass - LB	£1,372.00	£1,646.40
Ⓢ Polished Chrome - CP / Brushed Brass - BB	£1,512.00	£1,814.40
Ⓢ Polished Nickel - NP / Living Copper - LC	£1,707.00	£2,048.40
Ⓢ Brushed Nickel - NB / Aged Brass - AB	£1,847.00	£2,216.40
Ⓢ Polished Gold - MG / Black Chrome - XP	£1,856.00	£2,227.20
Ⓢ Brushed Gold - GB / Brushed Black Chrome - XB	£1,989.00	£2,386.80

For Ⓢ Finish Surcharges on Ultra Bespoke Frames, please refer to page 41.

BESPOKE (BES) & ULTRA BESPOKE (ULTR) OPTIONS	BES	ULTR
	Add Surcharges to BES/ULTR Prices	
Width changes up to dimensions listed	✓	✓
Reduced height	✓	✓
Increased height per panel/door 1*	Add £86 per 100mm ex VAT	
Glass Shaping: e.g. Angles 2	✗	✓
Circular Hole Handle	Add £115 ex VAT	
Tinted / Low Iron Glass Finish (see page 40)	Add £178 ex VAT	
Satin/Frosted Glass Finish	Add £207 ex VAT	
Ultra Black Glass Finish	Add £414 ex VAT	
Ultra Bespoke Frames - see page 41 2*	✗	✓

1 Max 2.4 high with BES (standard frames), Max 3m with ULTR. Additional Hinge (£224 ex VAT) may be required.

2 Require Measure and Installation.

\* For special glass finishes in oversize dimensions, add 10% to Glass Finish surcharges for every 100mm of extra height or width above maximum standard size panels.

## 52. EPW: HINGE DOOR WITH INLINE PANEL FOR RECESS

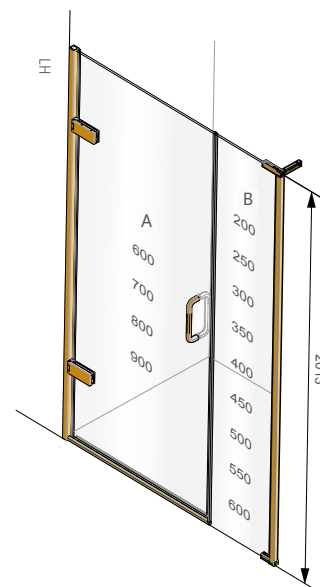
### HOW TO ORDER

- Select RECESS Model from table below
- Alternative standard door and panel combinations are available at the same price for each model size. The drawing opposite shows the standard panel sizes available
- Make choices from OPTIONS table, adding suffix codes to EPW RECESS code and surcharges to RECESS price; Standard options will be supplied unless otherwise specified
- Bespoke (BES) and Ultra Bespoke (ULTR) RECESS sizes are listed, please see the BESPOKE OPTIONS table and page 44 for more information

DIMENSIONS (MM)		PRICES			
RECESS	A + B	A	B	£ EX. VAT	£ INC. VAT
EPW800	770 – 800	600	200	£1,456.00	£1,747.20
EPW850	820 – 850	600	250	£1,470.00	£1,764.00
EPW900	870 – 900	700	200	£1,471.00	£1,765.20
EPW950	920 – 950	700	250	£1,485.00	£1,782.00
EPW1000	970 – 1000	800	200	£1,494.00	£1,792.80
EPW1000BES	Up to 1000mm			£1,939.00	£2,326.80
EPW1000ULTR	Up to 1000mm			£2,163.00	£2,595.60
EPW1050	1020 – 1050	800	250	£1,508.00	£1,809.60
EPW1100	1070 – 1100	900	200	£1,527.00	£1,832.40
EPW1150	1120 – 1150	900	250	£1,541.00	£1,849.20
EPW1200	1170 – 1200	700	500	£1,566.00	£1,879.20
EPW1250	1220 – 1250	800	450	£1,581.00	£1,897.20
EPW1300	1270 – 1300	900	400	£1,597.00	£1,916.40
EPW1300BES	Up to 1300mm			£2,101.00	£2,521.20
EPW1300ULTR	Up to 1300mm			£2,338.00	£2,805.60
EPW1350	1320 – 1350	900	450	£1,614.00	£1,936.80
EPW1400	1370 – 1400	900	500	£1,622.00	£1,946.40
EPW1450	1420 – 1450	900	550	£1,636.00	£1,963.20
EPW1500	1470 – 1500	900	600	£1,652.00	£1,982.40
EPW1500BES	Up to 1500mm			£2,156.00	£2,587.20
EPW1500ULTR	Up to 1500mm			£2,406.00	£2,887.20

MATKI INSTALLATIONS	CODE	£ EX. VAT	£ INC. VAT
Measure	MS	£242.00	£290.40
Installation - Standard or Bespoke	INST	£604.00	£724.80
Measure and Installation	MSINST	£846.00	£1,015.20

See page 43. Measure is optional for Standard and Bespoke (BES) models but required for Ultra Bespoke (ULTR). Product and Installation prices may change after measure. For areas outside the UK mainland, please contact Matki for pricing. Please contact Matki for installation prices at heights above 2200mm.



### OPTIONS

HANDLING	DOOR OPENING
Left Hand - LH    Right Hand - RH	Outwards (Standard)    Inwards - INW (Add £47 ex VAT)

HANDLES
Linear - LNR (Standard)    Traditional - TRAD
Ⓢ Illustrious - IST    Ⓢ Engineer - ENG (Add £95 ex VAT)

FRAME ACCENTS	£ EX. VAT	£ INC. VAT
None (Standard)	-	-
EPW Frame Accent Pack - FVP*	£308.00	£369.60

\*Only available in Ⓢ finishes, not available on Inward Opening

FRAME FINISHES	£ EX. VAT	£ INC. VAT
Sliver/Chrome - SC (Standard)	-	-
Matt Black - MB	£524.00	£628.80
Ⓢ Living Brass - LB	£756.00	£907.20
Ⓢ Polished Chrome - CP / Brushed Brass - BB	£896.00	£1,075.20
Ⓢ Polished Nickel - NP / Living Copper - LC	£1,102.00	£1,322.40
Ⓢ Brushed Nickel - NB / Aged Brass - AB	£1,247.00	£1,496.40
Ⓢ Polished Gold - MG / Black Chrome - XP	£1,264.00	£1,516.80
Ⓢ Brushed Gold - GB / Brushed Black Chrome - XB	£1,415.00	£1,698.00

For Ⓢ Finish Surcharges on Ultra Bespoke Frames, please refer to page 41.

BESPOKE (BES) & ULTRA BESPOKE (ULTR) OPTIONS	BES	ULTR
	Add Surcharges to BES/ULTR Prices	
Width changes up to dimensions listed	✓	✓
Width changes above max panel dims. listed <sup>1*</sup>	Add £115 per 100mm ex VAT	
Reduced height	✓	✓
Increased height per panel/door <sup>2*</sup>	Add £86 per 100mm ex VAT	
Glass Shaping: e.g. Angles, Cut Outs <sup>3</sup>	✗	✓
Circular Hole Handle	Add £115 ex VAT	
<b>All Glass finish prices refer to whole product EPW</b>		
Tinted / Low Iron Glass Finish (see page 40)	Add £242 ex VAT	
Satin/Frosted Glass Finish	Add £293 ex VAT	
Ultra Black Glass Finish	Add £541 ex VAT	
Ultra Bespoke Frames - see page 41 <sup>3</sup>	✗	✓

<sup>1</sup> B Panel only; always requires brace bar (add £141 ex VAT for SC and MB; £211 ex VAT for Ⓢ finishes) or ceiling bracket (add £100 ex VAT).

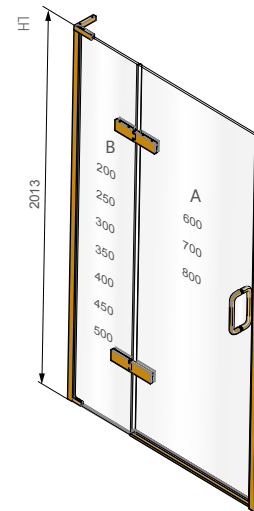
<sup>2</sup> Max 2.4 high with BES (standard frames), Max 3m with ULTR. Additional Hinge (£224 ex VAT) may be required.

<sup>3</sup> Require Measure and Installation

\* For special glass finishes in oversize dimensions, add 10% to Glass Finish surcharges for every 100mm of extra height and for every 100mm of extra width above maximum standard size product.

HOW TO ORDER

- Select RECESS Model from table below
- Alternative standard door and panel combinations are available at the same price for each model size. The drawing opposite shows the standard panel sizes available
- Make choices from OPTIONS table, adding suffix codes to EPH RECESS code and surcharges to RECESS price; Standard options will be supplied unless otherwise specified
- Bespoke (BES) and Ultra Bespoke (ULTR) RECESS sizes are listed, please see the BESPOKE OPTIONS table and page 44 for more information



DIMENSIONS (MM)			PRICES		
RECESS	A + B	A	B	£ EX. VAT	£ INC. VAT
EPH800	770 - 800	600	200	£1,731.00	£2,077.20
EPH850	820 - 850	600	250	£1,744.00	£2,092.80
EPH900	870 - 900	700	200	£1,745.00	£2,094.00
EPH950	920 - 950	700	250	£1,758.00	£2,109.60
EPH1000	970 - 1000	800	200	£1,775.00	£2,130.00
EPH1000BES	Up to 1000mm			£1,987.00	£2,384.40
EPH1000ULTR	Up to 1000mm			£2,208.00	£2,649.60
EPH1050	1020 - 1050	800	250	£1,788.00	£2,145.60
EPH1100	1070 - 1100	700	400	£1,804.00	£2,164.80
EPH1150	1120 - 1150	700	450	£1,823.00	£2,187.60
EPH1200	1170 - 1200	700	500	£1,837.00	£2,204.40
EPH1250	1220 - 1250	800	450	£1,853.00	£2,223.60
EPH1300	1270 - 1300	800	500	£1,867.00	£2,240.40
EPH1300BES	Up to 1300mm			£2,170.00	£2,604.00
EPH1300ULTR	Up to 1300mm			£2,383.00	£2,859.60

MATKI INSTALLATIONS	CODE	£ EX. VAT	£ INC. VAT
Measure	MS	£242.00	£290.40
Installation - Standard or Bespoke	INST	£604.00	£724.80
Measure and Installation	MSINST	£846.00	£1,015.20

See page 43. Measure is optional for Standard and Bespoke (BES) models but required for Ultra Bespoke (ULTR). Product and Installation prices may change after measure. For areas outside the UK mainland, please contact Matki for pricing. Please contact Matki for installation prices at heights above 2200mm.

OPTIONS

HANDING	DOOR OPENING
Left Hand - LH    Right Hand - RH	Outwards (Standard)

HANDLES
Linear - LNR (Standard)                      Traditional - TRAD
Ⓢ Illustrious - IST                                      Ⓢ Engineer - ENG (Add £95 ex VAT)

FRAME ACCENTS	£ EX. VAT	£ INC. VAT
None (Standard)	-	-
EPH Frame Accent Pack - FVP*	£577.00	£692.40

\*Only available in Ⓢ finishes below

FRAME FINISHES	£ EX. VAT	£ INC. VAT
Sliver/Chrome - SC (Standard)	-	-
Matt Black - MB	£524.00	£628.80
Ⓢ Living Brass - LB	£756.00	£907.20
Ⓢ Polished Chrome - CP / Brushed Brass - BB	£896.00	£1,075.20
Ⓢ Polished Nickel - NP / Living Copper - LC	£1,102.00	£1,322.40
Ⓢ Brushed Nickel - NB / Aged Brass - AB	£1,247.00	£1,496.40
Ⓢ Polished Gold - MG / Black Chrome - XP	£1,264.00	£1,516.80
Ⓢ Brushed Gold - GB / Brushed Black Chrome - XB	£1,415.00	£1,698.00

For Ⓢ Finish Surcharges on Ultra Bespoke Frames, please refer to page 41.

BESPOKE (BES) & ULTRA BESPOKE (ULTR) OPTIONS	BES	ULTR
	Add Surcharges to BES/ULTR Prices	
Width changes up to dimensions listed	✓	✓
Width changes above max panel dims. listed <sup>1*</sup>	Add £115 per 100mm ex VAT	
Reduced height	✓	✓
Increased height per panel/door <sup>2*</sup>	Add £86 per 100mm ex VAT	
Glass Shaping: e.g. Angles, Cut Outs <sup>3</sup>	✗	✓
Circular Hole Handle	Add £115 ex VAT	
<b>All Glass finish prices refer to whole product EPH</b>		
Tinted / Low Iron Glass Finish - see page 40	Add £224 ex VAT	
Satin/Frosted Glass Finish	Add £279 ex VAT	
Ultra Black Glass Finish	Add £506 ex VAT	
Ultra Bespoke Frames - see page 41 <sup>3</sup>	✗	✓

<sup>1</sup> B Panel only; always requires brace bar (add £141 ex VAT for SC and MB; £211 ex VAT for Ⓢ finishes) or ceiling bracket (add £100 ex VAT).

<sup>2</sup> Max 2.4 high with BES (standard frames), Max 3m with ULTR. Additional Hinge (£224 ex VAT) may be required.

<sup>3</sup> Require Measure and Installation.

\* For special glass finishes in oversize dimensions, add 10% to Glass Finish surcharges for every 100mm of extra height and for every 100mm of extra width above maximum standard size product.



## 54. EPI: HINGED DOOR WITH HINGE PANEL AND INLINE PANEL FOR RECESS

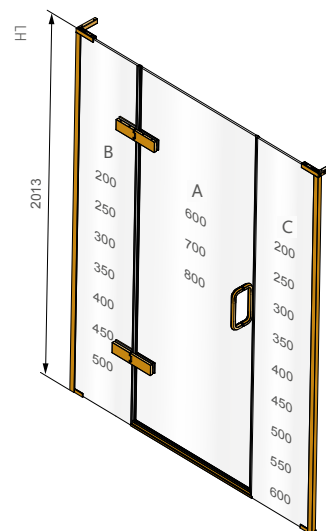
### HOW TO ORDER

- Select RECESS model from table below
- Alternative standard door and panel combinations are available at the same price for each model size. The drawing opposite shows the standard panel sizes available
- Make choices from OPTIONS table, adding suffix codes to EPI RECESS code and surcharges to RECESS price; Standard options will be supplied unless otherwise specified
- Bespoke (BES) and Ultra Bespoke (ULTR) RECESS sizes are listed, please see the BESPOKE OPTIONS table and page 44 for more information

DIMENSIONS (MM)				PRICES		
RECESS	A + B + C	A	B	C	£ EX. VAT	£ INC. VAT
EPI1000	970 - 1000	600	200	200	£1,967.00	£2,360.40
EPI1050	1020 - 1050	600	250	200	£1,980.00	£2,376.00
EPI1100	1070 - 1100	700	200	200	£1,987.00	£2,384.40
EPI1150	1120 - 1150	700	250	200	£2,000.00	£2,400.00
EPI1200	1170 - 1200	800	200	200	£2,018.00	£2,421.60
EPI1250	1220 - 1250	800	250	200	£2,031.00	£2,437.20
EPI1300	1270 - 1300	700	200	400	£2,050.00	£2,460.00
EPI1300BES	Up to 1300mm				£2,550.00	£3,060.00
EPI1300ULTR	Up to 1300mm				£2,898.00	£3,477.60
EPI1350	1320 - 1350	800	250	300	£2,061.00	£2,473.20
EPI1400	1370 - 1400	800	200	400	£2,081.00	£2,497.20
EPI1450	1420 - 1450	800	250	400	£2,094.00	£2,512.80
EPI1500	1470 - 1500	700	400	400	£2,109.00	£2,530.80
EPI1550	1520 - 1550	800	400	350	£2,126.00	£2,551.20
EPI1600	1570 - 1600	800	400	400	£2,140.00	£2,568.00
EPI1600BES	Up to 1600mm				£2,714.00	£3,256.80
EPI1600ULTR	Up to 1600mm				£3,138.00	£3,765.80
EPI1650	1620 - 1650	800	450	400	£2,159.00	£2,590.80
EPI1700	1670 - 1700	800	450	450	£2,173.00	£2,607.60
EPI1750	1720 - 1750	800	500	450	£2,178.00	£2,613.60
EPI1800	1770 - 1800	800	500	500	£2,202.00	£2,642.40
EPI1850	1820 - 1850	800	500	550	£2,213.00	£2,655.60
EPI1900	1870 - 1900	800	500	600	£2,226.00	£2,671.20
EPI1900BES	Up to 1900mm				£2,900.00	£3,480.00
EPI1900ULTR	Up to 1900mm				£3,311.00	£3,973.20

MATKI INSTALLATIONS	CODE	£ EX. VAT	£ INC. VAT
Measure	MS	£242.00	£290.40
Installation - Standard or Bespoke	INST	£695.00	£834.00
Measure and Installation	MSINST	£937.00	£1,124.40

See page 43. Measure is optional for Standard and Bespoke (BES) models but required for Ultra Bespoke (ULTR). Product and Installation prices may change after measure. For areas outside the UK mainland, please contact Matki for pricing. Please contact Matki for installation prices at heights above 2200mm.



### OPTIONS

HANDING		DOOR OPENING	
Left Hand - LH	Right Hand - RH	Outwards (Standard)	Inwards - INW
HANDLES			
Linear - LNR (Standard)		Traditional - TRAD	
Ⓢ Illustrious - IST		Ⓢ Engineer - ENG (Add £95 ex VAT)	
FRAME ACCENTS		£ EX. VAT	£ INC. VAT
None (Standard)		-	-
EPI Frame Accent Pack - FVP*		£577.00	£692.40
*Only available in Ⓢ finishes, not available on Inward Opening			
FRAME FINISHES		£ EX. VAT	£ INC. VAT
Sliver/Chrome - SC (Standard)		-	-
Matt Black - MB		£524.00	£628.80
Ⓢ Living Brass - LB		£448.00	£537.60
Ⓢ Polished Chrome - CP / Brushed Brass - BB		£560.00	£672.00
Ⓢ Polished Nickel - NP / Living Copper - LC		£776.00	£931.20
Ⓢ Brushed Nickel - NB / Aged Brass - AB		£926.00	£1,111.20
Ⓢ Polished Gold - MG / Black Chrome - XP		£952.00	£1,142.40
Ⓢ Brushed Gold - GB / Brushed Black Chrome - XB		£1,119.00	£1,342.80

BESPOKE (BES) & ULTRA BESPOKE (ULTR) OPTIONS	BES	ULTR
	Add Surcharges to BES/ULTR Prices	
Width changes up to dimensions listed	✓	✓
Width changes above max panel dims. listed <sup>1*</sup>	Add £115 per 100mm ex VAT	
Reduced height	✓	✓
Increased height per panel/door <sup>2*</sup>	Add £86 per 100mm ex VAT	
Glass Shaping: e.g. Angles, Cut Outs <sup>3</sup>	✗	✓
Circular Hole Handle	Add £115 ex VAT	
<b>All Glass finish prices refer to whole product EPI</b>		
Tinted / Low Iron Glass Finish - see page 40	Add £368 ex VAT	
Satin/Frosted Glass Finish	Add £431 ex VAT	
Ultra Black Glass Finish	Add £759 ex VAT	
Medium Frame - see page 41	✓	✓
Ultra Bespoke Frames - see page 41 <sup>3</sup>	✗	✓

<sup>1</sup> B/C Panels only; always requires brace bar (add £141 ex VAT for SC,MB; £211 ex VAT for Ⓢ finishes) or ceiling bracket (add £100 ex VAT)

<sup>2</sup> Max 2.4 high with BES (standard frames), Max 3m with ULTR. Additional Hinge (£224 ex VAT) may be required.

<sup>3</sup> Require Measure and Installation

\* For special glass finishes in oversize dimensions, add 10% to Glass Finish surcharges for every 100mm of extra height and for every 100mm of extra width above maximum standard size product.

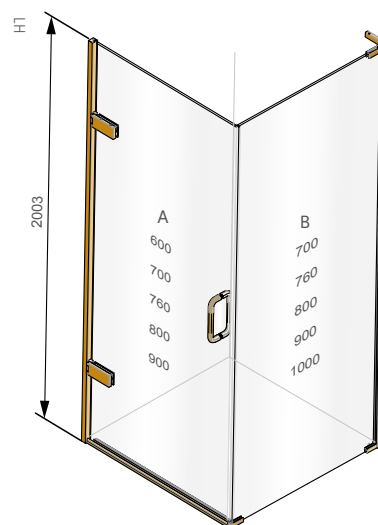
HOW TO ORDER

- Select CORNER DOOR and SIDE PANEL models from tables below
- Alternative standard door and panel combinations are available at the same price for each model size. The drawing opposite shows the standard panel sizes available
- Make choices from OPTIONS table, adding suffix codes to EPC CORNER DOOR code and surcharges to CORNER DOOR price; standard options will be supplied unless otherwise specified
- Bespoke (BES) and Ultra Bespoke (ULTR) CORNER DOOR and SIDE PANEL sizes are listed, please see the BESPOKE OPTIONS table and page 44 for more information

DIMENSIONS (MM)		PRICES	
<b>CORNER DOOR</b>	<b>A</b>	<b>£ EX. VAT</b>	<b>£ INC. VAT</b>
EPC600	569 - 584	£1,246.00	£1,495.20
EPC700	669 - 684	£1,261.00	£1,513.20
EPC760	729 - 744	£1,276.00	£1,531.20
EPC760BES	Up to 760mm	£1,536.00	£1,843.20
EPC760ULTR	Up to 760mm	£1,615.00	£1,938.00
EPC800	769 - 784	£1,286.00	£1,543.20
EPC900	869 - 884	£1,316.00	£1,579.20
EPC900BES	Up to 900mm	£1,542.00	£1,850.40
EPC900ULTR	Up to 900mm	£1,641.00	£1,969.20
<b>SIDE PANEL</b>	<b>B</b>	<b>£ EX. VAT</b>	<b>£ INC. VAT</b>
EPC700SP	670 - 685	£379.00	£454.80
EPC760SP	730 - 745	£384.00	£460.80
EPC800SP	770 - 785	£392.00	£470.40
EPC800SPBES	Up to 800mm	£771.00	£925.20
EPC800SPULTR	Up to 800mm	£1,020.00	£1,224.00
EPC900SP	870 - 885	£423.00	£507.60
EPC1000SP	970 - 985	£454.00	£544.80
EPC1000SPBES	Up to 1000mm	£818.00	£981.60
EPC1000SPULTR	Up to 1000mm	£1,142.00	£1,370.40

MATKI INSTALLATIONS	CODE	£ EX. VAT	£ INC. VAT
Measure	MS	£242.00	£290.40
Installation - Standard or Bespoke	INST	£604.00	£724.80
Measure and Installation	MSINST	£846.00	£1,015.20

See page 43. Measure is optional for Standard and Bespoke (BES) models but required for Ultra Bespoke (ULTR). Product and Installation prices may change after measure. For areas outside the UK mainland, please contact Matki for pricing. Please contact Matki for installation prices at heights above 2200mm.



OPTIONS

HANDING	DOOR OPENING	
Left Hand Corner - LH	Right Hand Corner - RH	Outwards (Standard)
HANDLES		
Linear - LNR (Standard)	Traditional - TRAD	
Ⓢ Illustrious - IST	Ⓢ Engineer - ENG (Add £95 ex VAT)	
FRAME ACCENTS	£ EX. VAT	£ INC. VAT
None (Standard)	-	-
EPC Frame Accent Pack - FVP*	£308.00	£369.60
*Only available in Ⓢ finishes		
FRAME FINISHES	£ EX. VAT	£ INC. VAT
Sliver/Chrome - SC (Standard)	-	-
Matt Black - MB	£524.00	£628.80
Ⓢ Living Brass - LB	£756.00	£907.20
Ⓢ Polished Chrome - CP / Brushed Brass - BB	£896.00	£1,075.20
Ⓢ Polished Nickel - NP / Living Copper - LC	£1,102.00	£1,322.40
Ⓢ Brushed Nickel - NB / Aged Brass - AB	£1,247.00	£1,496.40
Ⓢ Polished Gold - MG / Black Chrome - XP	£1,264.00	£1,516.80
Ⓢ Brushed Gold - GB / Brushed Black Chrome - XB	£1,415.00	£1,698.00
For Ⓢ Finish Surcharges on Ultra Bespoke Frames, please refer to page 41.		

BESPOKE (BES) & ULTRA BESPOKE (ULTR) OPTIONS	BES	ULTR
	Add Surcharges to BES/ULTR Prices	
Width changes up to dimensions listed	✓	✓
Width changes above max panel dims. listed <sup>1*</sup>	Add £115 per 100mm ex VAT	
Reduced height	✓	✓
Increased height per panel/door <sup>2*</sup>	Add £86 per 100mm ex VAT	
Glass Shaping: e.g. Angles, Cut Outs <sup>3</sup>	✗	✓
Circular Hole Handle	Add £115 ex VAT	
<b>All Glass finish prices refer to whole product EPC + SP</b>		
Tinted / Low Iron Glass Finish - see page 40	Add £368 ex VAT	
Satin/Frosted Glass Finish	Add £431 ex VAT	
Ultra Black Glass Finish	Add £759 ex VAT	
Ultra Bespoke Frames - see page 41 <sup>3</sup>	✗	✓

<sup>1</sup> B Panel only; always requires brace bar (add £141 ex VAT for SC,MB; £211 ex VAT for Ⓢ finishes) or ceiling bracket (add £100 ex VAT).

<sup>2</sup> Max 2.4m high with BES (standard frames), Max 3m with ULTR. Additional Hinge (£224 ex VAT) may be required.

<sup>3</sup> Require Measure and Installation.

\* For special glass finishes in oversize dimensions, add 10% to Glass Finish surcharges for every 100mm of extra height and width above maximum standard size panels.

## 56. EPWC: HINGED DOOR FROM WALL AND INLINE PANEL FOR CORNER

### HOW TO ORDER

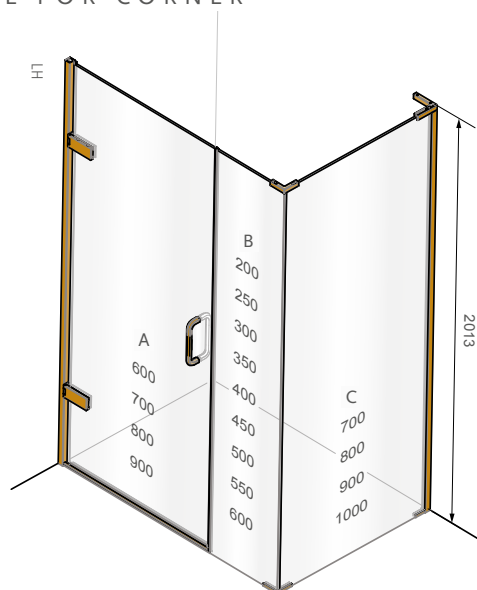
- Select CORNER DOOR and SIDE PANEL models from tables below
- Alternative standard door and panel combinations are available at the same price for each model size. The drawing opposite shows the standard panel sizes available
- Make choices from OPTIONS table, adding suffix codes to EPWC CORNER DOOR code and surcharges to CORNER DOOR price; standard options will be supplied unless otherwise specified
- Bespoke (BES) and Ultra Bespoke (ULTR) CORNER DOOR and SIDE PANEL sizes are listed, please see the BESPOKE OPTIONS table and page 44 for more information
- Also available on request with door hinged off inline panel (B), price on application

DIMENSIONS (MM)		PRICES			
CORNER DOOR	A + B	A	B	£ EX. VAT	£ INC. VAT
EPWC800	768 - 783	600	200	£1,567.00	£1,880.40
EPWC850	818 - 833	600	250	£1,581.00	£1,897.20
EPWC900	868 - 883	700	200	£1,582.00	£1,898.40
EPWC950	918 - 933	700	250	£1,596.00	£1,915.20
EPWC1000	968 - 983	800	200	£1,605.00	£1,926.00
EPWC1000BES	Up to 1000mm			£1,848.00	£2,217.60
EPWC1000ULTR	Up to 1000mm			£2,062.00	£2,474.40
EPWC1050	1018 - 1033	800	250	£1,619.00	£1,942.80
EPWC1100	1068 - 1083	900	200	£1,638.00	£1,965.60
EPWC1150	1118 - 1133	900	250	£1,652.00	£1,982.40
EPWC1200	1168 - 1183	800	400	£1,675.00	£2,010.00
EPWC1250	1218 - 1233	800	450	£1,692.00	£2,030.40
EPWC1300	1268 - 1283	900	400	£1,708.00	£2,049.60
EPWC1300BES	Up to 1300mm			£2,021.00	£2,425.20
EPWC1300ULTR	Up to 1300mm			£2,249.00	£2,698.80
EPWC1350	1318 - 1333	900	450	£1,725.00	£2,070.00
EPWC1400	1368 - 1383	900	500	£1,733.00	£2,079.60
EPWC1450	1418 - 1433	900	550	£1,747.00	£2,096.40
EPWC1500	1468 - 1483	900	600	£1,763.00	£2,115.60
EPWC1500BES	Up to 1500mm			£2,041.00	£2,449.20
EPWC1500ULTR	Up to 1500mm			£2,297.00	£2,756.40

SIDE PANEL	C	£ EX. VAT	£ INC. VAT
EPWC700SP	666 - 681	£386.00	£463.20
EPWC760SP	726 - 741	£392.00	£470.40
EPWC800SP	766 - 781	£399.00	£478.80
EPWC800SPBES	Up to 800mm	£840.00	£1,008.00
EPWC800SPULTR	Up to 800mm	£1,141.00	£1,369.20
EPWC900SP	866 - 881	£430.00	£516.00
EPWC1000SP	966 - 981	£459.00	£550.80
EPWC1000SPBES	Up to 1000mm	£938.00	£1,125.60
EPWC1000SPULTR	Up to 1000mm	£1,254.00	£1,504.80

MATKI INSTALLATIONS	CODE	£ EX. VAT	£ INC. VAT
Measure	MS	£242.00	£290.40
Installation - Standard or Bespoke	INST	£695.00	£834.00
Measure and Installation	MSINST	£937.00	£1,124.40

See page 43. Measure is optional for Standard and Bespoke (BES) models but required for Ultra Bespoke (ULTR). Product and Installation prices may change after measure. For areas outside the UK mainland, please contact Matki for pricing. Please contact Matki for installation prices at heights above 2200mm.



### OPTIONS

#### HANDING

Left Hand Corner - LH Right Hand Corner - RH Outwards (Standard) Inwards - INW (Add £47 ex VAT)

#### DOOR OPENING

#### HANDLES

Linear - LNR (Standard) Traditional - TRAD  
 (S) Illustrious - IST (S) Engineer - ENG (Add £95 ex VAT)

#### FRAME ACCENTS

	£ EX. VAT	£ INC. VAT
None (Standard)	-	-
EPWC Frame Accent Pack - FVP*	£577.00	£692.40

\*Only available in (S) finishes, not available on Inward Opening

#### FRAME FINISHES

	£ EX. VAT	£ INC. VAT
Sliver/Chrome - SC (Standard)	-	-
Matt Black - MB	£524.00	£628.80
(S) Living Brass - LB	£756.00	£907.20
(S) Polished Chrome - CP / Brushed Brass - BB	£896.00	£1,075.20
(S) Polished Nickel - NP / Living Copper - LC	£1,102.00	£1,322.40
(S) Brushed Nickel - NB / Aged Brass - AB	£1,247.00	£1,496.40
(S) Polished Gold - MG / Black Chrome - XP	£1,264.00	£1,516.80
(S) Brushed Gold - GB / Brushed Black Chrome - XB	£1,415.00	£1,698.00

For (S) Finish Surcharges on Ultra Bespoke Frames, please refer to page 41.

#### BESPOKE (BES) & ULTRA BESPOKE (ULTR) OPTIONS

	BES	ULTR
Add Surcharges to BES/ULTR Prices		
Width changes up to dimensions listed	✓	✓
Width changes above max panel dims. listed <sup>1*</sup>	Add £115 per 100mm ex VAT	
Reduced height	✓	✓
Increased height per panel/door <sup>2*</sup>	Add £86 per 100mm ex VAT	
Glass Shaping: e.g. Angles, Cut Outs <sup>3</sup>	✗	✓
Circular Hole Handle	Add £115 ex VAT	
All Glass finish prices refer to whole product EPWC + SP		
Tinted / Low Iron Glass Finish - see page 40	Add £403 ex VAT	
Satin/Frosted Glass Finish	Add £506 ex VAT	
Ultra Black Glass Finish	Add £909 ex VAT	
Ultra Bespoke Frames - see page 41 <sup>3</sup>	✗	✓

<sup>1</sup> B/C Panels only; always requires brace bar (add £141 ex VAT for SC,MB; £211 ex VAT for (S) finishes) or ceiling bracket (add £100 ex VAT).

<sup>2</sup> Max 2.4 high with BES (standard frames), Max 3m with ULTR. Additional Hinge (£224 ex VAT) may be required.

<sup>3</sup> Require Measure and Installation.

\* For special glass finishes in oversize dimensions, add 10% to Glass Finish surcharges for every 100mm of extra height and for every 100mm of extra width above maximum standard size product.





## 58. EPIC: EAUZONE HINGED DOOR WITH HINGE PANEL AND INLINE PANEL FOR CORNER

### HOW TO ORDER

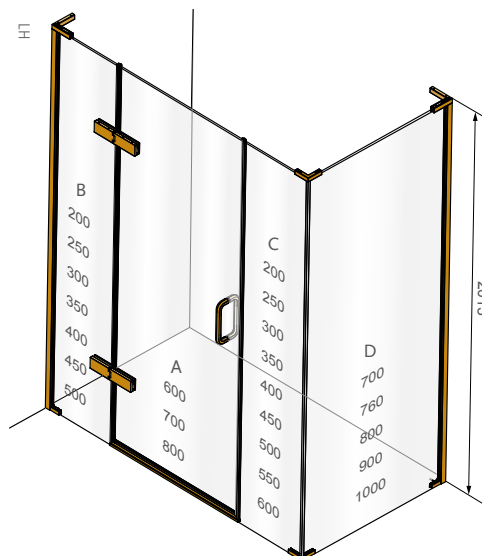
- Select CORNER DOOR and SIDE PANEL models from tables below
- Alternative standard door and panel combinations are available at the same price for each model size. The drawing opposite shows the standard panel sizes available
- Make choices from OPTIONS table, adding suffix codes to EPIC CORNER DOOR code and surcharges to CORNER DOOR price; standard options will be supplied unless otherwise specified
- Bespoke (BES) and Ultra Bespoke (ULTR) CORNER DOOR and SIDE PANEL sizes are listed, please see the BESPOKE OPTIONS table and page 44 for more information

DIMENSIONS (MM)		PRICES				
DOOR	A + B + C	A	B	C	£ EX. VAT	£ INC. VAT
EPIC1000	969 - 984	600	200	200	£2,104.00	£2,524.80
EPIC1050	1019 - 1034	600	250	200	£2,117.00	£2,540.40
EPIC1100	1069 - 1084	700	200	200	£2,124.00	£2,548.80
EPIC1150	1119 - 1134	700	250	200	£2,137.00	£2,564.40
EPIC1200	1169 - 1184	800	200	200	£2,155.00	£2,586.00
EPIC1250	1219 - 1234	800	250	200	£2,168.00	£2,601.60
EPIC1300	1269 - 1284	700	200	400	£2,187.00	£2,624.40
EPIC1300BES	Up to 1300mm				£2,574.00	£3,088.80
EPIC1300ULTR	Up to 1300mm				£3,075.00	£3,690.00
EPIC1350	1319 - 1334	800	300	250	£2,200.00	£2,640.00
EPIC1400	1369 - 1384	800	200	400	£2,218.00	£2,661.60
EPIC1450	1419 - 1434	800	300	350	£2,232.00	£2,678.40
EPIC1500	1469 - 1484	700	400	400	£2,246.00	£2,695.20
EPIC1550	1519 - 1534	800	350	400	£2,265.00	£2,718.00
EPIC1600	1569 - 1584	800	400	400	£2,277.00	£2,732.40
EPIC1600BES	Up to 1600mm				£2,745.00	£3,294.00
EPIC1600ULTR	Up to 1600mm				£3,261.00	£3,913.20
EPIC1650	1619 - 1634	800	400	450	£2,291.00	£2,749.20
EPIC1700	1669 - 1684	800	450	450	£2,310.00	£2,772.00
EPIC1750	1719 - 1734	800	500	450	£2,315.00	£2,778.00
EPIC1800	1769 - 1784	800	500	500	£2,339.00	£2,806.80
EPIC1850	1819 - 1834	800	500	550	£2,350.00	£2,820.00
EPIC1900	1869 - 1884	800	500	600	£2,363.00	£2,835.60
EPIC1900BES	Up to 1900mm				£2,915.00	£3,498.00
EPIC1900ULTR	Up to 1900mm				£3,445.00	£4,134.00

SIDE PANEL	D	£ EX. VAT	£ INC. VAT
EPIC700SP	666 - 681	£386.00	£463.20
EPIC760SP	726 - 741	£392.00	£470.40
EPIC800SP	766 - 781	£399.00	£478.80
EPIC800SPBES	Up to 800mm	£840.00	£1,008.00
EPIC800SPULTR	Up to 800mm	£1,141.00	£1,369.20
EPIC900SP	866 - 881	£430.00	£516.00
EPIC1000SP	966 - 981	£459.00	£550.80
EPIC1000SPBES	Up to 1000mm	£938.00	£1,125.60
EPIC1000SPULTR	Up to 1000mm	£1,254.00	£1,504.80

MATKI INSTALLATIONS	CODE	£ EX. VAT	£ INC. VAT
Measure	MS	£242.00	£290.40
Installation - Standard or Bespoke	INST	£785.00	£942.00
Measure and Installation	MSINST	£1,027.00	£1,232.40

See page 43. Measure is optional for Standard and Bespoke (BES) models but required for Ultra Bespoke (ULTR). Product and Installation prices may change after measure. For areas outside the UK mainland, please contact Matki for pricing. Please contact Matki for installation prices at heights above 2200mm.



### OPTIONS

HANDING	DOOR OPENING	
Left Hand Corner - LH	Right Hand Corner - RH	Outwards (Standard) Inwards - INW
HANDLES		
Linear - LNR (Standard)	Traditional - TRAD	
Ⓢ Illustrious - IST	Ⓢ Engineer - ENG (Add £95 ex VAT)	
FRAME ACCENTS	£ EX. VAT	£ INC. VAT
None (Standard)	-	-
EPIC Frame Accent Pack - FVP*	£846.00	£1,015.20
*Only available in Ⓢ finishes, not available on Inward Opening		
FRAME FINISHES	£ EX. VAT	£ INC. VAT
Sliver/Chrome - SC (Standard)	-	-
Matt Black - MB	£524.00	£628.80
Ⓢ Living Brass - LB	£448.00	£537.60
Ⓢ Polished Chrome - CP / Brushed Brass - BB	£560.00	£672.00
Ⓢ Polished Nickel - NP / Living Copper - LC	£776.00	£931.20
Ⓢ Brushed Nickel - NB / Aged Brass - AB	£926.00	£1,111.20
Ⓢ Polished Gold - MG / Black Chrome - XP	£952.00	£1,142.40
Ⓢ Brushed Gold - GB / Brushed Black Chrome - XB	£1,119.00	£1,342.80

BESPOKE (BES) & ULTRA BESPOKE (ULTR) OPTIONS	BES	ULTR
Add Surcharges to BES/ULTR Prices		
Width changes up to dimensions listed	✓	✓
Width changes above max panel dims. listed <sup>1*</sup>	Add £115 per 100mm ex VAT	
Reduced height	✓	✓
Increased height per panel/door <sup>2*</sup>	Add £86 per 100mm ex VAT	
Glass Shaping: e.g. Angles, Cut Outs <sup>3</sup>	✗	✓
Circular Hole Handle	Add £115 ex VAT	
<b>All Glass finish prices refer to whole product EPIC + SP</b>		
Tinted / Low Iron Glass Finish - see page 40	Add £472 ex VAT	
Satin/Frosted Glass Finish	Add £569 ex VAT	
Ultra Black Glass Finish	Add £1,081 ex VAT	
Medium Frame - see page 41	✓	✓
Ultra Bespoke Frames - see page 41 <sup>3</sup>	✗	✓

<sup>1</sup> B/C/D Panels only; always requires brace bar (add £141 ex VAT for SC,MB; £211 ex VAT for Ⓢ finishes) or ceiling bracket (add £100 ex VAT).

<sup>2</sup> Max 2.4m high with BES (standard frames), Max 3m with ULTR. Additional Hinge (£224 ex VAT) may be required.

<sup>3</sup> Require Measure and Installation.

\* For special glass finishes in oversize dimensions, add 10% to Glass Finish surcharges for every 100mm of extra height and for every 100mm of extra width above maximum standard size product.

HOW TO ORDER

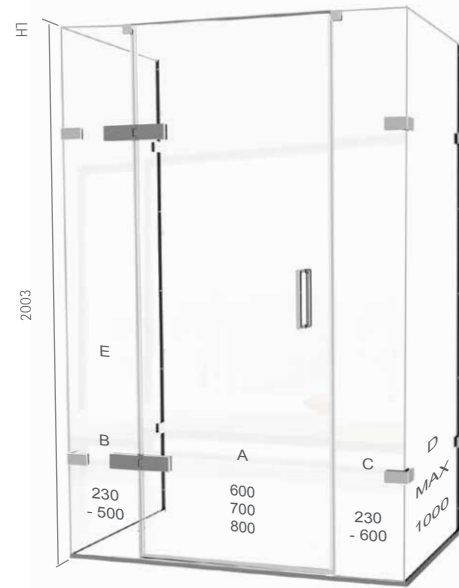
- Select Bespoke THREE-SIDED DOOR and SIDE PANEL models from tables below
- Make choices from OPTIONS table, adding suffix codes to EPIT CORNER DOOR code and surcharges to THREE-SIDED DOOR price; Standard options will be supplied unless otherwise specified
- Bespoke (BES) and Ultra Bespoke (ULTR) THREE-SIDED DOOR and SIDE PANEL sizes are listed, please see the BESPOKE OPTIONS table and page 44 for more information

DIMENSIONS (MM)				PRICES		
CORNER DOOR	A + B + C	A	B	C	£ EX. VAT	£ INC. VAT
EPIT1300BES	1100mm to 1300mm	Max: 700	500	600	£2,975.00	£3,570.00
EPIT1300ULTR	1100mm to 1300mm	Max: 700	500	600	£3,665.00	£4,398.00
EPIT1600BES	Up to 1600mm	Max: 700	500	600	£3,114.00	£3,736.80
EPIT1600ULTR	Up to 1600mm	Max: 700	500	600	£4,012.00	£4,814.40
EPIT1800BES	Up to 1800mm	Max: 700	500	600	£3,253.00	£3,903.60
EPIT1800ULTR	Up to 1800mm	Max: 700	500	600	£4,179.00	£5,014.80

SIDE PANEL (ADD 2)	D + E	£ EX. VAT	£ INC. VAT
EPIT800SPBES	Up to 800mm	£840.00	£1,008.00
EPIT800SPULTR	Up to 800mm	£1,141.00	£1,369.20
EPIT1000SPBES	Up to 1000mm	£938.00	£1,125.60
EPIT1000SPULTR	Up to 1000mm	£1,254.00	£1,504.80

MATKI INSTALLATIONS	CODE	£ EX. VAT	£ INC. VAT
Measure	MS	£242.00	£290.40
Installation - Standard or Bespoke	INST	£875.00	£1,050.00
Measure and Installation	MSINST	£1,117.00	£1,340.40

See page 43. Measure is optional for Standard and Bespoke (BES) models but required for Ultra Bespoke (ULTR). Product and Installation prices may change after measure. For areas outside the UK mainland, please contact Matki for pricing. Please contact Matki for installation prices at heights above 2200mm.



OPTIONS

HANDLING	DOOR OPENING
Left Hand - LH	Right Hand - RH
	Outwards (Standard) Inwards - INW

HANDLES
Linear - LNR (Standard)
Traditional - TRAD
Ⓢ Illustrious - IST
Ⓢ Engineer - ENG (Add £95 ex VAT)

FRAME FINISHES	£ EX. VAT	£ INC. VAT
Sliver/Chrome - SC (Standard)	-	-
Matt Black - MB	£524.00	£628.80
Ⓢ Living Brass - LB	£448.00	£537.60
Ⓢ Polished Chrome - CP / Brushed Brass - BB	£560.00	£672.00
Ⓢ Polished Nickel - NP / Living Copper - LC	£776.00	£931.20
Ⓢ Brushed Nickel - NB / Aged Brass - AB	£926.00	£1,111.20
Ⓢ Polished Gold - MG / Black Chrome - XP	£952.00	£1,142.40
Ⓢ Brushed Gold - GB / Brushed Black Chrome - XB	£1,119.00	£1,342.80

BESPOKE (BES) & ULTRA BESPOKE (ULTR) OPTIONS	BES	ULTR
	Add Surcharges to BES/ULTR Prices	
Width changes up to dimensions listed	✓	✓
Width changes above max panel dims. listed <sup>1*</sup>	Add £115 per 100mm ex VAT	
Reduced height	✓	✓
Increased height per panel/door <sup>2*</sup>	Add £86 per 100mm ex VAT	
Glass Shaping: e.g. Angles, Cut Outs <sup>3</sup>	✗	✓
Circular Hole Handle	Add £115 ex VAT	
<b>All Glass finish prices refer to whole product EPIT + 2 x SP</b>		
Tinted / Low Iron Glass Finish - see page 40	Add £535 ex VAT	
Satin/Frosted Glass Finish	Add £633 ex VAT	
Ultra Black Glass Finish	Add £1,248 ex VAT	
Medium Frame - see page 41	✓	✓
Ultra Bespoke Frames - see page 41 <sup>3</sup>	✗	✓

<sup>1</sup> B/C/D/E Panels only; may require brace bars or ceiling brackets.

<sup>2</sup> Max 2.4m high with BES (standard frames), Max 3m with ULTR. Additional hinge (£224 ex VAT), wall brackets (£100 ex VAT) and corner brackets (£207 ex VAT) may be required.

<sup>3</sup> Require Measure and Installation.

\* For special glass finishes in oversize dimensions, add 10% to Glass Finish surcharges for every 100mm of extra height and width above maximum standard size panels.



## 60. EHCL: HINGED DOOR WITH HINGE PANEL AND RADIUS 20 PANEL FOR CORNER

### HOW TO ORDER

- Select CORNER DOOR and SIDE PANEL models from tables below
- Alternative standard door and panel combinations are available at the same price for each model size. The drawing opposite shows the standard panel sizes available
- Make choices from OPTIONS table, adding suffix codes to EHCL CORNER DOOR code and surcharges to CORNER DOOR price; standard options will be supplied unless otherwise specified
- Bespoke (BES) and Ultra Bespoke (ULTR) CORNER DOOR sizes are listed, please see the BESPOKE OPTIONS table and page 44 for more information

DIMENSIONS (MM)				PRICES		
CORNER DOOR	A+B+C	A	B	C	£ EX. VAT	£ INC. VAT
EHCL1200	1167 – 1182	700	250	250	£1,816.00	£2,179.20
EHCL1300	1267 – 1282	700	350	250	£1,862.00	£2,234.40
EHCL1300BES	Up to 1300mm			250	£2,284.00	£2,740.80
EHCL1300ULTR	Up to 1300mm			250	£2,552.00	£3,062.40
EHCL1400	1367 – 1382	700	450	250	£1,881.00	£2,257.20
EHCL1500	1467 – 1482	700	550	250	£1,912.00	£2,294.40
EHCL1600	1567 – 1582	800	550	250	£1,943.00	£2,331.60
EHCL1600BES	Up to 1600mm			250	£2,456.00	£2,947.20
EHCL1600ULTR	Up to 1600mm			250	£2,739.00	£3,286.80

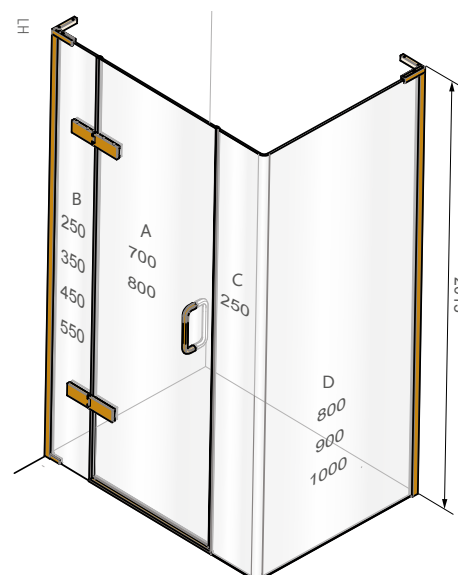
  

SIDE PANEL	D	£ EX. VAT	£ INC. VAT
EWL800SP	770 – 785	£1,556.00	£1,867.20
EWL900SP	870 – 885	£1,620.00	£1,944.00
EWL1000SP	970 – 985	£1,651.00	£1,981.20

EWL Side Panel is not available in Bespoke or Ultra Bespoke

MATKI INSTALLATIONS	CODE	£ EX. VAT	£ INC. VAT
Measure	MS	£242.00	£290.40
Installation – Standard or Bespoke	INST	£785.00	£942.00
Measure and Installation	MSINST	£1,027.00	£1,232.40

See page 43. Measure is optional for Standard and Bespoke (BES) models but required for Ultra Bespoke (ULTR). Product and Installation prices may change after measure. For areas outside the UK mainland, please contact Matki for pricing.



### OPTIONS

HANDLING	DOOR OPENING
Left Hand Corner - LH	Right Hand Corner - RH
	Outwards (Standard)

HANDLES
Linear - LNR (Standard)
Traditional - TRAD
Ⓢ Illustrious - IST
Ⓢ Engineer - ENG (Add £95 ex VAT)

FRAME ACCENTS	£ EX. VAT	£ INC. VAT
None (Standard)	-	-
EHCL Frame Accent Pack - FVP*	£577.00	£692.40

\*Only available in Ⓢ finishes

FRAME FINISHES	£ EX. VAT	£ INC. VAT
Sliver/Chrome - SC (Standard)	-	-
Matt Black - MB	£524.00	£628.80
Ⓢ Living Brass - LB	£448.00	£537.60
Ⓢ Polished Chrome - CP / Brushed Brass - BB	£560.00	£672.00
Ⓢ Polished Nickel - NP / Living Copper - LC	£776.00	£931.20
Ⓢ Brushed Nickel - NB / Aged Brass - AB	£926.00	£1,111.20
Ⓢ Polished Gold - MG / Black Chrome - XP	£952.00	£1,142.40
Ⓢ Brushed Gold - GB / Brushed Black Chrome - XB	£1,119.00	£1,342.80

BESPOKE (BES) & ULTRA BESPOKE (ULTR) OPTIONS	BES	ULTR
	Add Surcharges to BES/ULTR Prices	
Width changes up to dimensions listed	✓	✓
Width changes above max panel dims. listed <sup>1</sup>	Add £115 ex VAT per 100mm	
Glass Shaping: e.g. Angles, Cut Outs <sup>2</sup>	✗	✓
Circular Hole Handle	Add £115 ex VAT	
Medium Frame - see page 41 <sup>3</sup>	✓	✓

<sup>1</sup> A Panel only; always requires brace bar (add £141 ex VAT for SC,MB; £211 ex VAT for Ⓢ finishes).

<sup>2</sup> Only available on A Hinge Panel and B Door.

<sup>3</sup> Walls must be plumb and dimensions should be carefully considered as EWL side panel not available Bespoke.



## 62. EPQ: QUINTESSE DESIGN WITH HINGED DOOR

### HOW TO ORDER

- Select QUINTESSE model from table below
- Make choices from OPTIONS table, adding suffix codes to EPQ QUINTESSE code and surcharges to price; standard options will be supplied unless otherwise specified
- Bespoke (BES) and Ultra Bespoke (ULTR) RECESS sizes are listed, please see the BESPOKE OPTIONS table and page 44 for more information

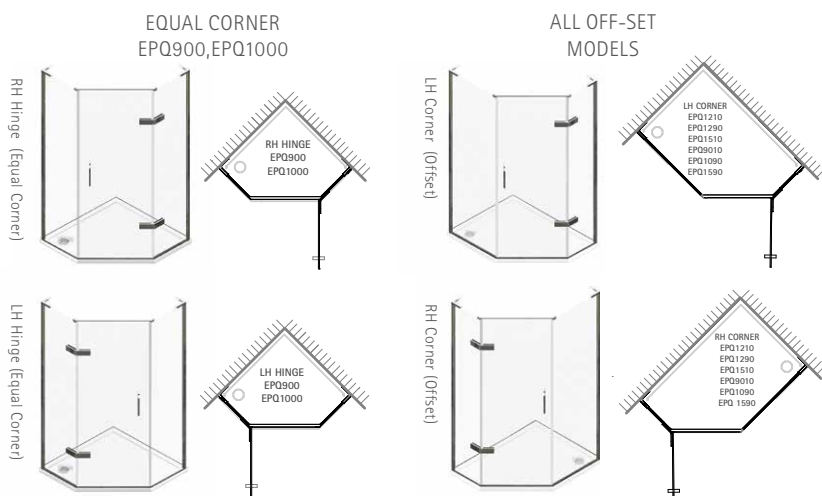
DIMENSIONS (MM)			PRICES		
CORNER	HINGE SIDE	CLOSURE SIDE	DIAGONAL	£ EX. VAT	£ INC. VAT
EPQ900*	868 - 883	868 - 883	872 - 893	£2,177.00	£2,612.40
EPQ9010	868 - 883	968 - 983	943 - 964	£2,207.00	£2,648.40
EPQ1000*	968 - 983	968 - 983	1014 - 1035	£2,240.00	£2,688.00
EPQ1090	968 - 983	868 - 883	943 - 964	£2,210.00	£2,652.00
EPQ1000BES	Up to 1000mm	Up to 1000mm		£2,699.00	£3,238.80
EPQ1000ULTR	Up to 1000mm	Up to 1000mm		£2,992.00	£3,590.40
EPQ1290*	868 - 883	1168 - 1183	1085 - 1106	£2,296.00	£2,755.20
EPQ1210	968 - 983	1168 - 1183	1156 - 1177	£2,329.00	£2,794.80
EPQ1590*	868 - 883	1468 - 1483	1297 - 1318	£2,394.00	£2,872.80
EPQ1510	968 - 983	1468 - 1483	1368 - 1389	£2,427.00	£2,912.40
EPQ1510BES	Up to 1000mm	Up to 1500mm		£3,008.00	£3,609.60
EPQ1510ULTR	Up to 1000mm	Up to 1500mm		£3,283.00	£3,939.60

\*Recommended Shower Tray CLQ (see page 83), for all other models MP M-T-M (see page 81).

MATKI INSTALLATIONS	CODE	£ EX. VAT	£ INC. VAT
Measure	MS	£242.00	£290.40
Installation - Standard or Bespoke	INST	£695.00	£834.00
Measure and Installation	MSINST	£937.00	£1,124.40

See page 43. Measure is optional for Standard and Bespoke (BES) models but required for Ultra Bespoke (ULTR). Product and Installation prices may change after measure. For areas outside the UK mainland, please contact Matki for pricing. Please contact Matki for installation prices at heights above 2200mm.

### CONFIGURATIONS & HANDING



If ordering models EPQ900/1000 please state LH or RH hinge. If ordering models EPQ 9010/1290/1210/1590/1510/1090 please state LH or RH Corner. Door hinges from narrower panel on all models except EPQ1090



### OPTIONS

#### HANDING - CORNER

Left Hand - LH  
Right Hand - RH

#### HANDING - OFFSET CORNER

Left Hand Corner - LH  
Right Hand Corner - RH

#### DOOR OPENING

Outwards (Standard)

#### HANDLES

Linear - LNR (Standard)  
Curved - CRV

Traditional - TRAD

#### FRAME FINISHES

Silver/Chrome - SC (Standard)

£ EX. VAT £ INC. VAT

- -

BESPOKE (BES) & ULTRA BESPOKE (ULTR) OPTIONS	BES	ULTR
Width changes up to dimensions listed	✓	✓
Width changes above max panel dims. listed <sup>1*</sup>	Add £115 ex VAT per 100mm	
Reduced height	Add £454 ex VAT	
Increased height per panel/door <sup>2*</sup>	Add £86 ex VAT per 100mm	
Glass Shaping: e.g. Angles, Cut Outs <sup>3</sup>	✗	✓
Circular Hole Handle	Add £115 ex VAT	
<b>All Glass finish prices refer to whole product EPQ.</b>		
Tinted / Low Iron Glass Finish - see page 40	Add £368 ex VAT	
Satin/Frosted Glass Finish	Add £431 ex VAT	
Ultra Black Glass Finish	Add £845 ex VAT	
Ultra Bespoke Frames - see page 41 <sup>3</sup>	✗	✓

<sup>1</sup> B/C Panels only; door opening must stay 695 unless B and C panels run floor to ceiling (requires Measure and Installation).

<sup>2</sup> Max 2.4 high with BES (standard frames), Max 3m with ULTR. Additional Hinge (£224 ex VAT) may be required.

<sup>3</sup> Require Measure and Installation.

<sup>†</sup> First add £495 ex VAT if bespoke height door required.

\* For special glass finishes in oversize dimensions, add 10% to Glass Finish surcharges for every 100mm of extra height or width above maximum standard size panels.



HOW TO ORDER

- Select Wet Room Panel Size
- Make choices from OPTIONS table, adding suffix codes to EWP code and surcharges to EWP price; standard options will be supplied unless otherwise specified
- Bespoke (BES) and Ultra Bespoke (ULTR) EWP sizes are listed, please see the BESPOKE OPTIONS table and page 44 for more information

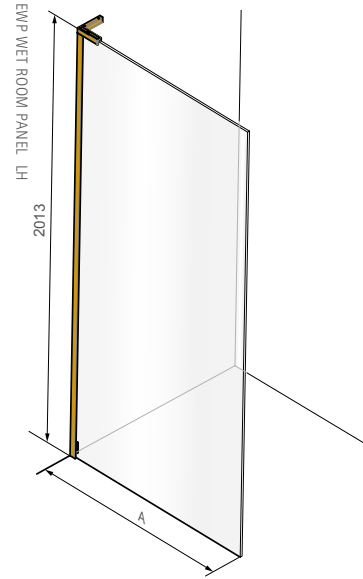
DIMENSIONS (MM)		PRICES	
EWP	A	£ EX. VAT	£ INC. VAT
EWP200	164 - 179	£470.00	£564.00
EWP300	264 - 279	£487.00	£584.40
EWP400	364 - 379	£508.00	£609.60
EWP500	464 - 479	£530.00	£636.00
EWP500BES	Up to 500mm	£696.00	£835.20
EWP500ULTR	Up to 500mm	£919.00	£1,102.80
EWP600	564 - 579	£554.00	£664.80
EWP700	664 - 679	£575.00	£690.00
EWP760	724 - 739	£592.00	£710.40
EWP800	764 - 779	£605.00	£726.00
EWP800BES	Up to 800mm	£804.00	£964.80
EWP800ULTR	Up to 800mm	£1,064.00	£1,276.80
EWP900*	864 - 879	£622.00	£746.40
EWP1000*	964 - 979	£672.00	£806.40
EWP1100*	1064 - 1079	£734.00	£880.80
EWP1100BES	Up to 1100mm	£994.00	£1,192.80
EWP1100ULTR	Up to 1100mm	£1,250.00	£1,500.00
EWP1200*	1164 - 1179	£834.00	£1,000.80
EWP1300	1264 - 1279	£915.00	£1,098.00
EWP1400	1364 - 1379	£948.00	£1,137.60
EWP1500	1464 - 1479	£1,007.00	£1,208.40
EWP1500BES	Up to 1500mm	£1,386.00	£1,663.20
EWP1500ULTR	Up to 1500mm	£1,557.00	£1,868.40

EWP1200 and above come with a wall brace bar. For brace bars in (S) marked finishes, please choose from STANDARD 765 - 905mm and LONG 865 - 1005mm. For bespoke wall braces longer than 1005mm or Ceiling Braces state type and width required and add a surcharge of £375 ex VAT.

\* Available as standard with choice of Towel Rail (600mm centres), see page 37, please add RAIL to end of code.

MATKI INSTALLATIONS	CODE	£ EX. VAT	£ INC. VAT
Measure	MS	£242.00	£290.40
Installation - Standard or Bespoke up to 900mm wide	INST	£423.00	£507.60
Installation - Standard or Bespoke above 900mm wide	INST	£514.00	£616.80
Measure and Installation up to 900mm	MSINST	£665.00	£798.00
Measure and Installation above 900mm	MSINST	£756.00	£907.20

See page 43. Measure is optional for Standard and Bespoke (BES) models but required for Ultra Bespoke (ULTR). Product and Installation prices may change after measure. For areas outside the UK mainland, please contact Matki for pricing. Please contact Matki for installation prices at heights above 2200mm.



OPTIONS

HANDING

Left Hand - LH Right Hand - RH

FRAME TYPES

Standard Frame  
Medium Frame - MED\*

\*Reduces adjustment range A max dimension by 5mm.

FRAME ACCENTS

	£ EX. VAT	£ INC. VAT
None (Standard)	-	-
EWP Panel End Vertical - FVP*	£308.00	£369.60

\*Only available in (S) finishes below

FRAME FINISHES

	£ EX. VAT	£ INC. VAT
Sliver/Chrome - SC (Standard)	-	-
Matt Black - MB	£278.00	£333.60
(S) Living Brass - LB	£280.00	£336.00
(S) Polished Chrome - CP / Brushed Brass - BB	£336.00	£403.20
(S) Polished Nickel - NP / Living Copper - LC	£392.00	£470.40
(S) Brushed Nickel - NB / Aged Brass - AB	£444.00	£532.80
(S) Polished Gold - MG / Black Chrome - XP	£454.00	£544.80
(S) Brushed Gold - GB / Brushed Black Chrome - XB	£493.00	£591.60

BESPOKE (BES) & ULTRA BESPOKE (ULTR) OPTIONS

	BES	ULTR
	Add Surcharges to BES/ULTR Prices	
Width change up to dimensions listed	✓	✓
Width change above max panel dims. listed *	Add £115 ex VAT per 100mm	
Reduced height	✓	✓
Increased height 1*	Add £86 ex VAT per 100mm	
Glass Shaping: e.g. Angles, Cut Outs 2	✗	✓
Holes for Towel Rail fitting - see page 37	Add £69 ex VAT	
Tinted / Low Iron Glass Finish - see page 40	Add £351 ex VAT	
Satin/Frosted Glass Finish	Add £403 ex VAT	
Ultra Black Glass Finish	Add £667 ex VAT	
Ultra Bespoke Frames - see page 41	✗	✓

\* Panels attaching to ceiling may require extra wall or ceiling bracket with surcharge of £100 ex VAT.

1 Max 2.4m high with BES (standard / medium frames), Max 3m with ULTR.

2 Require Measure and Installation.

3 For special glass finishes in oversize dimensions, add 10% to Glass Finish surcharges for every 100mm of extra height or width above maximum standard size panels.

## 64. EWFP: FRAMED WET ROOM PANEL

### HOW TO ORDER

- Select Wet Room Panel Size
- Make choices from OPTIONS table, adding suffix codes to EWFP code and surcharges to EWFP price; standard options will be supplied unless otherwise specified
- Bespoke (BES) EWFP sizes are listed, please see the BESPOKE OPTIONS table and page 44 for more information

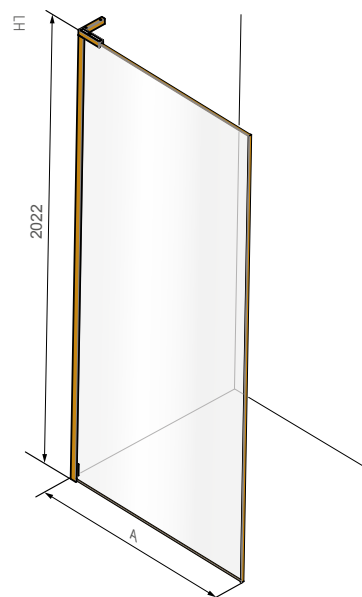
DIMENSIONS (MM)		PRICES	
EWFP	A	£ EX. VAT	£ INC. VAT
EWFP200	165 - 180	£1,094.00	£1,312.80
EWFP300	265 - 280	£1,141.00	£1,369.20
EWFP400	365 - 380	£1,189.00	£1,426.80
EWFP500	465 - 480	£1,236.00	£1,483.20
EWFP500BES	Up to 500mm	£1,495.00	£1,794.00
EWFP600	565 - 580	£1,284.00	£1,540.80
EWFP700	665 - 680	£1,332.00	£1,598.40
EWFP760	725 - 740	£1,361.00	£1,633.20
EWFP800	765 - 780	£1,379.00	£1,654.80
EWFP900*	865 - 880	£1,427.00	£1,712.40
EWFP1000*	965 - 980	£1,474.00	£1,768.80
EWFP1100*	1065 - 1080	£1,521.00	£1,825.20
EWFP1100BES	Up to 1100mm	£1,856.00	£2,227.20
EWFP1200*	1165 - 1180	£1,718.00	£2,061.60
EWFP1300	1265 - 1280	£1,790.00	£2,148.00
EWFP1400	1365 - 1380	£1,835.00	£2,202.00
EWFP1500	1465 - 1480	£1,880.00	£2,256.00
EWFP1500BES	Up to 1500mm	£2,425.00	£2,910.00

\*Available as standard with choice of Towel Rail (600mm centres), see page 37, please add RAIL to end of code.

EWFP1200 and above come with a wall brace bar. Please choose from STANDARD 765 - 905mm and LONG 865 - 1005mm. For bespoke wall braces longer than 1005mm or ceiling braces state type and width required and add surcharge of £375 ex VAT.

MATKI INSTALLATIONS	CODE	£ EX. VAT	£ INC. VAT
Measure	MS	£242.00	£290.40
Installation - Standard or Bespoke up to 900mm wide	INST	£423.00	£507.60
Installation - Standard or Bespoke above 900mm wide	INST	£514.00	£616.80
Measure and Installation up to 900mm	MSINST	£665.00	£798.00
Measure and Installation above 900mm	MSINST	£756.00	£907.20

See page 43. Measure is optional for Standard and Bespoke (BES) models. Product and Installation prices may change after measure. For areas outside the UK mainland, please contact Matki for pricing. Please contact Matki for installation prices at heights above 2200mm.



### OPTIONS

#### HANDING

Left Hand - LH

Right Hand - RH

#### WALL FRAME TYPES

Standard Frame

Medium Frame - MED\*

\*Reduces adjustment range A max dimension by 5mm.

#### FRAME FINISHES

	£ EX. VAT	£ INC. VAT
Ⓢ Polished Chrome - CP (Standard) / Brushed Brass - BB	-	-
Ⓢ Living Brass	-£44.00	-£52.80
Ⓢ Polished Nickel - NP / Living Copper - LC	£138.00	£165.60
Ⓢ Brushed Nickel - NB / Aged Brass - AB	£231.00	£277.20
Ⓢ Polished Gold - MG / Black Chrome - XP	£241.00	£289.20
Ⓢ Brushed Gold - GB / Brushed Black Chrome - XB	£342.00	£410.40

#### BESPOKE (BES) &

#### ULTRA BESPOKE (ULTR) OPTIONS

#### BES

Add Surcharges to BES Prices

Width change up to dimensions listed	✓
Width change above max panel dims. listed *	Add £115 ex VAT per 100mm
Reduced height	✓
Increased height <sup>1</sup> *	Add £109 ex VAT per 100mm
Holes for Towel Rail Fitting, see page 37	Add £69 ex VAT
Tinted / Low Iron Glass Finish <sup>2</sup> (see page 40)	Add £351 ex VAT
Satin/Frosted Glass Finish <sup>2</sup>	Add £403 ex VAT
Ultra Black Glass Finish <sup>2</sup>	Add £667 ex VAT

\* Panels attaching to ceiling may require extra wall or ceiling bracket with surcharge of £100 ex VAT.

<sup>1</sup> Max 2.5m high.

<sup>2</sup> For special glass finishes in oversize dimensions, add 10% to Glass Finish surcharges for every 100mm of extra height or width above maximum standard size panels.

HOW TO ORDER

- Select Wet Room Panel Size
- Make choices from OPTIONS table, adding suffix codes to EWMP code and surcharges to EWMP price; standard options will be supplied unless otherwise specified
- Bespoke (BES) EWMP sizes are listed, please see the BESPOKE OPTIONS table and page 44 for more information

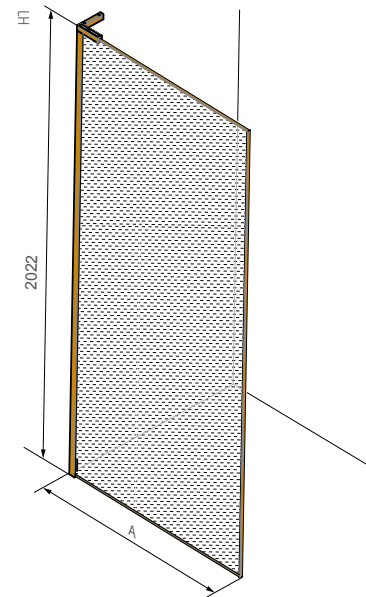
DIMENSIONS (MM)		PRICES	
<b>EWMP - SM SILVER MESH</b>	<b>A</b>	<b>£ EX. VAT</b>	<b>£ INC. VAT</b>
EWMP800SM	765 - 780	£3,249.00	£3,898.80
EWMP900SM	865 - 880	£3,529.00	£4,234.80
EWMP1000SM	965 - 980	£3,815.00	£4,578.00
EWMP1000BESSM	Up to 1000mm	£4,631.00	£5,557.20
EWMP1100SM	1065 - 1080	£4,101.00	£4,921.20
EWMP1200SM	1165 - 1180	£4,521.00	£5,425.20
EWMP1500BESSM	Up to 1500mm	£6,362.00	£7,634.40

DIMENSIONS (MM)		PRICES	
<b>EWMP - GM GOLD MESH</b>	<b>A</b>	<b>£ EX. VAT</b>	<b>£ INC. VAT</b>
EWMP800GM	765 - 780	£3,506.00	£4,207.20
EWMP900GM	865 - 880	£3,819.00	£4,582.80
EWMP1000GM	965 - 980	£4,140.00	£4,968.00
EWMP1000BESGM	Up to 1000mm	£4,869.00	£5,842.80
EWMP1100GM	1065 - 1080	£4,459.00	£5,350.80
EWMP1200GM	1165 - 1180	£4,907.00	£5,888.40
EWMP1500BESGM	Up to 1500mm	£6,970.00	£8,364.00

EWMP1200 and above come with a wall brace bar. Please choose from STANDARD 765 - 905mm and LONG 865 - 1005mm. For bespoke wall braces longer than 1005mm or ceiling braces state type and width required and add a surcharge of £375 ex VAT.

MATKI INSTALLATIONS	CODE	£ EX. VAT	£ INC. VAT
Measure	MS	£242.00	£290.40
Installation - Standard or Bespoke up to 900mm wide	INST	£423.00	£507.60
Installation - Standard or Bespoke above 900mm wide	INST	£514.00	£616.80
Measure and Installation up to 900mm	MSINST	£665.00	£798.00
Measure and Installation above 900mm	MSINST	£756.00	£907.20

See page 43. Measure is optional for Standard and Bespoke (BES) models. Product and Installation prices may change after measure. For areas outside the UK mainland, please contact Matki for pricing. Please contact Matki for installation prices at heights above 2200mm.



OPTIONS

HANDING	
Left Hand - LH	Right Hand - RH

WALL FRAME TYPES	
Standard Frame	
Medium Frame - MED*	

\*Reduces adjustment range A max dimension by 5mm.

FRAME FINISHES	£ EX. VAT	£ INC. VAT
Ⓢ Polished Chrome - CP (Standard)/ Brushed Brass - BB	-	-
Ⓢ Living Brass	-£44.00	-£52.80
Ⓢ Polished Nickel - NP / Living Copper - LC	£138.00	£165.60
Ⓢ Brushed Nickel - NB / Aged Brass - AB	£231.00	£277.20
Ⓢ Polished Gold - MG / Black Chrome - XP	£241.00	£289.20
Ⓢ Brushed Gold - GB / Brushed Black Chrome - XB	£342.00	£410.40

BESPOKE (BES) & ULTRA BESPOKE (ULTR) OPTIONS	BES Add Surcharges to BES Prices
Width changes up to dimensions listed *	✓
Width changes above max panel dims. listed * <sup>1</sup>	Add £431 ex VAT per 100mm
Reduced height	✓
Increased height up to max 2.5m	Add £345 ex VAT per 100mm

\* Panels attaching to ceiling may require extra ceiling frame with additional surcharge.  
<sup>1</sup> Max 2.5m high.



## 66. EWL - RADIUS - 20 WET ROOM PANEL

### HOW TO ORDER

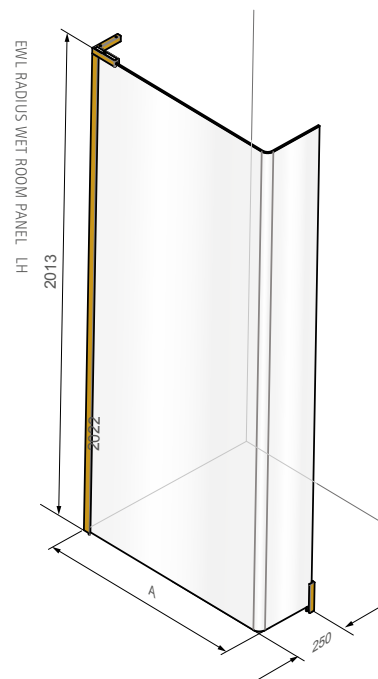
- Select Wet Room Panel Size
- Make choices from OPTIONS table, adding suffix codes to EWL code and surcharges to EWL price; standard options will be supplied unless otherwise specified

DIMENSIONS (MM)		PRICES	
EWL	A	£ EX. VAT	£ INC. VAT
EWL800	754 - 764	£1,606.00	£1,927.20
EWL900	870 - 885	£1,664.00	£1,996.80
EWL1000	970 - 985	£1,735.00	£2,082.00

MATKI INSTALLATIONS	CODE	£ EX. VAT	£ INC. VAT
Measure	MS	£242.00	£290.40
Installation - Standard or Bespoke	INST	£514.00	£616.80
Measure and Installation	MSINST	£756.00	£907.20

See page 43. Measure is optional. For areas outside the UK mainland and Ireland, please contact Matki for pricing.



### OPTIONS

#### HANDING

Left Hand - LH

Right Hand - RH

#### WALL FRAME TYPES

Standard Frame

Medium Frame - MED\*

\*Reduces adjustment range A max dimension by 5mm.

#### FRAME FINISHES

FRAME FINISHES	£ EX. VAT	£ INC. VAT
Sliver/Chrome - SC (Standard)	-	-
Matt Black - MB	£278.00	£333.60
Ⓢ Living Brass	£280.00	£336.00
Ⓢ Polished Chrome - CP (Standard) / Brushed Brass - BB	£336.00	£403.20
Ⓢ Polished Nickel - NP / Living Copper - LC	£392.00	£470.40
Ⓢ Brushed Nickel - NB / Aged Brass - AB	£444.00	£532.80
Ⓢ Polished Gold - MG / Black Chrome - XP	£454.00	£544.80
Ⓢ Brushed Gold - GB / Brushed Black Chrome - XB	£493.00	£591.60

HOW TO ORDER

- Select FIXED PANEL and HINGE PANEL sizes
- Make choices from OPTIONS table, adding suffix codes to EWPB and EWPB-HP code and surcharges to prices; standard options will be supplied unless otherwise specified
- Bespoke (BES) and Ultra Bespoke (ULTR) EWPB and EWPB-HP sizes are listed, please see the BESPOKE OPTIONS table and page 44 for more information

DIMENSIONS (MM)		PRICES	
FIXED PANEL	A	£ EX. VAT	£ INC. VAT
EWPB725FP	695 - 710	£1,008.00	£1,209.60
EWPB950FP	915 - 930	£1,080.00	£1,296.00
EWPB1100FP	1065 - 1080	£1,150.00	£1,380.00
EWPB1100FPBES	Up to 1100mm	£1,889.00	£2,266.80
EWPB1100FPULTR	Up to 1100mm	£2,489.00	£2,986.80

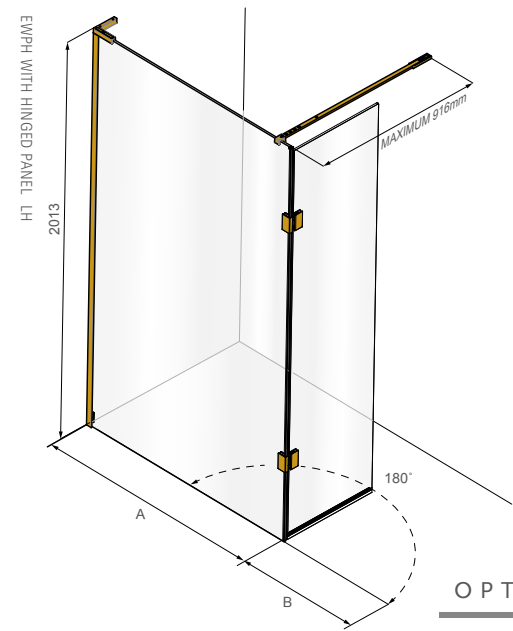
DIMENSIONS (MM)		PRICES	
HINGE PANEL	B	£ EX. VAT	£ INC. VAT
EWPB300HP	300	£325.00	£390.00
EWPB440HP	440	£332.00	£398.40
EWPB490HP	490	£345.00	£414.00
EWPB500BESHP	Up to 500mm	£914.00	£1,096.80

Fixed Panel and Hinge Panel are delivered pre-assembled.

All EWPB models come with a wall brace bar. For brace bars in (S) marked finishes, please choose from STANDARD 765 - 905mm and LONG 865 - 1005mm. For bespoke wall braces longer than 1005mm state width required and add a surcharge of £375 ex VAT.

MATKI INSTALLATIONS	CODE	£ EX. VAT	£ INC. VAT
Measure	MS	£242.00	£290.40
Installation - Standard or Bespoke	INST	£514.00	£616.80
Measure and Installation	MSINST	£756.00	£907.20

See page 43. Measure is optional for Standard and Bespoke (BES) models but required for Ultra Bespoke (ULTR). Product and Installation prices may change after measure. For areas outside the UK mainland, please contact Matki for pricing. Please contact Matki for installation prices at heights above 2200mm.



OPTIONS

HANDING		PANEL OPENING	
Left Hand - LH	Right Hand - RH	Inwards (Standard)	Outwards - OTW

WALL FRAME TYPES	
Standard Frame	
Medium Frame - MED*	

\*Reduces adjustment range A max dimension by 5mm.

FRAME FINISHES	£ EX. VAT	£ INC. VAT
Sliver/Chrome - SC (Standard)	-	-
Matt Black - MB	£444.00	£532.80
(S) Polished Chrome - CP	£398.00	£477.60
(S) Polished Nickel - NP	£517.00	£620.40
(S) Brushed Nickel - NB	£599.00	£718.80
(S) Polished Gold - MG / Black Chrome - XP	£613.00	£735.60
(S) Brushed Gold -GB / Brushed Black Chrome - XB	£702.00	£842.40

BESPOKE (BES) & ULTRA BESPOKE (ULTR) OPTIONS	BES	ULTR
	Add Surcharges to BES/ULTR Prices	
Width change up to dimensions listed	✓	✓
Width change above max panel dims. listed *	Add £115 ex VAT per 100mm	
Reduced height	✓	✓
Increased height per panel*	Add £86 ex VAT per 100mm	
Glass Shaping: e.g. Angles, Cut Outs <sup>2</sup>	×	✓
Holes for Towel Rail Fitting (EWPB only) - see page 37	Add £69 ex VAT	
<b>All Glass finish prices refer to whole product EWPB + EWPB-HP</b>		
Tinted / Low Iron Glass Finish <sup>2</sup> - see page 40	Add £368 ex VAT	
Satin/Frosted Glass Finish <sup>2</sup>	Add £431 ex VAT	
Ultra Black Glass Finish <sup>2</sup>	Add £759 ex VAT	
Ultra Bespoke Frames <sup>3</sup> - see page 41	×	✓

<sup>1</sup> Max 2.4m high with BES (standard frames), Max 3m with ULTR - additional hinge may be required with surcharge.

<sup>2</sup> Require Measure and Installation.

\* For special glass finishes in oversize dimensions, add 10% to Glass Finish surcharges for every 100mm of extra height or width above maximum standard size panels.

## 68. EWT: 12MM GLASS WET ROOM PANEL

### HOW TO ORDER

- Select Wet Room Panel Size
- Make choices from OPTIONS table, adding suffix codes to EWT code and surcharges to EWT price; standard options will be supplied unless otherwise specified

DIMENSIONS (MM)		PRICES		
HINGE PANEL		A	£ EX. VAT	£ INC. VAT
EWT900	NO RAIL	890 - 905	£928.00	£1,113.60
EWT900	TRAD RAIL	890 - 905	£1,209.00	£1,450.80
EWT900	LINEAR RAIL	890 - 905	£1,191.00	£1,429.20
EWT1000	TRAD RAIL	990 - 1005	£1,325.00	£1,590.00
EWT1000	LINEAR RAIL	990 - 1005	£1,307.00	£1,568.40
EWT1200	TRAD RAIL	1190 - 1205	£1,476.00	£1,771.20
EWT1200	LINEAR RAIL	1190 - 1205	£1,458.00	£1,749.60

See page 37 for images. Add £50 ex VAT for Towel Rail to match Brushed Steel and £62 ex VAT for Gold.

ACCESSORIES	£ EX. VAT	£ INC. VAT
Soap Hook on inside of rail	£20.00	£24.00

MATKI INSTALLATIONS	CODE	£ EX. VAT	£ INC. VAT
Measure	MS	£242.00	£290.40
Installation - Standard or Bespoke	INST	£514.00	£616.80
Measure and Installation	MSINST	£756.00	£907.20

See page 43. Measure is optional. For areas outside the UK mainland and Ireland, please contact Matki for pricing.



### OPTIONS

FRAME FINISHES	£ EX. VAT	£ INC. VAT
Sliver/Chrome - SC (Standard)	-	-
Brushed Steel - ST	£278.00	£333.60
Gold - SG	£278.00	£333.60



HOW TO ORDER

- Select TWIN ENTRANCE Wet Room Panel model size
- Make choices from OPTIONS table, adding suffix codes to AST code and surcharges to AST price; standard options will be supplied unless otherwise specified
- Bespoke (BES) and Ultra Bespoke (ULTR) AST sizes are listed, please see the BESPOKE OPTIONS table and page 44 for more information

DIMENSIONS (MM)		PRICES	
TWIN ENTRANCE	A	£ EX. VAT	£ INC. VAT
AST1000	950	£793.00	£951.60
AST1200	1150	£858.00	£1,029.60
AST1200BES	Up to 1200mm	£1,288.00	£1,545.60
AST1200ULTR	Up to 1200mm	£1,480.00	£1,776.00
AST1500	1450	£1,091.00	£1,309.20
AST1500BES	Up to 1500mm	£1,449.00	£1,738.80
AST1500ULTR	Up to 1500mm	£1,696.00	£2,035.20



MATKI INSTALLATIONS	CODE	£ EX. VAT	£ INC. VAT
Measure	MS	£242.00	£290.40
Installation - Standard or Bespoke	INST	£514.00	£616.80
Measure and Installation	MSINST	£756.00	£907.20

See page 43. Measure is optional for Standard and Bespoke (BES) models but required for Ultra Bespoke (ULTR). Product and Installation prices may change after measure. For areas outside the UK mainland, please contact Matki for pricing. Please contact Matki for installation prices at heights above 2200mm and widths above 1700mm.

OPTIONS

FRAME FINISHES	£ EX. VAT	£ INC. VAT
Sliver/Chrome - SC (Standard)	-	-
Matt Black - MB	£196.00	£235.20
Ⓢ Polished Nickel - NP	£85.00	£102.00
Ⓢ Brushed Nickel - NB	£130.00	£156.00
Ⓢ Polished Gold - MG	£142.00	£170.40
Ⓢ Brushed Gold - GB	£184.00	£220.80

BESPOKE (BES) & ULTRA BESPOKE (ULTR) OPTIONS	BES	ULTR
	Add Surcharges to BES/ULTR Prices	
Width changes up to dimensions listed	✓	✓
Width changes above max panel dims. listed *	Add £115 ex VAT per 100mm	
Reduced height*	✓	✓
Increased height*	Add £86 ex VAT per 100mm	
Glass Shaping: e.g. Angles, Cut Outs <sup>1</sup>	✗	✓
Holes for Towel Rail Fitting - see page 37	Add £69 ex VAT per 100mm	
Tinted / Low Iron Glass Finish <sup>2</sup> - see page 40	Add £351 ex VAT	
Satin/Frosted Glass Finish <sup>2</sup>	Add £403 ex VAT	
Ultra Black Glass Finish <sup>2</sup>	Add £667 ex VAT	

\* For fixing to ceiling use Ultra Bespoke (ULTR) codes and prices.

<sup>1</sup> Require Measure and Installation.

<sup>2</sup> For special glass finishes in oversize dimensions, add 10% to Glass Finish surcharges for every 100mm of extra height or width above maximum standard size panels.

## 70. EHW: HINGE PANEL

### HOW TO ORDER

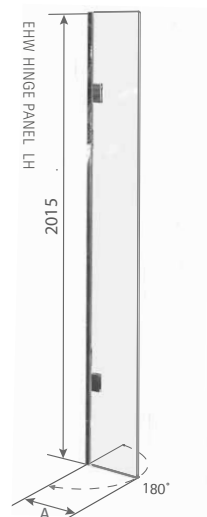
Order with EWP Wet Room Panel - page 63 or to retrofit onto existing wet room panel to provide extra splash protection

DIMENSIONS (MM)		PRICES	
HINGE PANEL	A	£ EX. VAT	£ INC. VAT
EHW300HP	313	£538.00	£645.60

MATKI INSTALLATIONS	CODE	£ EX. VAT	£ INC. VAT
Measure	MS	£242.00	£290.40
Installation - Standard or Bespoke	INST	£423.00	£507.60
Measure and Installation	MSINST	£665.00	£798.00

See page 43. Measure is recommended if being supplied as retrofit product to any other product but a standard EWP Wet Room Panel, see page 63. If being supplied to fit with an EWP Wet Room Panel, measure is not chargeable and add £86 ex VAT to EWP installation price.

Product and Installation prices may change after measure. For areas outside the UK mainland, please contact Matki for pricing.



### OPTIONS

#### HINGE PANEL OPENING

Inwards and Outwards through 180° (Standard)

#### FRAME FINISHES

Sliver/Chrome - SC (Standard)

£ EX. VAT

-

£ INC. VAT

-

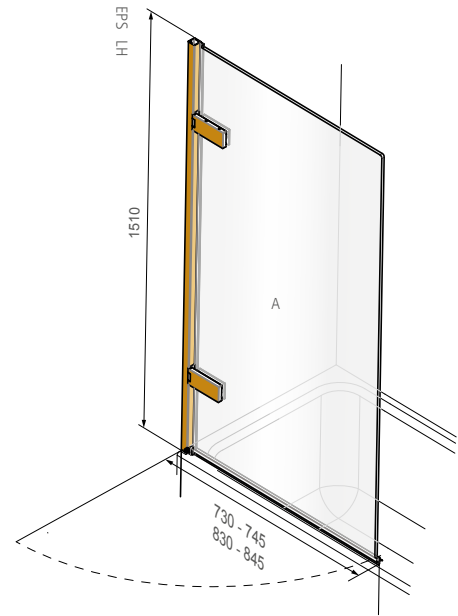
HOW TO ORDER

- Select Model from table below
- Make choices from OPTIONS table, adding suffix codes to EPS code and surcharges to EPS price; standard options will be supplied unless otherwise specified
- Bespoke (BES) and Ultra Bespoke (ULTR) sizes are listed, please see the BESPOKE OPTIONS table and page 44 for more information

DIMENSIONS (MM)		PRICES	
MODEL	A	£ EX. VAT	£ INC. VAT
EPS700	730 – 745	£730.00	£876.00
EPS800	830 – 845	£797.00	£956.40
EPS800BES	Up to 845mm	£941.00	£1,129.20
EPS800ULTR	Up to 845mm	£1,003.00	£1,203.60

MATKI INSTALLATIONS	CODE	£ EX. VAT	£ INC. VAT
Measure	MS	£242.00	£290.40
Installation - Standard or Bespoke	INST	£423.00	£507.60
Measure and Installation	MSINST	£665.00	£798.00

See page 43. Measure is optional for Standard and Bespoke (BES) models but required for Ultra Bespoke (ULTR). Product and Installation prices may change after measure. For areas outside the UK mainland, please contact Matki for pricing. Please contact Matki for installation prices at heights above 2200mm.



OPTIONS

HANDING	PANEL OPENING
Left Hand - LH      Right Hand - RH	Outwards (Standard)

FRAME ACCENTS	£ EX. VAT	£ INC. VAT
None (Standard)	-	-
EPS Frame Accent Pack - FVP*	£235.00	£282.00

\*Only available in (S) finishes below

FRAME FINISHES	£ EX. VAT	£ INC. VAT
Sliver/Chrome - SC (Standard)	-	-
Matt Black - MB	£278.00	£333.60
(S) Polished Chrome - CP	£672.00	£806.40
(S) Polished Nickel - NP / Living Brass -LB	£728.00	£873.60
(S) Brushed Nickel - NB / Brushed Brass - BB	£773.00	£927.60
(S) Living Copper - LC / Aged Brass - AB	£812.00	£974.40
(S) Polished Gold - MG / Black Chrome - XP	£821.00	£985.20
(S) Brushed Gold -GB	£848.00	£1,017.60
(S) Brushed Black Chrome - XB	£848.00	£1,017.60

BESPOKE (BES) & ULTRA BESPOKE (ULTR) OPTIONS	BES	ULTR
	Add Surcharges to BES/ULTR Prices	
Width change up to dimensions listed	✓	✓
Width change above max panel dims. listed *	Add £115 ex VAT per 100mm	
Reduced height	✓	✓
Increased height per panel*	Add £86 ex VAT per 100mm	
Glass Shaping: e.g. Angles <sup>1</sup>	✗	✓
Tinted / Low Iron Glass Finish - see page 40	Add £127 ex VAT	
Satin/Frosted Glass Finish	Add £150 ex VAT	
Ultra Black Glass Finish	Add £293 ex VAT	
Ultra Bespoke Frames - see page 41	✗	✓

<sup>1</sup> Require Measure and Installation.

\* For special glass finishes in oversize dimensions, add 10% to Glass Finish surcharges for every 100mm of extra height and width above maximum standard size panels



## 72. EPB - TWO PANEL BATH SCREEN

### HOW TO ORDER

- Select Model from table below
- Make choices from OPTIONS table, adding suffix codes to EPB code and surcharges to EPB price; standard options will be supplied unless otherwise specified
- Bespoke (BES) and Ultra Bespoke (ULTR) sizes are listed, please see the BESPOKE OPTIONS table and page 44 for more information

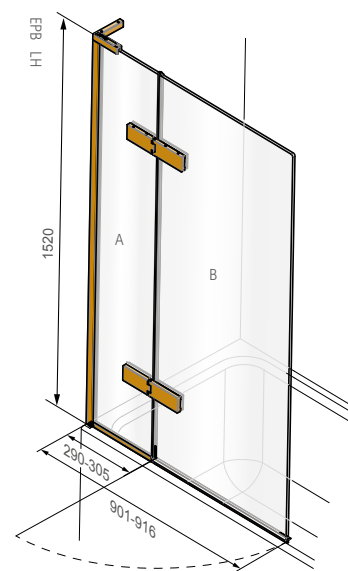
#### DIMENSIONS (MM) PRICES

MODEL	A	B	£ EX. VAT	£ INC. VAT
EPB900	290 – 305	611	£1,013.00	£1,215.60
EPB900BES	Up to 305mm	Up to 611mm	£1,336.00	£1,603.20
EPB900ULTR	Up to 305mm	Up to 611mm	£1,649.00	£1,978.80

#### MATKI INSTALLATIONS CODE £ EX. VAT £ INC. VAT

MATKI INSTALLATIONS	CODE	£ EX. VAT	£ INC. VAT
Measure	MS	£242.00	£290.40
Installation - Standard or Bespoke	INST	£514.00	£616.80
Measure and Installation	MSINST	£756.00	£907.20

See page 43. Measure is optional for Standard and Bespoke (BES) models but required for Ultra Bespoke (ULTR). Product and Installation prices may change after measure. For areas outside the UK mainland, please contact Matki for pricing. Please contact Matki for installation prices at heights above 2200mm.



### OPTIONS

HANDING	PANEL OPENING
Left Hand - LH	Right Hand - RH
	Outwards (Standard) Inwards - INW

FRAME ACCENTS	£ EX. VAT	£ INC. VAT
None (Standard)	-	-
EPB Frame Accent Pack - FVP*	£437.00	£524.40

\*Only available in finishes below.

FRAME FINISHES	£ EX. VAT	£ INC. VAT
Silver/Chrome - SC (Standard)	-	-
Matt Black - MB	£500.00	£600.00
Polished Chrome - CP	£280.00	£336.00
Polished Nickel - NP / Living Brass - LB	£336.00	£403.20
Brushed Nickel - NB / Brushed Brass - BB	£431.00	£517.20
Living Copper - LC / Aged Brass - AB	£497.00	£596.40
Polished Gold - MG / Black Chrome - XP	£512.00	£614.40
Brushed Gold - GB	£558.00	£669.60
Brushed Black Chrome - XB	£558.00	£669.60

BESPOKE (BES) & ULTRA BESPOKE (ULTR) OPTIONS	BES Add Surcharges to BES/ULTR Prices	ULTR
Width change up to dimensions listed	✓	✓
Width change above max panel dims. listed *	Add £115 ex VAT per 100mm	
Reduced height	✓	✓
Increased height per panel*	Add £86 ex VAT per 100mm	
Glass Shaping: e.g. Angles, Cut Outs <sup>1</sup>	✗	✓
<b>All Glass finish prices refer to whole product EPB</b>		
Tinted / Low Iron Glass Finish - see page 40	Add £127 ex VAT	
Satin/Frosted Glass Finish	Add £150 ex VAT	
Ultra Black Glass Finish	Add £293 ex VAT	
Ultra Bespoke Frames - see page 41	✗	✓

<sup>1</sup> Require Measure and Installation.

\* For special glass finishes in oversize dimensions, add 10% to Glass Finish surcharges for every 100mm of extra height and width above maximum standard size panels

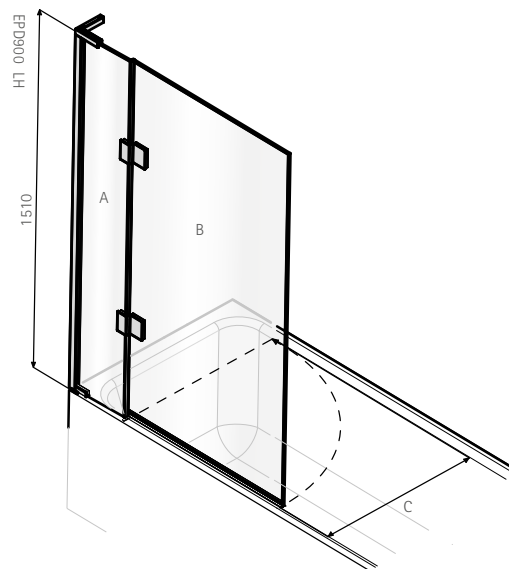
HOW TO ORDER

- █ Select model from table below
- █ Make choices from OPTIONS table, adding suffix codes to EPD code and surcharges to EPD price; standard options will be supplied unless otherwise specified.
- █ Bespoke (BES) and Ultra Bespoke (ULTR) sizes are listed, please see the BESPOKE OPTIONS table and page 44 for more information

DIMENSIONS (MM)				PRICES		
MODEL	A+B	A	B	C	£ EX. VAT	£ INC. VAT
EPD900	942 - 957	252	690	723	£814.00	£976.80
EPD907	942 - 957	332	610	643	£814.00	£976.80
EPD1000	995 - 1010	525	470	504	£832.00	£998.40
EPD1000BES	Up to 1010mm	Up to 525mm	Up to 690mm		£1,456.00	£1,747.20
EPD1000ULTR	Up to 1010mm	Up to 525mm	Up to 690mm		£1,757.00	£2,108.40

MATKI INSTALLATIONS	CODE	£ EX. VAT	£ INC. VAT
Measure	MS	£242.00	£290.40
Installation - Standard or Bespoke	INST	£514.00	£616.80
Measure and Installation	MSINST	£756.00	£907.20

See page 43. Measure is optional for Standard and Bespoke (BES) models but required for Ultra Bespoke (ULTR). Product and Installation prices may change after measure. For areas outside the UK mainland, please contact Matki for pricing. Please contact Matki for installation prices at heights above 2200mm.



OPTIONS

HANDING		PANEL OPENING	
Left Hand - LH	Right Hand - RH	Inwards (Standard)	Outwards - OTW

WALL FRAME TYPES

- Standard Frame
  - Medium Frame - MED\*
- \*Reduces adjustment range A max dimension by 5mm.

FRAME FINISHES	£ EX. VAT	£ INC. VAT
Sliver/Chrome - SC (Standard)	-	-
Matt Black - MB	£500.00	£600.00
Ⓢ Polished Chrome - CP	£280.00	£336.00
Ⓢ Polished Nickel - NP	£336.00	£403.20
Ⓢ Brushed Nickel - NB	£431.00	£517.20
Ⓢ Polished Gold - MG	£497.00	£596.40
Ⓢ Black Chrome - XP	£512.00	£614.40
Ⓢ Brushed Gold -GB / Brushed Black Chrome - XB	£558.00	£669.60

BESPOKE (BES) & ULTRA BESPOKE (ULTR) OPTIONS	BES Add Surcharges to BES/ULTR Prices	ULTR
Width change up to dimensions listed	✓	✓
Width change above max panel dims. listed *	Add £115 ex VAT per 100mm	
Reduced height	✓	✓
Increased height per panel *	Add £86 ex VAT per 100mm	
Glass Shaping: e.g. Angles, Cut Outs <sup>1</sup>	✗	✓
<b>All Glass finish prices refer to whole product EPD</b>		
Tinted / Low Iron Glass Finish - see page 40	Add £132 ex VAT	
Satin/Frosted Glass Finish	Add £155 ex VAT	
Ultra Black Glass Finish	Add £311 ex VAT	
Ultra Bespoke Frames - see page 41	✗	✓

<sup>1</sup> Require Measure and Installation.  
\* For special glass finishes in oversize dimensions, add 10% to Glass Finish surcharges for every 100mm of extra height and width above maximum standard size panels







## SHOWER TRAYS AND FLOORS BY MATKI

Complete luxury in the Shower demands a stunning foundation.

Matki have manufactured Shower Trays in Cornwall since 1979.

Beginning life within a small boat building factory in Penryn, we now operate a 60000 sq. ft purpose-built factory in Redruth.

All our Shower Trays and Floors are hand built and hand finished with precise attention given to the surface finish; robust coatings are then applied using state of the art machinery ensuring perfect durability.

Each important phase of manufacture is carried out by experienced team members, some of whom have worked with Matki since the very early days. With this experience comes an expert knowledge of our products and our quality demands - each Shower Tray that leaves the Redruth factory is inspected with expert eyes.

Matki offer a wide choice of shapes, sizes, styles and colours of Shower Tray including bespoke, designed to work harmoniously with Matki Shower Enclosures.

### PEACE OF MIND

All Matki Shower Trays and Floors use surface materials which are chosen for their longevity, durability and natural non-slip qualities.

Matt White Continental, Preference and Slate are all Certified Anti Slip Rated using the DIN51097 standard framework.



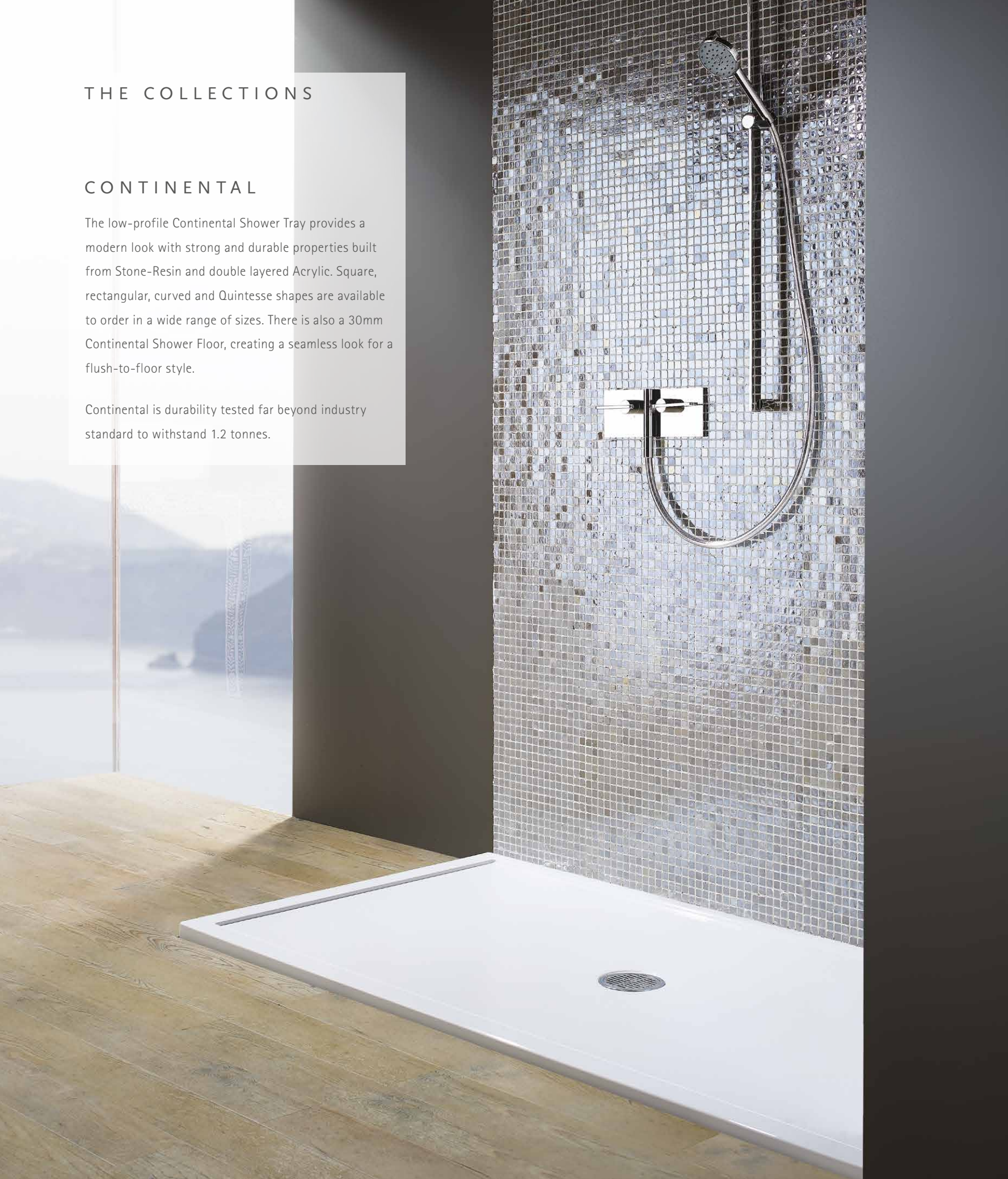


## THE COLLECTIONS

### CONTINENTAL

The low-profile Continental Shower Tray provides a modern look with strong and durable properties built from Stone-Resin and double layered Acrylic. Square, rectangular, curved and Quintesse shapes are available to order in a wide range of sizes. There is also a 30mm Continental Shower Floor, creating a seamless look for a flush-to-floor style.

Continental is durability tested far beyond industry standard to withstand 1.2 tonnes.





## P R E F E R E N C E

Made from the Matki Preference Solid Surface formula rich in ground Marble, Preference Shower Trays and Floors have a luxurious quality each taking up to 6 hours to perfect and hand-polish.

For fitting showering spaces into challenging layouts, bespoke sizes with cut-outs can be produced, catering for internal pipe chases, alcoves and around-bath setups.

Preference Shower Trays and Floors are available in any shape and size up to 2050mm by 1150mm and the central position of the waste can be shifted to avoid joists and other obstructions.



## U N I V E R S A L

Available in any colour to order, our team can use RAL/Pantone charts, tile samples or even paint names to match colours to the wider bathroom design scheme.

Square, rectangle, curved and Quintesse shapes are available to order - the Universal Linear adds a note of difference to the collection with a uniquely designed linear waste cover.



## S L A T E

Modelled on natural slate, the Slate Shower Tray and Floor have an authentic feel harmonising beautifully with natural stone schemes in the bathroom - it is even possible to colour match to surrounding tiling.

Slate Shower Floors can be made to measure in square or rectangular shapes in any size up to 2000mm x 1000mm with a central waste which can be offset dependent on size ordered.



## F I N E L I N E

Striking a fineline between aesthetic and practicality. With a slightly increased height of 60mm, the Fineline brings added peace of mind and a deeper showering area.

Manufactured from high quality Stone Resin with a double layer acrylic cap.



## 78. SQUARE & RECTANGULAR SHOWER TRAYS



### CONTINENTAL 40

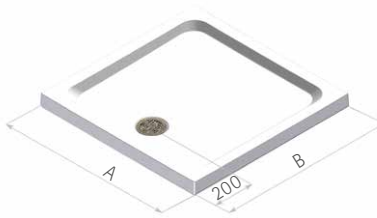
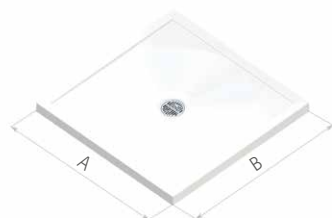
- Low Profile 40mm, 10mm Raised Threshold
- Stone resin, double acrylic cap
- Centre high-flow shower waste with Chrome flange and Stainless Steel grill
- Raised Tray version optional with adjustable legs and front panel in white only. Adds 100mm to height. Recess add £74, Corner add £115 ex VAT
- Available in White (Standard); For Matt White, Matt Graphite and Pergamon add £73 ex VAT
- Matt White and Matt Graphite are certified DIN51097 A Anti Slip

### FINELINE

- Medium Profile 60mm, 35mm Raised Threshold
- Stone resin, double acrylic cap
- Supplied with adjustable legs
- Centre front high-flow shower waste with Chrome flange and Stainless Steel grill
- Available in White only
- Optional front panel in white only. Recess add £74, Corner add £115 ex VAT

### CONTINENTAL LINEAR

- Low Profile 40mm, 10mm Raised Threshold
- Stone resin, double acrylic cap
- Linear waste cover in choice of finishes - see page 79
- Raised Tray option with adjustable legs and panel to match tray. Adds 100mm to height. Recess add £74, Corner £115 ex VAT
- Available in White (Standard); For Matt White, Matt Graphite, Pergamon add £73 ex VAT
- Available without waste drilled, allowing choice of waste position or 2 wastes to drain up to 50L/min with brass slotted cover. Add 'W' to end of code for undrilled, and 'WF' with additional waste (surcharge £93), e.g. CLL900WFCP



A	B	CL	PRICE (EX. VAT)	PRICE (INC. VAT)
800	800	CL800	£252.00	£302.40
900	760	CL9076	£276.00	£331.20
900	800	CL9080	£281.00	£337.20
900	900	CL900	£296.00	£355.20
1000	800	CL1080	£306.00	£367.20
1000	900	CL1090	£313.00	£375.60
1000	1000	CL1000	£382.00	£458.40
1100	800	CL1180	£323.00	£387.60
1100	900	CL1190	£330.00	£396.00
1200	700	CL1270	£320.00	£384.00
1200	760	CL1276	£322.00	£386.40
1200	800	CL1280	£324.00	£388.80
1200	900	CL1290	£374.00	£448.80
1200	1000	CL1210*	£408.00	£489.60
1300	800	CL1380	£399.00	£478.80
1300	900	CL1390	£412.00	£494.40
1400	800	CL1480	£422.00	£506.40
1400	900	CL1490	£445.00	£534.00
1500	800	CL1580	£473.00	£567.60
1500	900	CL1590	£476.00	£571.20
1600	800	CL1680	£489.00	£586.80
1600	900	CL1690	£496.00	£595.20
1700	800	CL1780	£506.00	£607.20
1700	900	CL1790	£535.00	£642.00
1800	900	CL1890*	£566.00	£679.20

A	B	SN	PRICE (EX. VAT)	PRICE (INC. VAT)
697	697	SN700	£261.00	£313.20
754	754	SN760	£263.00	£315.60
797	797	SN800**	£278.00	£333.60
895	758	SN9076	£293.00	£351.60
895	795	SN9080	£301.00	£361.20
896	896	SN900**	£321.00	£385.20
998	998	SN1000	£380.00	£456.00
1050	796	SN1050	£336.00	£403.20
1200	700	SN1270	£329.00	£394.80
1194	758	SN1276	£358.00	£429.60
1200	797	SN1280**	£360.00	£432.00
1196	898	SN1290	£404.00	£484.80
1505	805	SN1580**	£477.00	£572.40
1500	900	SN1590	£491.00	£589.20
1700	700	SN1770	£472.00	£566.40
1700	800	SN1780	£512.00	£614.40
1700	900	SN1790	£543.00	£651.60
1800	800	SN1880	£553.00	£663.60

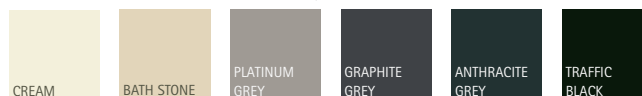
\*\*Available with 10mm tiling upstands, please see [www.matki.co.uk](http://www.matki.co.uk) for further details

A	B	ULL	PRICE (EX. VAT)	PRICE (INC. VAT)
800	800	CLL800	£325.00	£390.00
900	800	CLL9080	£345.00	£414.00
900	900	CLL900	£349.00	£418.80
1000	800	CLL1080	£353.00	£423.60
1200	800	CLL1280	£389.00	£466.80
1200	900	CLL1290	£414.00	£496.80
1300	900	CLL1390	£439.00	£526.80
1400	800	ULL1480	£449.00	£538.80
1400	900	CLL1490	£473.00	£567.60
1500	900	CLL1590	£499.00	£598.80
1700	900	CLL1790	£568.00	£681.60



Tray without waste drilled

POPULAR COLOUR OPTIONS FOR UNIVERSAL 40, UNIVERSAL LINEAR AND SLATE SHOWER TRAYS



\*Not available in Matt White, Matt Graphite or Pergamon

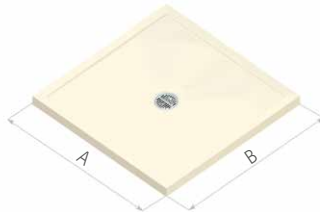
For waste options please see page 79





**UNIVERSAL 40**

- ▮ Low Profile 40mm, 10mm Raised Threshold
- ▮ Stone resin, gel coating
- ▮ Centre high-flow shower waste with Chrome flange and Stainless Steel grill
- ▮ UL900, UL1280, UL1290 and UL1680 available in semi matt finish
- ▮ Raised Tray version optional with adjustable legs and front panel in colour to match tray. Adds 100mm to height. Recess add £74, Corner add £115 ex VAT
- 🌈 Available in any colour via RAL or sample matching

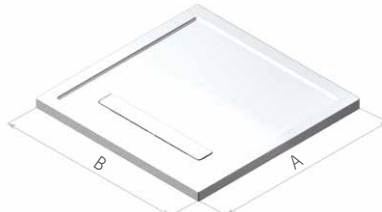


A	B	UL	PRICE (EX. VAT)	PRICE (INC. VAT)
760	760	<b>UL760</b>	£295.00	£354.00
800	800	<b>UL800</b>	£306.00	£367.20
900	900	<b>UL900</b>	£347.00	£416.40
1200	800	<b>UL1280</b>	£376.00	£451.20
1200	900	<b>UL1290</b>	£424.00	£508.80
1400	900	<b>UL1490</b>	£494.00	£592.80
1500	900	<b>UL1590</b>	£524.00	£628.80
1600	800	<b>UL1680</b>	£535.00	£642.00



**UNIVERSAL LINEAR**

- ▮ Low Profile 40mm, 10mm Raised Threshold
- ▮ Stone resin, gel coating
- ▮ Linear waste cover in colour to match tray (Standard) or in choice of finishes - see below
- ▮ Raised Tray option with adjustable legs and panel to match tray. Adds 100mm to height. Recess add £74, Corner £115 ex VAT
- 🌈 Available in any colour via RAL or sample matching
- ▮ Available without waste drilled, allowing choice of waste position or 2 wastes to drain up to 50L/min with brass slotted cover. Add 'W' to end of code for undrilled, and 'WF' with additional waste (surcharge £93), e.g. ULL900WFPC



A	B	ULL	PRICE (EX. VAT)	PRICE (INC. VAT)
900	800	<b>ULL9080</b>	£391.00	£469.20
900	900	<b>ULL900</b>	£394.00	£472.80
1000	800	<b>ULL1080</b>	£399.00	£478.80
1200	800	<b>ULL1280</b>	£442.00	£530.40
1200	900	<b>ULL1290</b>	£467.00	£560.40
1300	900	<b>ULL1390</b>	£494.00	£592.80
1400	800	<b>ULL1480</b>	£505.00	£606.00
1400	900	<b>ULL1490</b>	£530.00	£636.00
1500	900	<b>ULL1590</b>	£557.00	£668.40
1700	900	<b>ULL1790</b>	£635.00	£762.00



**SLATE**

- ▮ Low Profile 40mm, 10mm+ Raised Threshold
- ▮ Stone resin, gel coating
- ▮ Centre side shower waste with cover in matching colour
- ▮ Raised Tray version optional with adjustable legs and front panel in colour to match tray. Adds 100mm to height. Recess add £74, Corner add £115 ex VAT
- 🌈 Available in any colour via RAL or sample matching
- ▮ Textured finish modelled on real slate
- ▮ Certified DIN51097 A Anti Slip

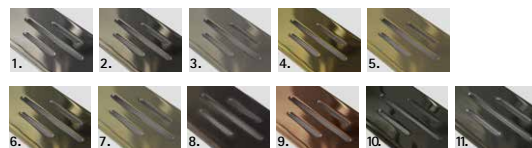


A	B	SL	PRICE (EX. VAT)	PRICE (INC. VAT)
905	905	<b>SL900</b>	£416.00	£499.20
1205	805	<b>SL1280</b>	£458.00	£549.60
1205	905	<b>SL1290</b>	£476.00	£571.20
1405	805	<b>SL1480</b>	£530.00	£636.00
1505	805	<b>SL1580</b>	£572.00	£686.40
1502	905	<b>SL1590</b>	£588.00	£705.60
1605	805	<b>SL1680</b>	£597.00	£716.40
1700	905	<b>SL1790</b>	£609.00	£730.80

**WASTE COLOURS AND FINISHES**

WASTE COVER FINISH OPTIONS FOR CONTINENTAL LINEAR AND UNIVERSAL LINEAR:

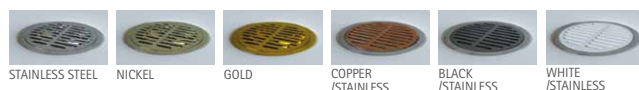
- White (WH) (Standard) - CLL only -
- Colour to match tray (Standard) - ULL only -
- Polished Chrome (CP), Living Brass\* (LB) £154 ex VAT
- Polished Nickel (NP), Living Copper\* (LC) £170 ex VAT
- Brushed Nickel (NB), Brushed Brass\* (BB) £177 ex VAT
- Polished Gold (MG), Black Chrome (XP), Aged Brass\* (AB) £200 ex VAT
- Brushed Gold (GB), Brushed Black Chrome (XB) £208 ex VAT



1. Chrome (CP), 2. Nickel (NP), 3. Brushed Nickel (NB), 4. Gold (MG), 5. Brushed Gold (GB), 6. Living Brass (LB), 7. Brushed Brass (BB), 8. Aged Brass (AB), 9. Living Copper (LC), 10. Black Chrome (XP), 11. Brushed Black Chrome (XB).

WASTE GRILL OPTIONS FOR CONTINENTAL, UNIVERSAL 40 AND FINELINE

High-flow shower waste with Chrome flange and Stainless Steel grill as standard, see alternative finishes, right and quote on order adding a supplement of £39 excluding VAT for these finishes.

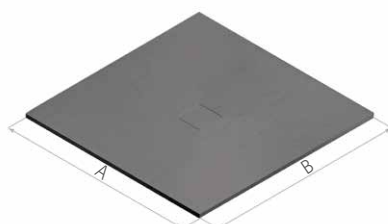


\*Living finishes are unlacquered and will change over time in unpredictable ways. Please see Care & Maintenance section of Matki website for more details



**SLATE FLOOR**

- ▮ Flush to Floor fitting, 38mm Depth
- ▮ Stone resin, gel coating
- ▮ Centre shower waste with cover in matching colour
- ▮ Available in any colour via RAL or sample matching
- ▮ Textured finish modelled on real slate
- ▮ Matt white and Matt Graphite are certified DIN51097 A Anti Slip
- ▮ Choose from 700, 760, 800, 900, 1000 width dimension at same price, please state width required clearly on order. For alternative lengths, widths and waste locations if possible, add £161 ex VAT
- ▮ Slotted Waste Cover for enhanced drainage available at £84 ex VAT

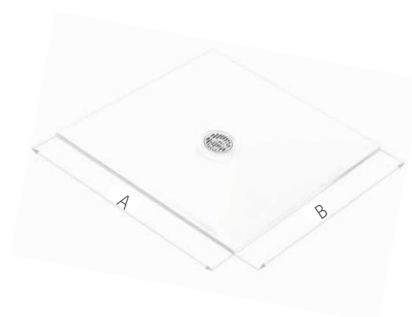


A	B	SLF	PRICE (EX. VAT)	PRICE (INC. VAT)
760	700-760	SLF760	£457.00	£548.40
800	700-800	SLF800	£457.00	£548.40
900	700-900	SLF900	£457.00	£548.40
1000	700-1000	SLF1000	£478.00	£573.60
1100	700-1000	SLF1100	£508.00	£609.60
1200	700-1000	SLF1200	£508.00	£609.60
1300	700-1000	SLF1300	£582.00	£698.40
1400	700-1000	SLF1400	£582.00	£698.40
1500	700-1000	SLF1500	£582.00	£698.40
1600	700-1000	SLF1600	£655.00	£786.00
1700	700-1000	SLF1700	£655.00	£786.00
1800	700-1000	SLF1800	£655.00	£786.00
1900	700-1000	SLF1900	£847.00	£1,016.40
2000	700-1000	SLF2000	£847.00	£1,016.40



**CONTINENTAL 30**

- ▮ Standard or Flush to Floor fitting, 30mm Depth
- ▮ Stone resin, double acrylic cap
- ▮ Centre high-flow shower waste with Chrome flange with Stainless Steel grill
- ▮ Available in White (Standard); For Matt White, Matt Graphite, Pergamon add £73 ex VAT
- ▮ Matt White and Matt Graphite are certified DIN51097 A Anti Slip
- ▮ Tiling flange now removed



A	B	FL	PRICE (EX. VAT)	PRICE (INC. VAT)
800	800	FL800	£298.00	£357.60
900	800	FL9080	£311.00	£373.20
900	900	FL900	£330.00	£396.00
1200	800	FL1280	£354.00	£424.80
1200	900	FL1290	£366.00	£439.20
1500	900	FL1590	£461.00	£553.20
1700	900	FL1790	£490.00	£588.00

Matki Shower Floors are designed for a flush, flat to floor appearance. If the showering area is not fully enclosed water may escape the edges of the Matki Shower floor. This should be considered during design and installation in a fully tanked and prepared wet room area.

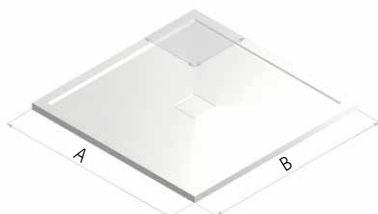
For waste options please see page 79



MP900

### PREFERENCE TRAY

- Low Profile 30mm-35mm, 10mm Raised Threshold
- Centre shower waste with cover in Preference material



A	B	MP	PRICE (EX. VAT)	PRICE (INC. VAT)
800	800	MP800	£485.00	£582.00
900	900	MP900	£532.00	£638.40
1000	1000	MP1000	£606.00	£727.20
1200	900	MP1290	£619.00	£742.80
1500	900	MP1590	£740.00	£888.00
*900	900	MP900 MTM	£794.00	£952.80
*1000	1050	MP1000 MTM	£909.00	£1,090.80
*1350	1050	MP1315 MTM	£1,072.00	£1,286.40
*1350	1350	MP1350 MTM	£1,294.00	£1,552.80
*1800	1150	MP1800 MTM	£1,440.00	£1,728.00
*2050	1150	MP2000 MTM	£1,482.00	£1,778.40

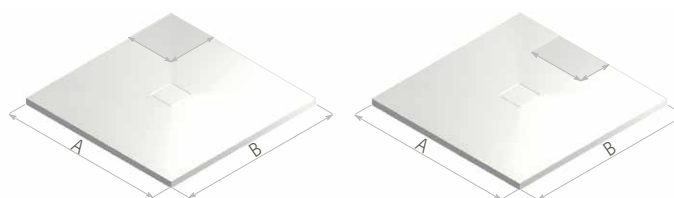
\*Made to Measure up to size



MF1290

### PREFERENCE FLOOR

- Flush to floor fitting, 20mm-25mm Depth
- Centre shower waste with cover in Preference material



A	B	MF	PRICE (EX. VAT)	PRICE (INC. VAT)
760	700 - 760	MF760 MTM	£558.00	£669.60
800	700 - 800	MF800 MTM	£558.00	£669.60
900	700 - 900	MF900 MTM	£558.00	£669.60
1000	700 - 1000	MF1000 MTM	£656.00	£787.20
1100	700 - 1100	MF1100 MTM	£818.00	£981.60
1200	700 - 1200	MF1200 MTM	£818.00	£981.60
1300	700 - 1300	MF1300 MTM	£956.00	£1,147.20
1400	700 - 1100	MF1400 MTM	£854.00	£1,024.80
1500	700 - 1100	MF1500 MTM	£1,004.00	£1,204.80
1600	700 - 1100	MF1600 MTM	£1,004.00	£1,204.80
1700	700 - 1100	MF1700 MTM	£1,057.00	£1,268.40
1800	700 - 1100	MF1800 MTM	£1,086.00	£1,303.20
1900	700 - 1100	MF1900 MTM	£1,122.00	£1,346.40
2000	700 - 1100	MF2000 MTM	£1,152.00	£1,382.40

### PREFERENCE MATERIAL PROPERTIES

- Solid surface, semi matt texture
- Made from ground marble
- Available in White only

### PREFERENCE SAFETY AND DURABILITY

- Certified DIN51097 B Anti Slip and PTV 36+ Low Slip Potential
- Easy to clean, durable and fully restorable surface

### PREFERENCE BESPOKE

- MP any size up to 2050 x 1150mm; MF 2000 x 1100mm
- Shapes: Square, Rectangular, Angled Sides, Quintesse, Curved, Cut-outs
- Waste position can be moved centrally to avoid joists



Slotted Waste Cover for enhanced drainage available at £84 ex VAT

For more information on Made to Measure Shower Trays please contact the Matki Bespoke Team [bespoke.department@matki.co.uk](mailto:bespoke.department@matki.co.uk) 01454 322888



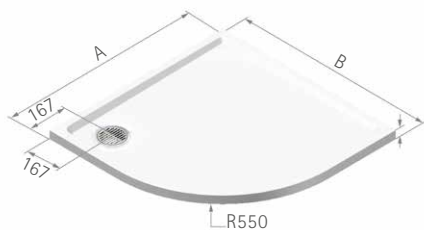
## 82. CURVED SHOWER TRAYS



CLC1290

### CONTINENTAL 40 CURVED

- 40mm Height, 10mm Raised Threshold
- Stone resin, double acrylic cap
- High-flow shower waste with Chrome flange and Stainless Steel grill as standard
- Raised Tray version optional with adjustable legs and front panel in White only. Adds 100mm to height. Add £115 ex VAT
- Available in White (Standard); For Matt White, Matt Graphite, Pergamon add £73 ex VAT
- Matt White and Matt Graphite are certified DIN51097 A Anti-Slip



A	B	CLC	PRICE (EX. VAT)	PRICE (INC. VAT)
800	800	CLC800	£365.00	£438.00
900	900	CLC900	£413.00	£495.60
800	1000	CLC1080LH**	£408.00	£489.60
1000	800	CLC1080RH	£408.00	£489.60
900	1000	CLC1090LH**	£433.00	£519.60
1000	900	CLC1090RH	£433.00	£519.60
800	1200	CLC1280LH**	£451.00	£541.20
1200	800	CLC1280RH	£451.00	£541.20
900	1200	CLC1290LH**	£466.00	£559.20
1200	900	CLC1290RH	£466.00	£559.20
900	1500	CLC1590LH**	£489.00	£586.80
1500	900	CLC1590RH	£489.00	£586.80

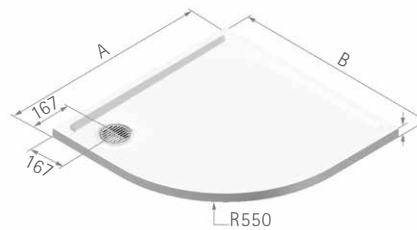
\*\* Waste is located in RH corner for this model, other models have waste outlet in LH corner, see illustrations. For waste options please see page 79



ULC1290

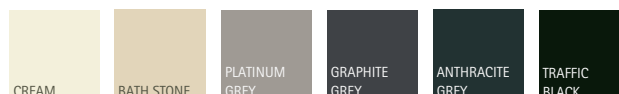
### UNIVERSAL 40 CURVED

- 40mm Height, 10mm Raised Threshold
- Stone resin, gel coating
- High-flow shower waste with Chrome flange and Stainless Steel grill as standard
- Raised Tray version optional with adjustable legs and front panel in colour to match tray. Adds 100mm to height. Add £115 ex VAT
- Available in any colour via RAL or sample matching



A	B	ULC	PRICE (EX. VAT)	PRICE (INC. VAT)
900	900	ULC900	£413.00	£495.60
900	1200	ULC1290LH**	£466.00	£559.20
1200	900	ULC1290RH	£466.00	£559.20
900	1500	ULC1590LH**	£489.00	£586.80
1500	900	ULC1590RH	£489.00	£586.80

POPULAR COLOUR OPTIONS FOR UNIVERSAL 40 CURVED AND UNIVERSAL 40 QUINTESS shower trays



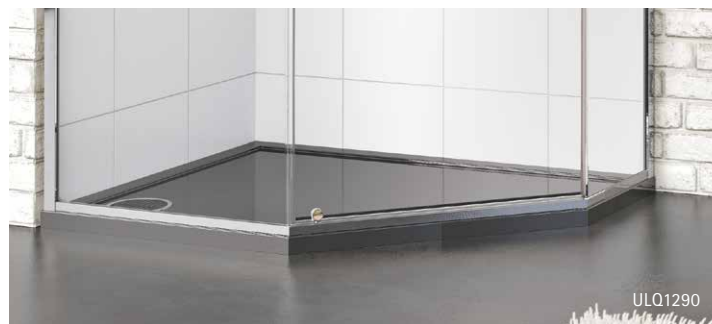


**CONTINENTAL 40 QUINTESSE**

- ▮ 40mm Height, 10mm Raised Threshold
- ▮ Stone resin, double acrylic cap
- ▮ High-flow shower waste with Chrome flange and Stainless Steel grill as standard
- ▮ Raised Tray version optional with adjustable legs and front panel in White only. Adds 100mm to height. Add £115 ex VAT
- ▮ Available in White (Standard); For Matt White, Matt Graphite, Pergamon add £73 ex VAT
- ▮ Matt White and Matt Graphite are certified DIN51097 A Anti-Slip

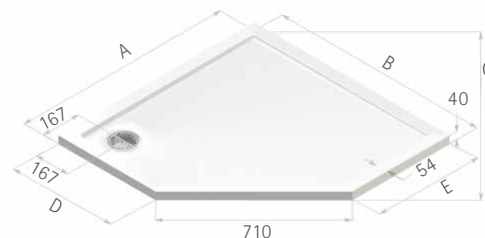


A	B	C	D	E	CLQ	PRICE (EX. VAT)	PRICE (INC. VAT)
900	900	918	398	398	CLQ900	£377.00	£452.40
1000	1000	1058	498	498	CLQ1000	£417.00	£500.40
900	1200	1129	698	398	CLQ1290LH	£420.00	£504.00
1200	900	1129	398	698	CLQ1290RH**	£420.00	£504.00
900	1500	1341	998	398	CLQ1590LH	£459.00	£550.80
1500	900	1341	398	998	CLQ1590RH**	£459.00	£550.80



**UNIVERSAL 40 QUINTESSE**

- ▮ 40mm Height, 10mm Raised Threshold
- ▮ Stone resin, gel coating
- ▮ High-flow shower waste with Chrome flange and Stainless Steel grill as standard
- ▮ Raised Tray version optional with adjustable legs and front panel in colour to match tray. Adds 100mm to height. Add £115 ex VAT
- 🌈 Available in any colour via RAL or sample matching



A	B	C	D	E	ULQ	PRICE (EX. VAT)	PRICE (INC. VAT)
900	900	918	398	398	ULQ900	£377.00	£452.40
1000	1000	1058	498	498	ULQ1000	£417.00	£500.40
900	1200	1129	698	398	ULQ1290LH	£420.00	£504.00
1200	900	1129	398	698	ULQ1290RH**	£420.00	£504.00
900	1500	1341	998	398	ULQ1590LH	£459.00	£550.80
1500	900	1341	398	998	ULQ1590RH**	£459.00	£550.80

\*\* Waste is located in RH corner for this model, other models have waste outlet in LH corner, see illustrations  
For waste options please see page 79

## MATKI SHOWERING GENERAL INFORMATION

EauZone is a luxury collection of Shower Enclosures, Wet Room Panels and Bath Screens in 10mm Safety Glass. It is available in a wide range of standard sizes and in custom, bespoke sizes. Due to the number of options available, it is strongly recommended that you visit a Matki Centre to view a display of the product you are interested in. You can find your nearest Matki Centre by visiting the Where To Buy section on our website and inputting your postcode.

The Matki website also includes an online EauZone Configuration Tool and a Bespoke Section to help you view the whole range of possibilities on offer. If you have any questions please do not hesitate to call us on our Customer Helpline.

All images, finishes and colours featured in this brochure are for representation purposes only. Finishes and colours may vary across materials.

### MATKI 10 YEAR GUARANTEE

Matki shower surrounds and shower trays are covered by a 10-year guarantee against parts failure, with the initial two-year period also having labour cost cover. Gold and Nickel-plated parts and all other special finishes and Matki Glass Guard are guaranteed for the initial two-year period only. Living Brass, Brushed Brass and Aged Brass finishes are not covered by the Guarantee. Matki Elixir and Matki Swadling thermostatic shower mixers and accessories and Matki Fastflow shower wastes are guaranteed for five years. The 10-year Matki guarantee is subject to registration and the issuing of a Guarantee number. It is subject to the terms and conditions stated on the Matki website.

### MATKI GLASS GUARD

Matki Glass Guard is an invisible glass surface coating which helps to reduce limescale and hard water deposits to make cleaning of the glass so much easier.

### WATER SOFTENERS AND GLASS GUARD

Certain types of water softeners increase the alkalinity of the water due to a carry-over of Chloride during re-generation which can cause aggressive water spots on both untreated and Glass Guarded glass. If using a water softener we recommend a two-cylinder machine with automatic re-generation instead of a timer.

If a single-cylinder water softener with timer is already installed it is recommended that after each shower excess water is removed from the glass with a squeegee or with a micro-fibre cloth.

### PRICES

Matki policy is one of continual improvement and we reserve the right to change specification, colour and prices without notice.

Matki PLC, Churchward Road, Yate, Bristol BS37 5PL

Tel: 01454 322 888 Email: [helpline@matki.co.uk](mailto:helpline@matki.co.uk)

[www.matki.co.uk](http://www.matki.co.uk)

Matki Shower Doors, Surrounds, and Trays are produced in accordance with BS EN ISO 9001:2000 Quality Assurance Systems.

Preference, Slate and Continental Matt White are Certified Anti Slip by DIN51097 and PTV standards. See individual product pages.

Matki, Swadling, EauZone, EauZone Plus, ONE, Eleganza, Classica, Colonade, Elixir, Finline, Illusion, Inswing, Mirage, Quintesse, Radiance, Eclipse and Preference are Registered Trade Marks.

All other Trade Marks featured, applied for. All rights reserved.

Design Rights Reserved: Elixir Hand Shower Duo, Radius-20 Wet Room Panel.

Colonade UK Patent No. GB2289 302.B Design Right and Copyright.

Matki Plc. All rights reserved.

Classica UK Patent No. GB2351299B.

Elixir shower mixer patent applied for.

EauZone Hinge patent no. UK: 2470778.

As part of the continuing policy of product improvement and design, we reserve the right to amend specification, colours and prices without prior notice.

Thank you to Domus Group [www.domusgroup.com](http://www.domusgroup.com) for the wonderful tiles featured on the front cover and pages 2 to 5, and to The Sodbury Florist [www.sodburyflorist.co.uk](http://www.sodburyflorist.co.uk) for the beautiful plants and flowers. Thank you to Ashton and Bentley for the Basin shown on page 20. Image featured on page 45 is a bespoke display at The Bathroom Company in Edinburgh.

Matki continuously develop new products, sizes, ideas and innovations and we recommend that you visit our website [www.matki.co.uk/matki-news](http://www.matki.co.uk/matki-news) for the latest updates.



**UK  
CA** **matki**  
10 YEAR GUARANTEE



BSI certificate number: FM 14200

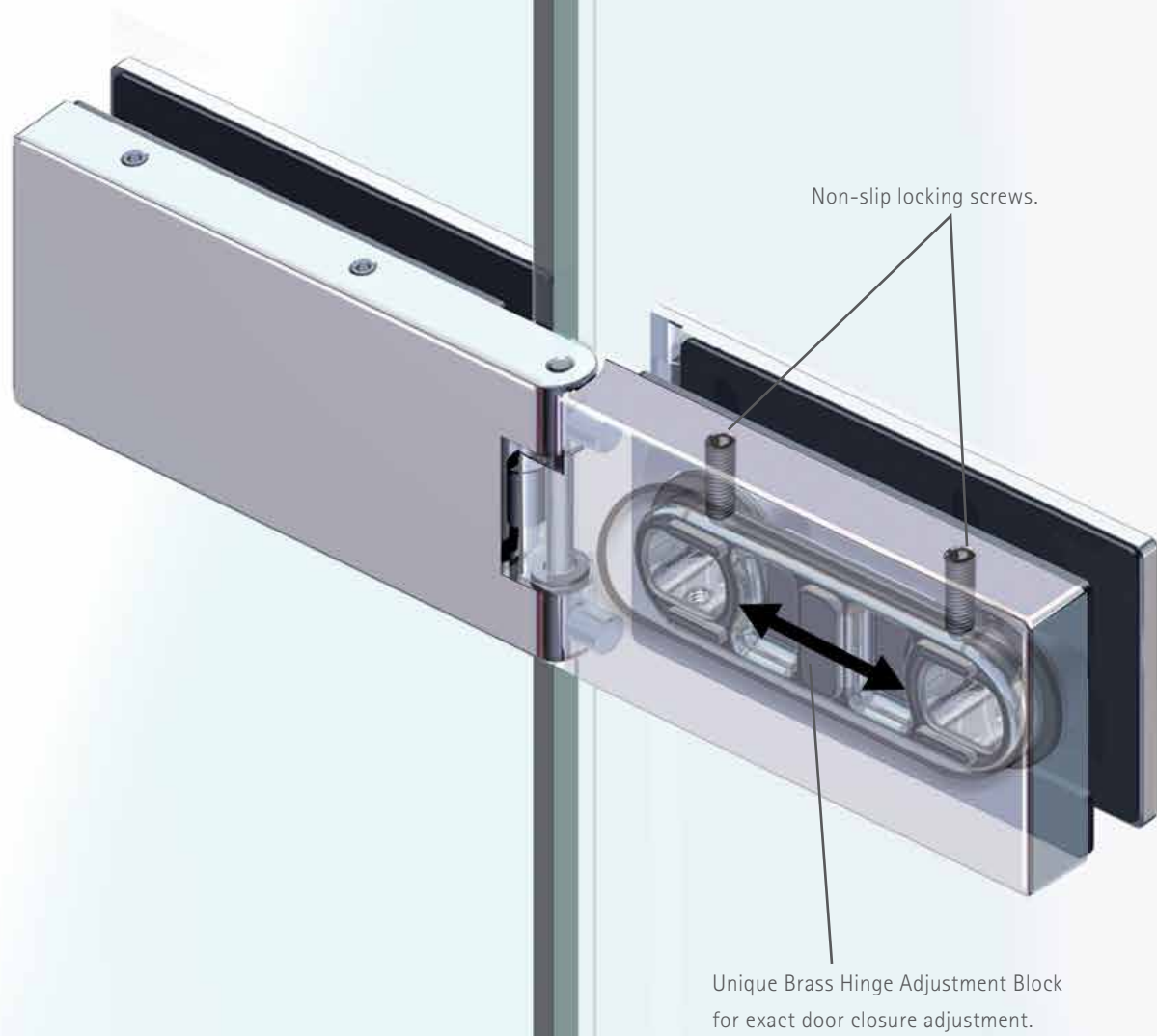
**WaterAid**

Charity registration number 288701 (England and Wales)  
and SC039479 (Scotland). Supported by the Matki Charity Fund.



## NON-SLIP HINGE DETAILS\*

All Eauzone Shower Doors and Bath Screens are fitted with Matki's unique non-slip hinge assemblies\*, retaining perfect adjustment of the door glass in use.



# matki

Matki PLC, Churchward Road, Yate, Bristol BS37 5PL

Tel: 01454 322 888 Email: [helpline@matki.co.uk](mailto:helpline@matki.co.uk)

[www.matki.co.uk](http://www.matki.co.uk)

All Matki products are designed  
and produced in the UK

