

MIRROR CABINETS



Art.-Nr.: 03507/030301 Katalog Spiegelschränke, englisch UK, 09/17

FOREWORD 4-5

LED TECHNOLOGY 6-11

**MIRROR CABINETS WITH
LED LIGHTING SYSTEMS** 12-51

EDITION 400* 14-21

ROYAL LUMOS 22-27

ROYAL REFLEX.2* 28-31

ROYAL L1 32-37

ROYAL 15 38-41

ROYAL UNIVERSE 42-45

ROYAL MATCH 46-51

**MIRROR CABINETS WITH
CONVENTIONAL LIGHTING
SYSTEMS** 52-69

EDITION 300* 52-55

ROYAL 60* 56-59

ROYAL T1 INTEGRAL 60-61

ROYAL INTEGRAL 62-63

ROYAL 30 64-65

ROYAL T1 66-69

PRODUCT OVERVIEW 70-87

*also available with matching bathroom furniture

A FASCINATION FOR THE BATHROOM



Hartmut Dalheimer, Managing Director



Engelbert Himrich, Managing Partner



Sensuousness and sensibility – KEUCO’s passion for the bathroom runs through its veins, and this is evident in our products. A KEUCO bathroom awakens the emotions. It is an intimate place of well-being. It conveys elegance and luxury, and it combines aesthetics, ergonomics and functionality.

In no other room is this challenge more exciting and demanding than the bathroom. That is why this fascination continues to drive us forward. Since its founding in the year 1953, our company, which is still family-run today, has undergone a rapid and sustained transformation. From market leader for high quality bathroom accessories, KEUCO has evolved into the brand for the bathroom, with a wide assortment of furniture, fittings, accessories and mirror cabinets and from our early days we focused on concepts offering complete bathroom furnishings.

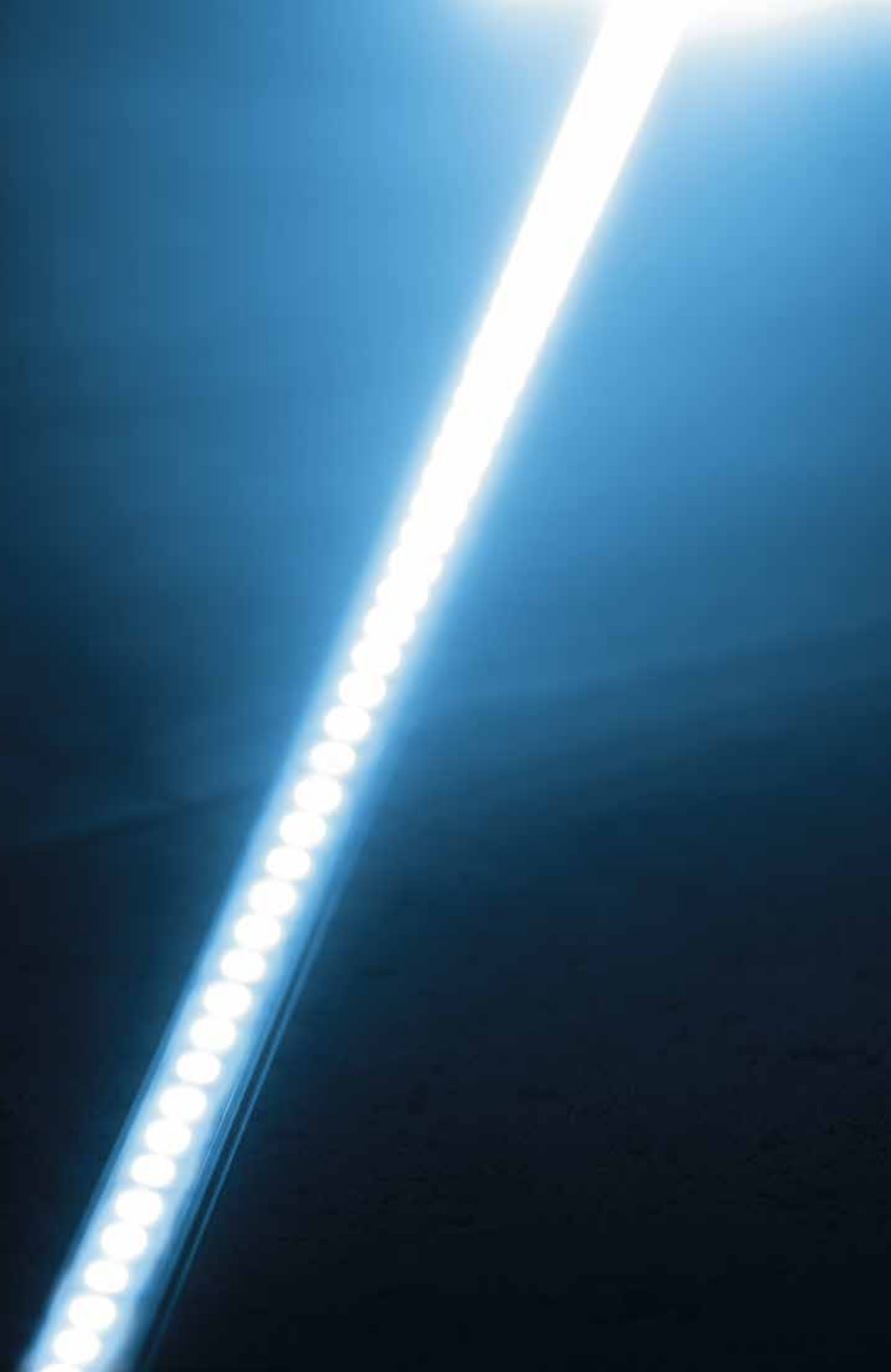
Important factors contributing to our success are the contemporary, technically innovative products, the highest standard of quality, a clear orientation towards design, and state-of-the-art manufacturing facilities. Today, KEUCO products are sold around the world, and are market leaders in many areas. KEUCO products are the result of intensive development, the use of only the best materials, and most precise workmanship. We combine high-tech production technology and elaborate craftsmanship to achieve optimum results. KEUCO quality sets standards: Our products will convince you by their immaculate surfaces, maximum longevity, and perfect functionality. Each product is examined individually before being dispatched to our customers.

At KEUCO, the subject of design already played a pivotal role long before it even became a general topic of conversation. Our understanding of design involves striving to achieve classic-modern aesthetics that retain their contemporary appearance, even after many years of use. Whether designed in-house or in cooperation with internationally recognized designers – KEUCO products are regularly distinguished by renowned awards.

But timeless design and long-lasting product quality are only two aspects of our philosophy where sustainability is concerned. Equally important are a responsible company management, and production processes which are environmentally friendly. One of our contributions is an own water conditioning system for our electroplating plant, for example. In our opinion the label “Made in Germany” represents a commitment to a company management that aims to secure jobs in the long term.

KEUCO products are made in our own production plants in Hemer, Gütersloh and Bünde. Inland production provides us with a close proximity that is essential, so that we can further develop and utilize the know-how of our employees on a long term basis, and so achieve seamless quality management. And that makes “Made in Germany” a promise of quality.

HOW INNOVATION IS COMING TO LIGHTING



LED TECHNOLOGY

BALANCE BETWEEN LIGHT AND PASSION

Admittedly, everyone knows about LEDs, but not everyone is as knowledgeable as another. Together with our partners, we have developed outstanding and seriously future-oriented LED lighting systems for mirror cabinets, which are setting new standards: Long life and elegance are the top priority – so that the lighting of KEUCO mirror cabinets and light mirrors shine evenly for a long time, remains harmonious and that every look in the mirror is a unique experience. Light cannot be reinvented, but it can be optimised. Therefore, the latest LED systems are adding the gentle touch to conventional mirror cabinet lighting of the past.



ELEGANCE COMBINED WITH LONG LIFE

LED modules are complex and unique: Each individual diode has minimally varying values in colour temperature and colour integrity, and is thus an individual piece. Consequently, sorting individual diodes by these values is particularly important. It goes to say that homogeneity and colour integrity are absolute quality features for LED lighting devices. Every time you go into the bathroom in the morning and every glance in the mirror will make you realise that LED lighting devices deserve the complex production procedure from which they result.

LED modules deliver a broad light spectrum: from warm white and particularly homely at 2700 Kelvin for an atmospheric bathroom environment to daylight white at 6500 Kelvin for daily personal hygiene. The intuitive control over the separately developed rotary dimmer or the intelligent sensor controller mean that the light intensity and light colour are continuously variable.

In addition to the very low energy consumption, LED lighting is characterised by its outstanding longevity: With at least 30,000 operating hours, modern LEDs provide light for a long time. Should it happen that one of your LED lighting devices has to be replaced, it is child's play for the man skilled in the art: KEUCO's LED modules are not glued and can therefore be replaced.

Where service is concerned, KEUCO sets benchmarks, just as with quality: 5 year warranty and 10 years guaranteed spare parts supply for LED modules.



BEAUTIFUL OUTSIDE, SMART INSIDE

Our passion for mirror cabinets has many causes. One of them is the fact they are veritable space savers. They create room for a large quantity of bathroom accessories, without wasting precious space in the bathroom. This is where KEUCO has always had an eye for optimum convenience at and around the washbasin. Various height and width formats, various methods of opening – upwards or with one or several doors – vertical or horizontal lighting, mirrors inside and out, flexible interior features with numerous glass or aluminium shelves, and optionally with drawers and the ability to mount the mirror cabinet on or in the wall. With so many different possibilities, we can contribute to fulfilling every wish.

Please note: All switches and sockets pictured in this brochure are continental fittings.

MIRROR CABINETS WITH LED LIGHTING SYSTEMS

LED LIGHTING CONCEPTS



EDITION 400

STORAGE SPACE MEETS
LIGHT TECHNOLOGY

The EDITION 400 mirror cabinet is impressive, with its timeless beauty and technical functionality. Its intelligent sensor control, light intensity and light colour are continuously variable – from warm white light at 2700 Kelvin to bright white daylight at 6500 Kelvin. This is how the person looking into the mirror is reflected in the best light according to the time of day and individual preference.

A mirror heating is incorporated in the slim doors. This practical extra will prevent misting of the mirror cabinet after showering. Extra clever: The sensor-controlled heating switches off again automatically 20 minutes after switching on.



EDITION 400

Available in three sizes ranging from 700 to 1400 mm, EDITION 400 mirror cabinets offer individual design possibilities for different bathrooms, both large and small. With the different types of surface and in-wall mounting possibilities, KEUCO cabinets cater for a generous amount of planning freedom for modern bathroom architecture.

The light reflection from the back wall and insides of the doors, where the clear interior lighting, the extra storage compartment and the integrated power points make the mirror cabinet a sensible and sensuous component of your bathroom.



INTELLIGENT EVEN BEHIND THE SCENES



A clear case of aesthetics: The in-wall mirror cabinet is let into the wall in a very clever way and blends with the room. At a first glance, the delicate silhouette does not reveal the secret of the generous depth of its interior.

Both light intensity and light temperature from daylight to warming light can be controlled in an easy-going and continuous manner, so that you will happily spend a little more time in front of this mirror.



ROYAL LUMOS

ONLY ONE LIGHT MATTERS: THE RIGHT ONE

Is that still classed as a mirror or is it actually a piece of art? In the case of the ROYAL LUMOS mirror cabinet, that is the question that comes to mind. With its illuminated frame on three sides it appears to slightly hover. Good that the shelf compartment makes it ideal for daily use and offers a perfect place to display all your favourite items in a prominent position.

The ROYAL LUMOS, developed by the blisse-zetsche design agency in Munich, has three separate LED light sources: The translucent frame serves as the main source of lighting, which establishes the right light for the room and the face. The washbasin lighting radiating downwards adds accents of atmospheric lighting on the fitting and washbasin. The indirect lighting makes the shelf compartment a functional and aesthetic highlight with its mirrored back.

The colour and intensity of the high performance LEDs behind the surrounding translucent frame can be adjusted to an infinite number of levels: From a daylight white light of 6500 Kelvin, ideal for daily care, to a warm-white light of 2700 Kelvin, for a perfect evening makeup or an atmospheric bathing ambience. The intuitive control panel allows individual control of the LEDs. And yet again KEUCO sets the standard with this specially developed lighting concept.



Warm-white
light colour



Daylight-white
light colour



Washbasin
lighting (bottom)



Main lighting
(top)



On/Off



PLAINLY AMAZING



Even the interior of the ROYAL LUMOS mirror cabinet sparkles with design and reflects quality made in Germany. Prominently featured in the design is the integrated shelf compartment, giving priority to the practical. Even with the mirror doors closed, it still allows easy access to frequently-used utensils. A premium inlay made of linoleum offers a scratch-free shelf surface for watches or jewellery.

Basin mixer PLAN S and lotion dispenser PLAN

Please note: All switches and sockets pictured in this brochure are continental fittings.

ROYAL LUMOS

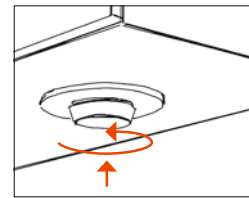


The ROYAL LUMOS is outstanding. It can be installed as a classic on-wall mirror cabinet or as an in-wall model, partially recessed.

The interior features of both are of the highest quality: Rear and side walls as well as revolving doors have mirrored inner surfaces and the height of the glass shelves can be adjusted. The soft-close hinges mean that the doors shut lightly and softly. Available in six sizes ranging from 650 to 1400 mm, it opens up individual design possibilities for different bathrooms, both large and small. Depending on the width it is fitted with up to three mirror doors and is perfect for both single or double washbasins.



EVOLUTION OF LIGHT



The credo, "set to become a classic", is relevant for the ROYAL REFLEX.2 mirror cabinets because in each case uncompromising appearance rubs shoulders with innovative technology and functional features.

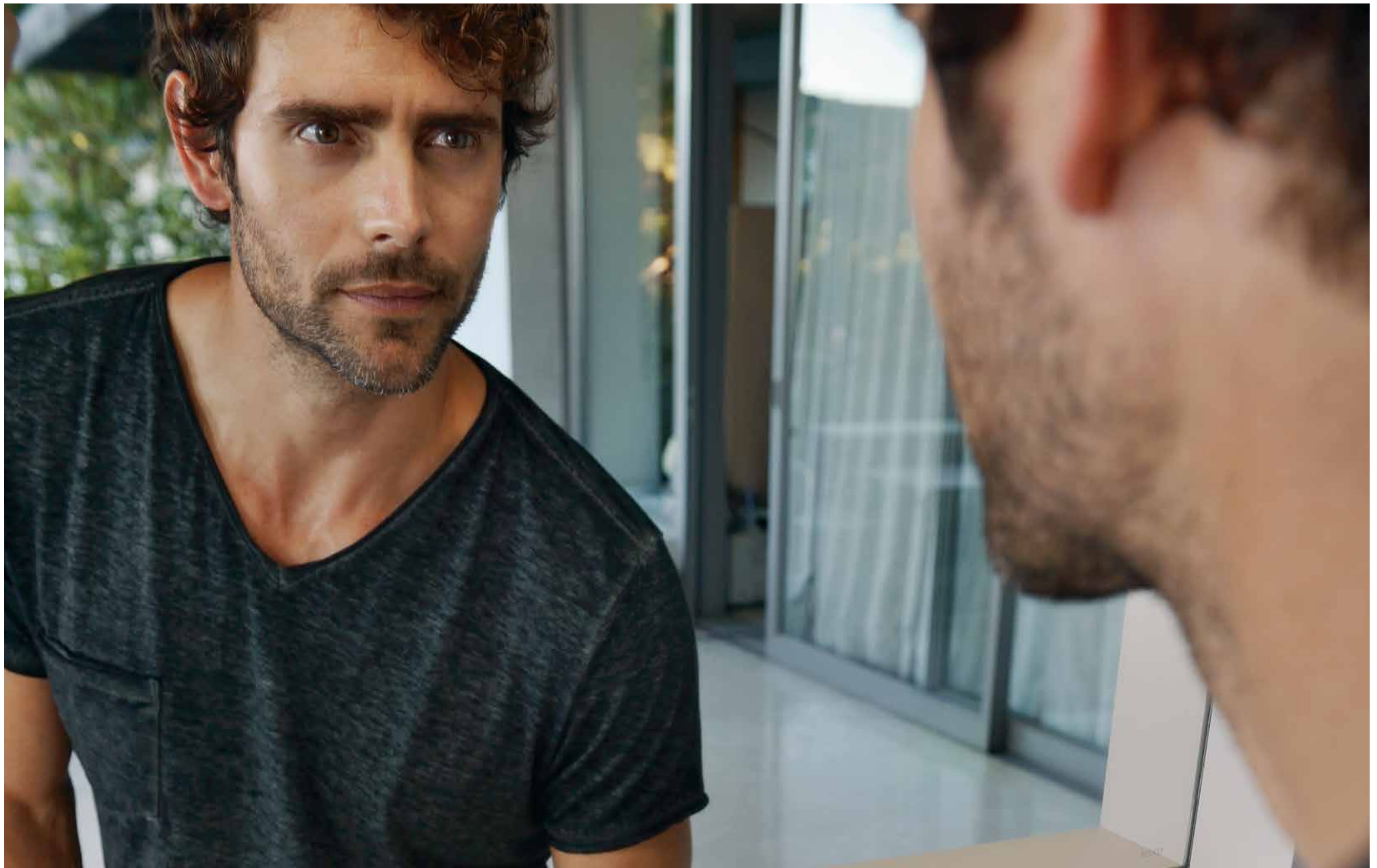
The very latest in LED technology provides the lighting. Thanks to the high level of brightness and colour fidelity, the lamps radiate a cosy light with a warm-white luminous colour of 3000 Kelvin. On the mirror cabinet they can be found in the front lighting, and on the light mirror in the lights on the sides. New in both is the additional light source: The washbasin lighting establishes the perfect illumination for the fitting and washbasin.

In each case the LEDs are controlled by an innovative, intelligent rotary dimmer. You can adjust the light intensity to any setting and choose between three different lighting modes: Washbasin lighting, front or side lighting, or both light sources together. Naturally the new mirror cabinets and light mirrors still match all ROYAL REFLEX washbasin formats: From the small 500 mm model for the guest WC through to the 1300 mm model for double washbasins – in this case with two light sources to illuminate the washbasin.

Please note: All switches and sockets pictured in this brochure are continental fittings.

Basin mixer and lotion dispenser ELEGANCE





LIGHT, JUST AS YOU NEED IT



Naturally, it isn't possible to re-invent light. But it is possible to optimise it aesthetically and practically for new applications. And that is exactly what we have done with the innovative ROYAL L1 mirror cabinet series. Come and enjoy a bathroom mirror cabinet with us, with three modern LED light sources and a completely new kind of intelligent rotary dimmer. It will allow you to create the perfect atmosphere of light in the bathroom for every occasion.

The generous yet elegant overhead LED light is literally the highlight of the new ROYAL L1 mirror cabinet. It is enthroned above the fully-mirrored cabinet body and radiates a warm-white light of 3000 Kelvin. The new washbasin lighting, concealed on the underside of the body, lets the fitting sparkle in the perfect light. And the integrated wall lighting surrounds the mirror cabinet with an extraordinary aura. All three light sources impress with an extremely high level of brightness and colour fidelity.



Not only does the ROYAL L1 mirror cabinet capture glances, but it also knows how to direct them perfectly, too. One reason for this is the three light modes, which can be adjusted to any setting with the help of the intelligent rotary dimmer. But another reason is the many proven details in the fittings, which allow you to make optimum use of the storage space. The glass shelves can be adjusted individually to different heights. Optional anodised aluminium interior drawers are also available to choose from.



The ROYAL L1 comes in six sizes from 500 mm to 1300 mm, with one, two or three doors with mirrors on both sides – so it is compatible with virtually every standard washbasin format. Starting at a length of 1200 mm the washbasin lighting is designed for double washbasins with two fittings – to highlight chrome surfaces and uniquely designed forms in a particularly prominent way.

The rotary dimmer can always be found to the right on the underside of the cabinet body. Its intuitive operation allows adjustment of the light mode and intensity by pressing and rotating. Both settings are saved when it is switched off and automatically activated again the next time it is switched on.



Please note: All switches and sockets pictured in this brochure are continental fittings.



Mode 1: Wall and front lighting

The "working light" is ideal for routine walks to the bathroom. The overhead light illuminates the front; subtle wall lighting can be found at the back.



Mode 2: Only washbasin lighting

The warm and glare-free "orientation light" is perfectly suited to the walk to the bathroom in the night or for a relaxing time in the bath tub, because only the washbasin and the fitting are illuminated.

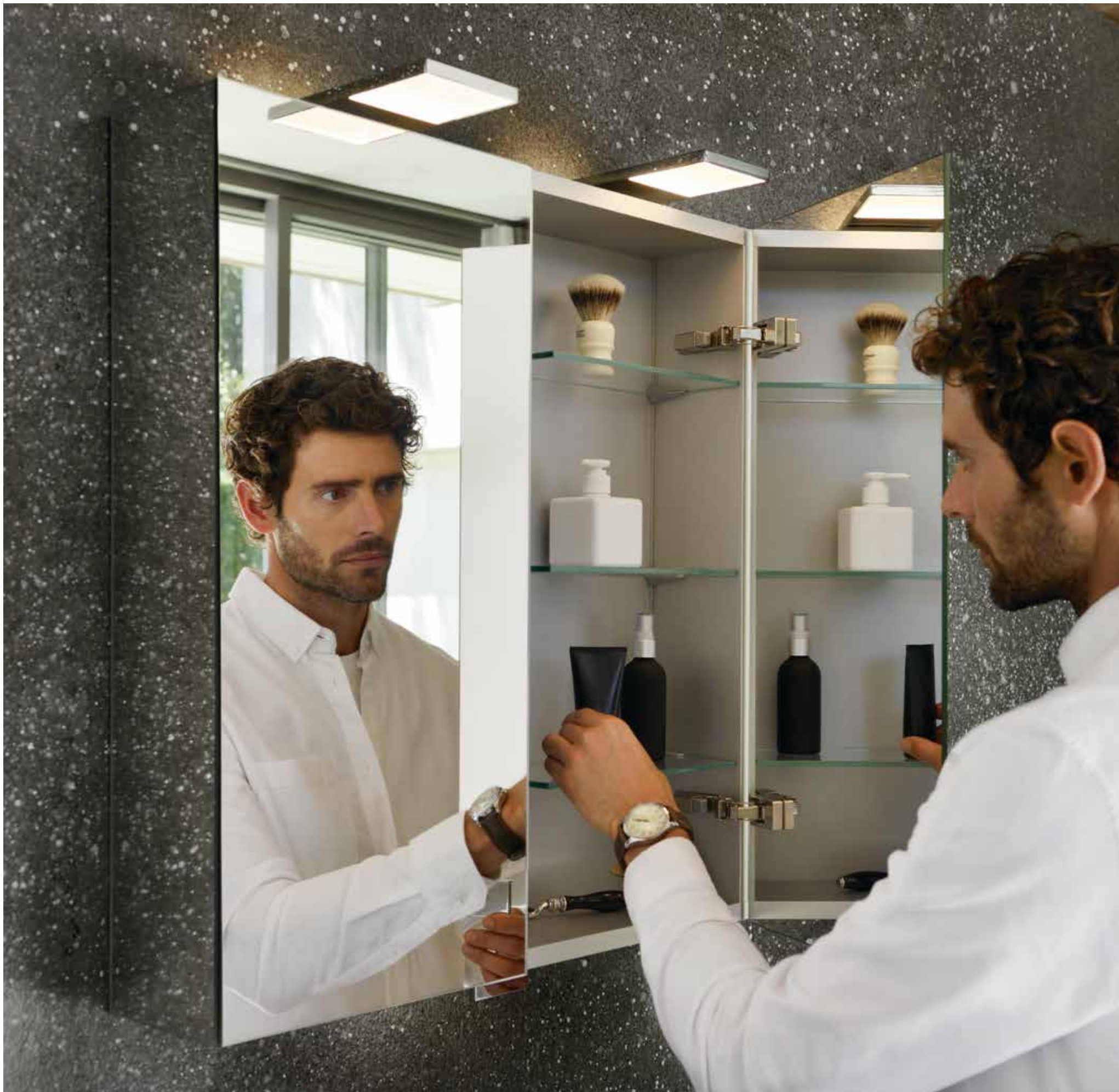


Mode 3: All three light sources

Since wall, washbasin and front lighting are all activated in this mode, everything is in a perfect light. The washbasin, the person standing in front of it, and even the wall behind.

ELEGANCE FROM ALL SIDES

KEUCO's expertise in light and storage space is incorporated in every KEUCO mirror cabinet. With its slender design the new ROYAL 15 prominently features overhead LED lights made of light-conducting material in an unobtrusive chrome plated frame. The LEDs provide frontal room lighting and indirect wall lighting. During the night the additional LED washbasin lighting serves as an orientation light. Together they offer ample light to illuminate the entire room. All three lighting scenarios can be steplessly controlled with the intuitive rotary dimmer, which always remembers the most recent setting.





The fully mirrored surface gives the contemporary look of the cabinet an even more luxurious flair. The mirror cabinet also offers impressive interior features: variable configurable storage space, fully mirrored revolving doors with soft-close hinges, and two power sockets inside. At a width of 500 mm, the ROYAL 15 has one door; at 650-1000 mm two doors, and at 1200 mm it even has three. As such it is perfectly at home when installed above double washbasins and also combined with different styles.

Please note: All switches and sockets pictured in this brochure are continental fittings.



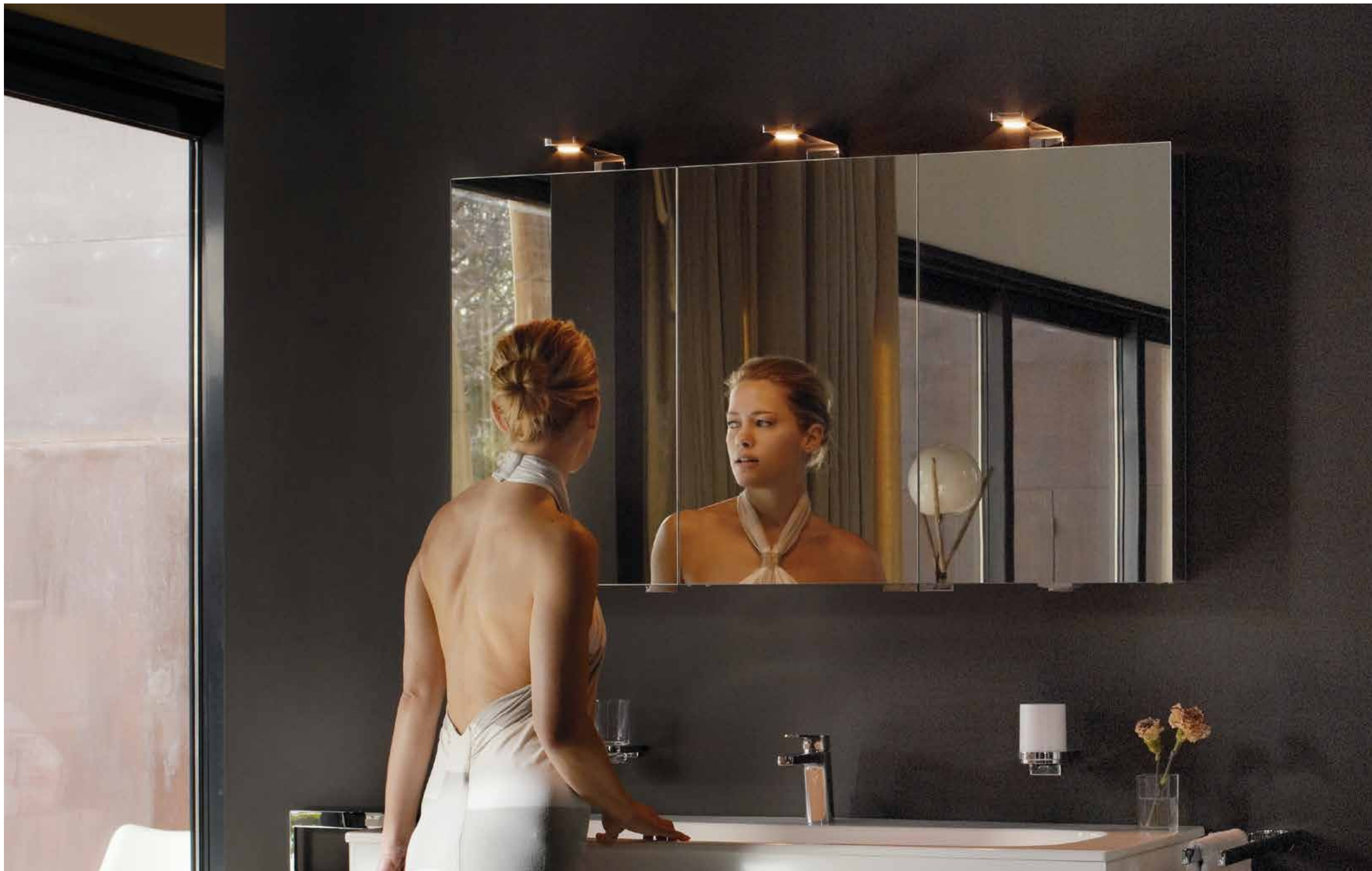
SLIMLINE THANKS TO LEDS



The particularly slim design of the ROYAL UNIVERSE lights was made possible by the use of space-saving LED technology. Modern semiconductor technology provides high light output with significantly reduced energy use – and emits a pleasant, warm white light. Thanks to the freely positionable glass shelves, the storage space inside can be adjusted to suit personal use.

ROYAL UNIVERSE can be combined with any kind of bathroom furniture and style. Behind the revolving doors, which have mirrors on both sides, there is ample space for care and cosmetic utensils. At the same time it provides a luxuriant panorama view.





HIGHLIGHT AND MIRACLE OF ORGANISATION



The intelligent lighting concept, individually organisable storage space, and attractive design make ROYAL MATCH the universal mirror cabinet suited for every bathroom.

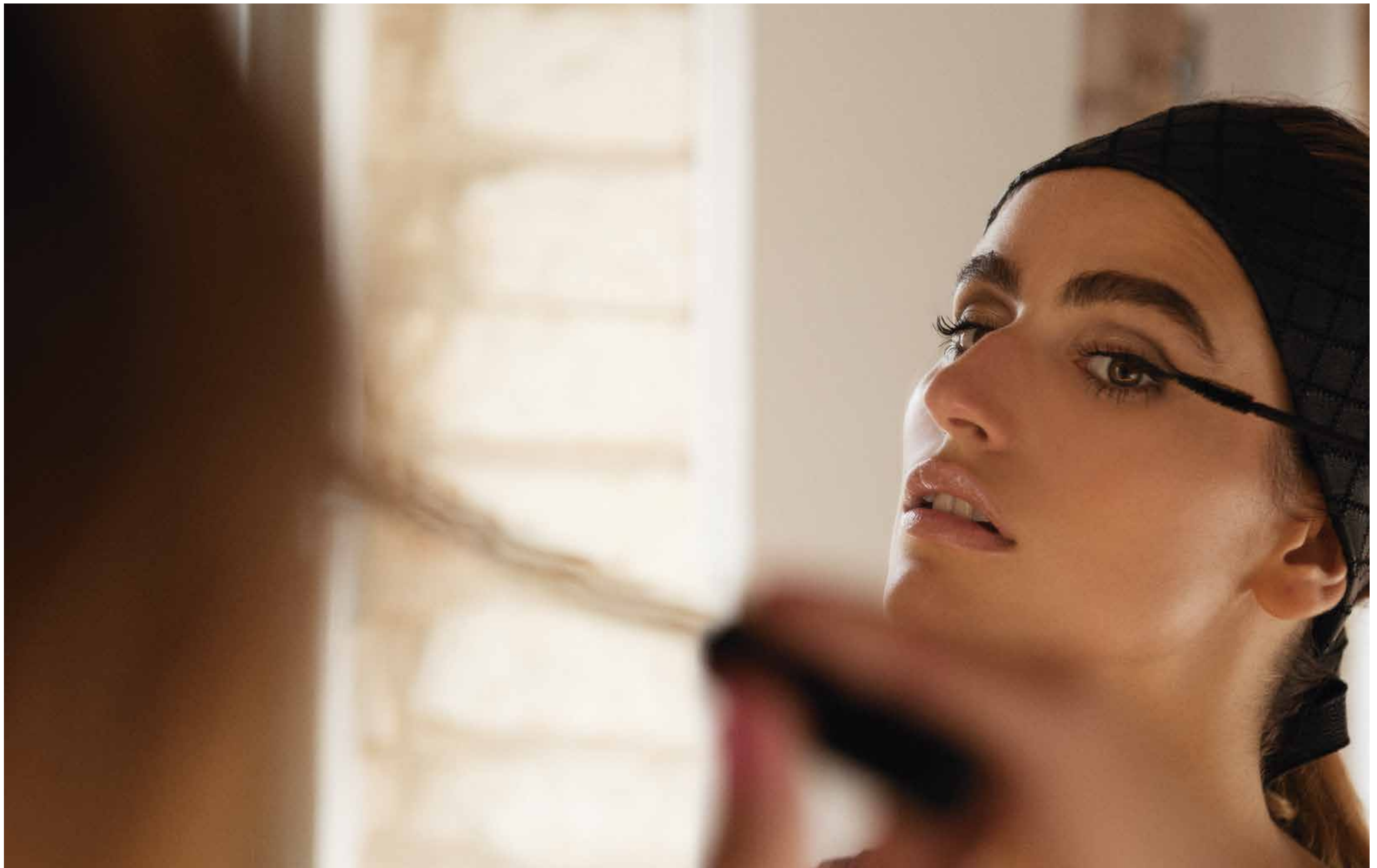
The classy design is accentuated by high quality aluminium edges. With its modern and rectangular design, which harmonizes with virtually any style, the ROYAL MATCH mirror cabinet – in sizes of 650 mm, 800 mm, 1000 mm, 1200 mm or 1300 mm – is a visual highlight in any bathroom. The special thing about the lateral LED illumination is that it can be dimmed continuously with the electronic sensor switch, and as an indirect source of light, ROYAL MATCH always creates a pleasant atmosphere in the bathroom.





Also the interior of the ROYAL MATCH mirror cabinet speaks for itself. Here, you can experience the comfort which is typical of KEUCO products. An elegant glass rear wall, internal lighting and the thought-over position of the power sockets are the proof. The central divider of the glass shelves allows one to adjust the heights of the glass shelves differently for the left and right sides, so one can organize things individually. The revolving mirror doors on both sides also offer a generous panorama-like view.





CLASSIC LIGHTING CONCEPTS



LIVING LIGHTING

In the mirror cabinets that have upwardly-opening doors, not only do the integrated light boxes produce a distinctive overall setting, but also a perfect, glare-free vision. Inside, the freely-positionable glass shelves also provide space for tall bathroom utensils. The interior mirror can be slid freely in front of the shelves, so it can always be positioned where it is needed.



THE BATHROOM IS GAINING SPACE



Again, the ROYAL 60 range has a lot to offer on the subject of mirror cabinets. For example, an integrated mirror cabinet, both clean in its lines and minimalist in design with lateral lighting. Built flush into the wall, it is the sine qua non in up-market room design. However, even as a prototype it cuts a dashing figure. Of course the interior offers the typical KEUCO comfort, optionally with complete rear wall mirrors, power points and much more.

Beyond that ROYAL 60 also offers an attractive assortment of slender furniture for contemporary bathroom furnishing.



Basin mixer and accessories COLLECTION MOLL

Please note: All switches and sockets pictured in this brochure are continental fittings.

Basin mixer and accessories EDITION 11







The ROYAL T1 INTEGRAL mirror cabinet for an in-wall installation takes up hardly more space than a mirror as the storage is neatly hidden in the cavity wall. Visually, the new collection consequently follows the elegant design and intelligent lighting system of the ROYAL T1. As for the quality of the interior the collection features dust seal, adjustable shelves, shaver socket and an integrated light box providing ample illumination. The ROYAL T1 INTEGRAL is also available without lighting but instead has a full-sized mirrored door.



On the inside of its aluminium body ROYAL INTEGRAL offers an amazing amount of flexibility. Thanks to innovative technology, the glass shelves can be flexibly arranged on the slotted rear wall to make room for larger objects.



STYLE IS REFLECTED IN THE ATTENTION TO DETAIL

Unmistakable through the characteristic all-round mirrors: The KEUCO design classic ROYAL 30. Ideal for a stylish combination with all KEUCO mirror cabinets, the mirrored tall cabinet is available in two different depths – matching any and every space. Generous proportions inside offer the possibility of 6 variable height glass shelves for your bathroom utensils.

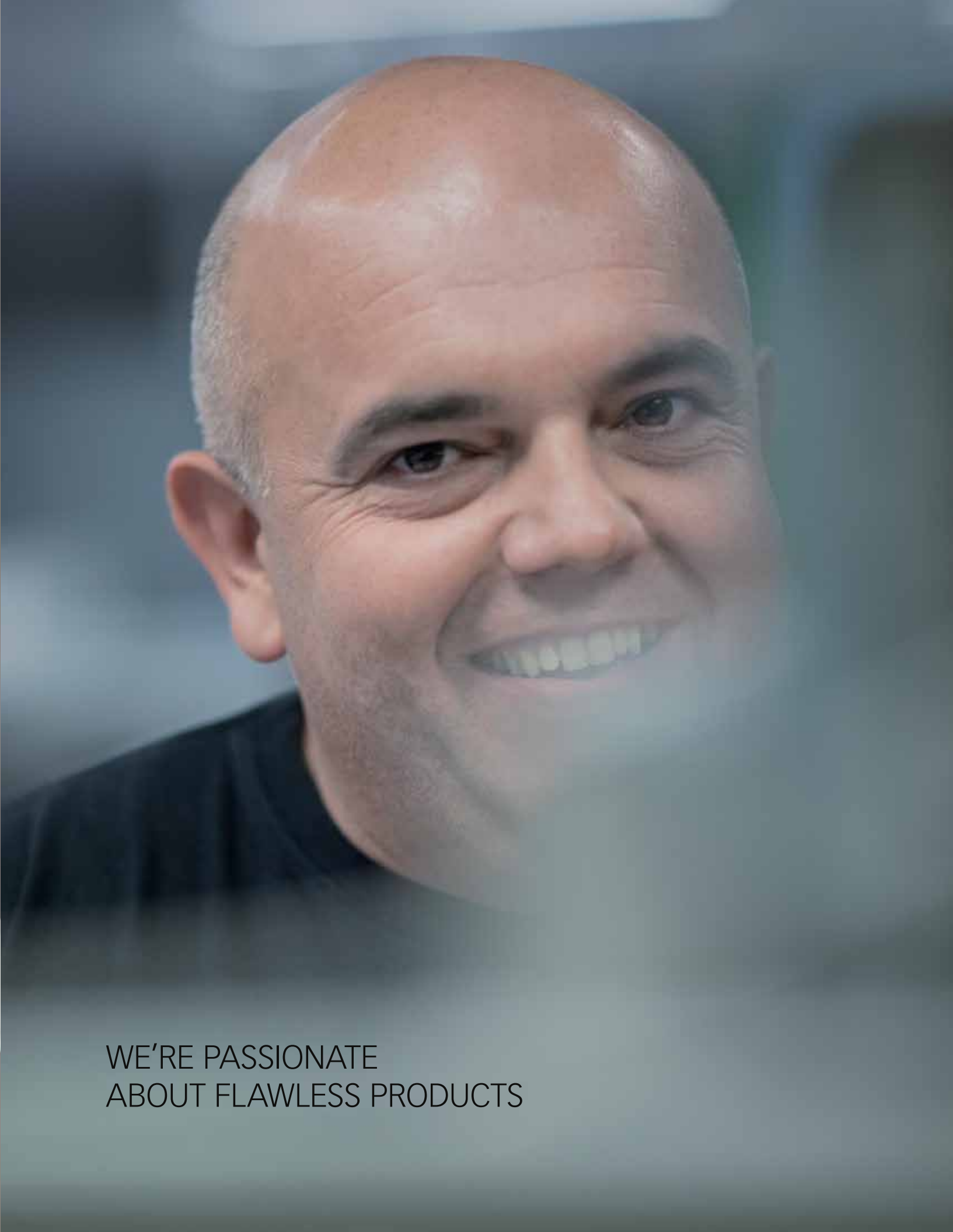


REDUCED TO THE ESSENTIALS



The attractiveness of the ROYAL T1 mirror cabinet range comes not only from their elegant shape, but also their intelligent lighting concept. Throwing gentle light into the room through satin light-holes in the mirror, the interior lighting produces a cosy atmosphere. With the cabinet opened, your face is ideally illuminated. And thanks to the two double mirror doors, one can see oneself from behind. In addition to a practical power socket, the interior features include three height-adjustable glass shelves for orderliness. The ROYAL T1 is spray-water protected so it is suitable for moist rooms in compliance with protection class IP44.





WE'RE PASSIONATE
ABOUT FLAWLESS PRODUCTS

PRODUCT OVERVIEW

EDITION 400



21501



21521



21502



21522



21503



21523

21501/21502/21503

Mirror cabinet

for recessed mounting,
2/3 hinged double sided crystal mirrored doors
Body: aluminium silver anodized, interior rear wall mirrored
Operation:

- key panel with capacitive touch sensor
- integrated extension function for e.g. light switch
- Illumination:
- adjustable light colour from 2700 kelvin (warm white) to 6500 kelvin (daylight)
- LED, infinitely variable dimming, lamps non-exchangeable

Features:

- 1 internal shaver socket
- 3/2 x 3 adjustable glass shelves
- 1/2 storage boxes with slidable glass lid
- interior lighting
- soft-closing doors

Dimensions (w x h x d):

- 710 x 650 x 154 mm (depth in front of the wall 24 mm) / 26 watt
- 1060 x 650 x 154 mm (depth in front of the wall 24 mm) / 39 watt
- 1410 x 650 x 154 mm (depth in front of the wall 24 mm) / 52 watt

21521/21522/21523

Mirror cabinet

for non-recessed mounting,
2/3 hinged double sided crystal mirrored doors
Body: aluminium silver anodized, interior rear wall mirrored
Operation:

- key panel with capacitive touch sensor
- integrated extension function for e.g. light switch
- Illumination:
- adjustable light colour from 2700 kelvin (warm white) to 6500 kelvin (daylight)
- LED, infinitely variable dimming, lamps non-exchangeable

Features:

- 1 internal shaver socket
- 3/2 x 3 adjustable glass shelves
- 1/2 storage boxes with slidable glass lid
- interior lighting
- soft-closing doors

Dimensions (w x h x d):

- 710 x 650 x 167 mm / 26 watt
- 1060 x 650 x 167 mm / 39 watt
- 1410 x 650 x 167 mm / 52 watt



21511



21531



21541



21551



21512



21532



21542



21552



21513



21533



21543



21553

21511/21512/21513**Mirror cabinet**

for recessed mounting,
2/3 hinged double sided crystal mirrored doors
Body: aluminium silver anodized, interior rear wall mirrored
Operation:

- key panel with capacitive touch sensor
- optionally to be operated via the light switch

Illumination:

- 1 light colour, 4000 kelvin (neutral white)
- LED, infinitely variable dimming, lamps non-exchangeable

Features:

- 1 internal shaver socket
- 3/2 x 3 adjustable glass shelves
- 1/2 storage boxes with slidable glass lid
- interior lighting
- soft-closing doors

Dimensions (w x h x d):

- 710 x 650 x 154 mm (depth in front of the wall 24 mm) / 26 watt
- 1060 x 650 x 154 mm (depth in front of the wall 24 mm) / 39 watt
- 1410 x 650 x 154 mm (depth in front of the wall 24 mm) / 52 watt

21531/21532/21533**Mirror cabinet**

for non-recessed mounting,
2/3 hinged double sided crystal mirrored doors
Body: aluminium silver anodized, interior rear wall mirrored
Operation:

- key panel with capacitive touch sensor
- optionally to be operated via the light switch

Illumination:

- 1 light colour, 4000 kelvin (neutral white)
- LED, infinitely variable dimming, lamps non-exchangeable

Features:

- 1 internal shaver socket
- 3/2 x 3 adjustable glass shelves
- 1/2 storage boxes with slidable glass lid
- interior lighting
- soft-closing doors

Dimensions (w x h x d):

- 710 x 650 x 167 mm / 26 watt
- 1060 x 650 x 167 mm / 39 watt
- 1410 x 650 x 167 mm / 52 watt

21541/21542/21543**Mirror cabinet**

for recessed mounting,
2/3 hinged double sided crystal mirror doors
Body: aluminium silver anodized, exterior carcass sides mirrored
Operation:

- key panel with capacitive touch sensor
- integrated extension function for e.g. light switch

Mirror heating:

- visual display of the heat up period
- automatic switch-off is performed after 20 minutes, 56 watt

Lighting:

- adjustable light colour from 2700 kelvin (warm white) to 6500 kelvin (daylight)
- LED, infinitely dimmable, lamps non-exchangeable

Features:

- 1 internal shaver socket
- 3/2 x 3 adjustable glass shelves
- 1/2 storage boxes with slidable glass lid
- interior lighting
- soft-closing doors

Dimensions (w x h x d):

- 710 x 650 x 154 mm (depth in front of the wall 24 mm) / 26 watt
- 1060 x 650 x 154 mm (depth in front of the wall 24 mm) / 39 watt
- 1410 x 650 x 154 mm (depth in front of the wall 24 mm) / 52 watt

21551/21552/21553**Mirror cabinet**

for non-recessed mounting,
2/3 hinged double sided crystal mirror doors
Body: aluminium silver anodized, exterior carcass sides mirrored
Operation:

- key panel with capacitive touch sensor
- integrated extension function for e.g. light switch

Mirror heating:

- visual display of the heat up period
- automatic switch-off is performed after 20 minutes, 56 watt

Lighting:

- adjustable light colour from 2700 kelvin (warm white) to 6500 kelvin (daylight)
- LED, infinitely dimmable, lamps non-exchangeable

Features:

- 1 internal shaver socket
- 3/2 x 3 adjustable glass shelves
- 1/2 storage boxes with slidable glass lid
- interior lighting
- soft-closing doors

Dimensions (w x h x d):

- 710 x 650 x 167 mm / 26 watt
- 1060 x 650 x 167 mm / 39 watt
- 1410 x 650 x 167 mm / 52 watt



14301



14302



14303



14304



14305



14306



14311



14312



14313



14314



14315



14316

14301 / 14311

Mirror cabinet

optionally for non-recessed or recessed mounting,
1 hinged double sided crystal mirror door,
door hinge optionally left or right,
Body: aluminium, silver anodized,
interior rear wall mirrored

Operation:

- key panel with capacitive touch sensor
- integrated extension function for e.g. light switch

Lighting:

- infinitely adjustable light colour from 2700 kelvin (warm white) to 6500 kelvin (daylight)
- frame lighting and washbasin/shelf light separately infinitely dimmable and can be switched on/off
- LED 54 watt (lifespan > 30000 hours), lamps non-exchangeable

Features:

- 1 shaver socket
- 2 adjustable glass shelves
- storage space across full width
- soft-closing door

Dimensions (w x h x d):

650 x 735 x 165 mm

(art. no. 14311: depth in front of wall 35 mm)

14302 / 14312

Mirror cabinet

optionally for non-recessed or recessed mounting,
2 hinged double sided crystal mirror doors
Body: aluminium, silver anodized,
interior rear wall mirrored

Operation:

- key panel with capacitive touch sensor
- integrated extension function for e.g. light switch

Lighting:

- infinitely adjustable light colour from 2700 kelvin (warm white) to 6500 kelvin (daylight)
- frame lighting and washbasin/shelf light separately infinitely dimmable and can be switched on/off
- LED 56 watt (lifespan > 30000 hours), lamps non-exchangeable

Features:

- 1 shaver socket
- 2 x 2 adjustable glass shelves
- storage space across full width
- soft-closing doors

Dimensions (w x h x d):

800 x 735 x 165 mm

(art. no. 14312: depth in front of wall 35 mm)

14303 / 14313

Mirror cabinet

optionally for non-recessed or recessed mounting,
2 hinged double sided crystal mirror doors
Body: aluminium, silver anodized,
interior rear wall mirrored

Operation:

- key panel with capacitive touch sensor
- integrated extension function for e.g. light switch

Lighting:

- infinitely adjustable light colour from 2700 kelvin (warm white) to 6500 kelvin (daylight)
- frame lighting and washbasin/shelf light separately infinitely dimmable and can be switched on/off
- LED 58 watt (lifespan > 30000 hours), lamps non-exchangeable

Features:

- 1 shaver socket
- 2 x 2 adjustable glass shelves
- storage space across full width
- soft-closing doors

Dimensions (w x h x d):

900 x 735 x 165 mm

(art. no. 14313: depth in front of wall 35 mm)

14304 / 14314

Mirror cabinet

optionally for non-recessed or recessed mounting,
2 hinged double sided crystal mirror doors
Body: aluminium, silver anodized,
interior rear wall mirrored

Operation:

- key panel with capacitive touch sensor
- integrated extension function for e.g. light switch

Lighting:

- infinitely adjustable light colour from 2700 kelvin (warm white) to 6500 kelvin (daylight)
- frame lighting and washbasin/shelf light separately infinitely dimmable and can be switched on/off
- LED 60 watt (lifespan > 30000 hours), lamps non-exchangeable

Features:

- 1 shaver socket
- 2 x 2 adjustable glass shelves
- storage space across full width
- soft-closing doors

Dimensions (w x h x d):

1000 x 735 x 165 mm

(art. no. 14314: depth in front of wall 35 mm)

14305 / 14315

Mirror cabinet

optionally for non-recessed or recessed mounting,
3 hinged double sided crystal mirror doors
Body: aluminium, silver anodized,
interior rear wall mirrored

Operation:

- key panel with capacitive touch sensor
- integrated extension function for e.g. light switch

Lighting:

- infinitely adjustable light colour from 2700 kelvin (warm white) to 6500 kelvin (daylight)
- frame lighting and washbasin/shelf light separately infinitely dimmable and can be switched on/off
- LED 65 watt (lifespan > 30000 hours), lamps non-exchangeable

Features:

- 1 shaver socket
- 3 x 2 adjustable glass shelves
- storage space across full width
- soft-closing doors

Dimensions (w x h x d):

1200 x 735 x 165 mm

(art. no. 14315: depth in front of wall 35 mm)

14306 / 14316

Mirror cabinet

optionally for non-recessed or recessed mounting,
3 hinged double sided crystal mirror doors
Body: aluminium, silver anodized,
interior rear wall mirrored

Operation:

- key panel with capacitive touch sensor
- integrated extension function for e.g. light switch

Lighting:

- infinitely adjustable light colour from 2700 kelvin (warm white) to 6500 kelvin (daylight)
- frame lighting and washbasin/shelf light separately infinitely dimmable and can be switched on/off
- LED 68 watt (lifespan > 30000 hours), lamps non-exchangeable

Features:

- 1 shaver socket
- 3 x 2 adjustable glass shelves
- storage space across full width
- soft-closing doors

Dimensions (w x h x d):

1400 x 735 x 165 mm

(art. no. 14316: depth in front of wall 35 mm)



24202



24204



24201



24203



24205

24201

Mirror cabinet

1 hinged double sided crystal mirror door, door hinge optionally left or right
 Body: aluminium silver anodized, exterior carcass sides mirrored
 Operation:
 external dimmer with the functions:
 – on/off
 – dim
 – changing between 3 lighting options
 Lighting:
 – vertical illumination and washbasin illumination in the bottom panel
 – LED 19 watt, light colour 3000 kelvin (warm white)
 Features:
 – 1 shaver socket (internal)
 – 3 adjustable glass shelves
 – soft-closing door
 Dimensions (w x h x d): 500 x 700 x 150 mm

24202 / 24203

Mirror cabinet

2 hinged double sided crystal mirror doors
 Body: aluminium silver anodized, exterior carcass sides mirrored
 Operation:
 external dimmer with the functions:
 – on/off
 – dim
 – changing between 3 lighting options
 Lighting:
 – vertical illumination and washbasin illumination in the bottom panel
 – LED, light colour 3000 kelvin (warm white)
 Features:
 – 1 shaver socket (internal)
 – 3 adjustable glass shelves
 – soft-closing doors
 Dimensions (w x h x d):
 650 x 700 x 150 mm / 22 watt
 800 x 700 x 150 mm / 25 watt

24204 / 24205

Mirror cabinet

3 hinged double sided crystal mirror doors
 Body: aluminium silver anodized, exterior carcass sides mirrored
 Operation:
 external dimmer with the functions:
 – on/off
 – dim
 – changing between 3 lighting options
 Lighting:
 – vertical illumination and washbasin illumination in the bottom panel
 – LED, light colour 3000 kelvin (warm white)
 Features:
 – 1 shaver socket (internal)
 – 6 adjustable glass shelves
 – soft-closing doors
 Dimensions (w x h x d):
 1000 x 700 x 150 mm / 32 watt
 1300 x 700 x 150 mm / 40 watt



13604



13602



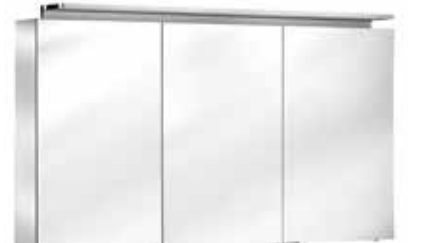
13605



13601



13603



13606

13601

Mirror cabinet

1 hinged double sided crystal mirror door, door hinge optionally left or right
 Body: aluminium, silver anodized, exterior body sides mirrored
 Operation:
 external dimmer with the functions:
 – on/off
 – dim
 – changing between 3 lighting options
 Lighting:
 – LED attachment light with direct illumination
 – indirect wall lighting
 – washbasin illumination in the bottom panel
 – LED 21 watt, light colour 3000 kelvin (warm white)
 Features:
 – 1 shaver socket (internal)
 – 3 adjustable glass shelves
 – optionally with 1 interior drawer
 Dimensions (w x h x d): 500 x 742 x 150 mm

13602 / 13603

Mirror cabinet

2 hinged double sided crystal mirror doors
 Body: aluminium, silver anodized, exterior body sides mirrored
 Operation:
 external dimmer with the functions:
 – on/off
 – dim
 – changing between 3 lighting options
 Lighting:
 – LED attachment light with direct illumination
 – indirect wall lighting
 – washbasin illumination in the bottom panel
 – LED, light colour 3000 kelvin (warm white)
 Features:
 – 1 shaver socket (internal)
 – 2 x 3 adjustable glass shelves
 – optionally with 2 interior drawers
 Dimensions (w x h x d):
 650 x 742 x 150 mm / 24 watt
 800 x 742 x 150 mm / 26 watt

13604 / 13605 / 13606

Mirror cabinet

3 hinged double sided crystal mirror doors
 Body: aluminium, silver anodized, exterior body sides mirrored
 Operation:
 external dimmer with the functions:
 – on/off
 – dim
 – changing between 3 lighting options
 Lighting:
 – LED attachment light with direct illumination
 – indirect wall lighting
 – washbasin illumination in the bottom panel
 – LED, light colour 3000 kelvin (warm white)
 Features:
 – 1 shaver socket (internal)
 – 2 x 3 adjustable glass shelves
 – optionally with 2 interior drawers
 Dimensions (w x h x d):
 1000 x 742 x 150 mm / 31 watt
 1200 x 742 x 150 mm / 42 watt
 1300 x 742 x 150 mm / 44 watt



14402



14403



14401



14404



14405

14401**Mirror cabinet**

1 hinged double sided crystal mirror door,
door hinge optionally left or right
Body: aluminium, silver anodized,
exterior body sides mirrored
Operation:
external dimmer with the functions:
– on/off
– dim
– changing between 3 lighting options
Lighting:
– LED attachment light with direct illumination
and indirect wall lighting, washbasin illumination
in the bottom panel
– light colour 3000 kelvin (warm white), LED 14 watt
(lifespan > 30000 hours), infinitely dimmable,
lamps non-exchangeable
Features:
– 1 shaver socket (internal)
– 3 adjustable glass shelves
Dimensions (w x h x d):
500 x 720 x 150 mm

14402 / 14403 / 14404**Mirror cabinet**

2 hinged double sided crystal mirror doors
Body: aluminium, silver anodized,
exterior body sides mirrored
Operation:
external dimmer with the functions:
– on/off
– dim
– changing between 3 lighting options
Lighting:
– LED attachment light with direct illumination
and indirect wall lighting, washbasin illumination
in the bottom panel
– light colour 3000 kelvin (warm white), LED 25 watt
(lifespan > 30000 hours), infinitely dimmable,
lamps non-exchangeable
Features:
– 1 shaver socket (internal)
– 2 x 3 adjustable glass shelves
Dimensions (w x h x d):
650 x 720 x 150 mm
800 x 720 x 150 mm
1000 x 720 x 150 mm

14405**Mirror cabinet**

3 hinged double sided crystal mirror doors
Body: aluminium, silver anodized,
exterior body sides mirrored
Operation:
external dimmer with the functions:
– on/off
– dim
– changing between 3 lighting options
Lighting:
– LED attachment light with direct illumination
and indirect wall lighting, washbasin illumination
in the bottom panel
– light colour 3000 kelvin (warm white), LED 39 watt
(lifespan > 30000 hours), infinitely dimmable,
lamps non-exchangeable
Features:
– 1 shaver socket (internal)
– 3 x 3 adjustable glass shelves
Dimensions (w x h x d):
1200 x 720 x 150 mm



12701



12702



12703



12704



12705



12706

12701**Mirror cabinet**

1 hinged double-sided crystal mirror door,
door hinge optionally left or right
Body: aluminium, silver anodized, mirrored sides
Lighting:
– LED lamp (1 x 6.5 W)
Features:
– 1 exterior touch switch
– 1 interior shaver socket
– 3 height adjustable glass shelves
Dimensions (w x h x d): 500 x 752 x 143 mm

12704**Mirror cabinet**

3 hinged double-sided crystal mirror doors
Body: aluminium, silver anodized, mirrored sides
Lighting:
– LED lamp (3 x 6.5 W)
Features:
– 1 exterior touch switch
– 1 interior shaver socket
– 3 x 3 height adjustable glass shelves
Dimensions (w x h x d): 1000 x 752 x 143 mm

12702**Mirror cabinet**

2 hinged double-sided crystal mirror doors
Body: aluminium, silver anodized, mirrored sides
Lighting:
– LED lamp (2 x 6.5 W)
Features:
– 1 exterior touch switch
– 1 interior shaver socket
– 2 x 3 height adjustable glass shelves
Dimensions (w x h x d): 650 x 752 x 143 mm

12705**Mirror cabinet**

3 hinged double-sided crystal mirror doors
Body: aluminium, silver anodized, mirrored sides
Lighting:
– LED lamp (3 x 6.5 W)
Features:
– 1 exterior touch switch
– 1 interior shaver socket
– 3 x 3 height adjustable glass shelves
Dimensions (w x h x d): 1300 x 752 x 143 mm

12703**Mirror cabinet**

2 hinged double-sided crystal mirror doors
Body: aluminium, silver anodized, mirrored sides
Lighting:
– LED lamp (2 x 6.5 W)
Features:
– 1 exterior touch switch
– 1 interior shaver socket
– 2 x 3 height adjustable glass shelves
Dimensions (w x h x d): 800 x 752 x 143 mm

12706**Mirror cabinet**

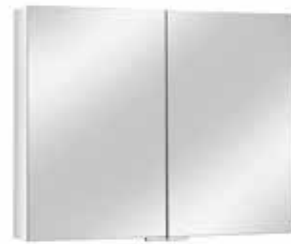
4 hinged double-sided crystal mirror doors
Body: aluminium, silver anodized, mirrored sides
Lighting:
– LED lamp (4 x 6.5 W)
Features:
– 1 exterior touch switch
– 1 interior shaver socket
– 4 x 3 height adjustable glass shelves
Dimensions (w x h x d): 1600 x 752 x 143 mm



12701



12702



12703



12704



12705



12706

12701

Mirror cabinet

1 hinged double-sided crystal mirror door, door hinge optionally left or right
 Body: aluminium, silver anodized, mirrored sides without lighting
 Features:
 – 1 interior shaver socket
 – 3 height adjustable glass shelves
 Dimensions (w x h x d): 500 x 752 x 143 mm

12704

Mirror cabinet

3 hinged double-sided crystal mirror doors
 Body: aluminium, silver anodized, mirrored sides without lighting
 Features:
 – 1 interior shaver socket
 – 3 x 3 height adjustable glass shelves
 Dimensions (w x h x d): 1000 x 752 x 143 mm

12702

Mirror cabinet

2 hinged double-sided crystal mirror doors
 Body: aluminium, silver anodized, mirrored sides without lighting
 Features:
 – 1 interior shaver socket
 – 2 x 3 height adjustable glass shelves
 Dimensions (w x h x d): 650 x 752 x 143 mm

12705

Mirror cabinet

3 hinged double-sided crystal mirror doors
 Body: aluminium, silver anodized, mirrored sides without lighting
 Features:
 – 1 interior shaver socket
 – 3 x 3 height adjustable glass shelves
 Dimensions (w x h x d): 1300 x 752 x 143 mm

12703

Mirror cabinet

2 hinged double-sided crystal mirror doors
 Body: aluminium, silver anodized, mirrored sides without lighting
 Features:
 – 1 interior shaver socket
 – 2 x 3 height adjustable glass shelves
 Dimensions (w x h x d): 800 x 752 x 143 mm

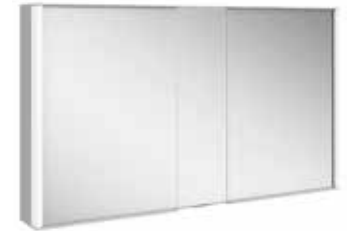
12706

Mirror cabinet

4 hinged double-sided crystal mirror doors
 Body: aluminium, silver anodized, mirrored sides without lighting
 Features:
 – 1 interior shaver socket
 – 4 x 3 height adjustable glass shelves
 Dimensions (w x h x d): 1600 x 752 x 143 mm



12802



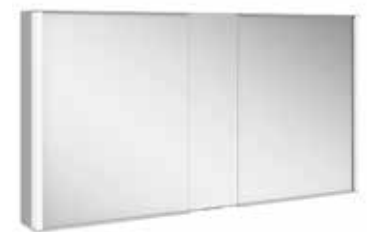
12804



12801



12803



12805

12801

Mirror cabinet

2 hinged double sided crystal mirror doors
 Body: aluminium, silver anodized, rear panel in back-lacquered white glass
 Operation:
 – control panel with capacitive touch sensor
 – optionally to be operated via the light switch
 Illumination:
 – LED 2 x 12.5 watt
 – light colour 4000 kelvin (neutral white), infinitely variable dimming
 Features:
 – 1 internal shaver socket
 – 2 x 3 adjustable glass shelves
 – interior lighting
 Dimensions (w x h x d): 650 x 700 x 160 mm

12802 / 12803

Mirror cabinet

2 hinged double sided crystal mirror doors
 Body: aluminium, silver anodized, rear panel in back-lacquered white glass
 Operation:
 – control panel with capacitive touch sensor
 – optionally to be operated via the light switch
 Illumination:
 – LED 2 x 12.5 watt
 – light colour 4000 kelvin (neutral white), infinitely variable dimming
 Features:
 – 1 internal shaver socket
 – 2 x 3 adjustable glass shelves
 – interior lighting
 Dimensions (w x h x d): 800 x 700 x 160 mm
 1000 x 700 x 160 mm

12804 / 12805

Mirror cabinet

2 hinged double sided crystal mirror doors, 1 fixed mirror unit (centric)
 Body: aluminium, silver anodized, rear panel in back-lacquered white glass
 Operation:
 – control panel with capacitive touch sensor
 – optionally to be operated via the light switch
 Illumination:
 – LED 2 x 12.5 watt
 – light colour 4000 kelvin (neutral white), infinitely variable dimming
 Features:
 – 1 internal shaver socket
 – 2 x 3 adjustable glass shelves
 – interior lighting
 Dimensions (w x h x d): 1200 x 700 x 160 mm
 1300 x 700 x 160 mm



30201



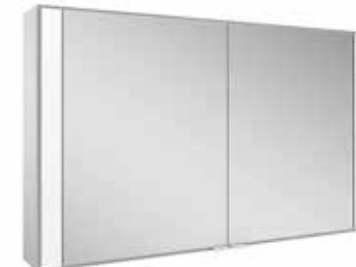
30203



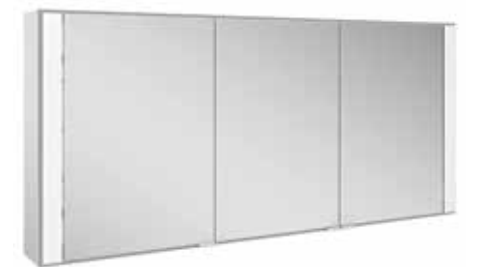
30202



22101/22111



22102/22112



22103/22113

30201**Mirror cabinet**

1 lift up double-sided crystal mirror door
Body: aluminium, silver anodized,
mirrored sides

Lighting:

– fluorescent lamps (2 x 14 W T5)

Features:

- 1 exterior pull switch
- 1 interior shaver socket
- 1 adjustable interior mirror (200 x 520 mm)
- 5 adjustable glass shelves

Dimensions (w x h x d): 650 x 650 x 160 mm

30203**Mirror cabinet**

1 lift up double-sided crystal mirror door
Body: aluminium, silver anodized,
mirrored sides

Lighting:

– fluorescent lamps (2 x 21 W T5)

Features:

- 1 exterior pull switch
- 1 interior shaver socket
- 1 adjustable interior mirror (200 x 520 mm)
- 5 adjustable glass shelves

Dimensions (w x h x d): 950 x 650 x 160 mm

30202**Mirror cabinet**

1 lift up double-sided crystal mirror door
Body: aluminium, silver anodized,
mirrored sides

Lighting:

– fluorescent lamps (2 x 28 W T5)

Features:

- 1 exterior pull switch
- 1 interior shaver socket
- 1 adjustable interior mirror (200 x 520 mm)
- 7 adjustable glass shelves

Dimensions (w x h x d): 1250 x 650 x 160 mm

22101/22111**Mirror cabinet**

for wall hung (22101) or recessed mounting (22111)
2 hinged double-sided crystal mirror doors

Body: aluminium, silver anodized,
interior rear wall mirrored

Lighting:

– fluorescent lamps (2 x 24 W T5)

Features:

- 1 sensor switch
- 1 shaver socket
- 3 height adjustable glass shelves
- soft-closing doors

Dimensions (w x h x d):

– non-recessed mounting: 700 x 650 x 162 mm

– recessed mounting: 700 x 650 x 149 mm

22102/22112**Mirror cabinet**

for wall hung (22102) or recessed mounting (22112)
2 hinged double-sided crystal mirror doors

Body: aluminium, silver anodized,
interior rear wall mirrored

Lighting:

– fluorescent lamps (2 x 24 W T5)

Features:

- 1 sensor switch
- 1 shaver socket
- 3 height adjustable glass shelves
- soft-closing doors

Dimensions (w x h x d):

– non-recessed mounting: 1050 x 650 x 162 mm

– recessed mounting: 1050 x 650 x 149 mm

22103/22113**Mirror cabinet**

for wall hung (22103) or recessed mounting (22113)
3 hinged double-sided crystal mirror doors

Body: aluminium, silver anodized,
interior rear wall mirrored

Lighting:

– fluorescent lamps (2 x 24 W T5)

Features:

- 1 sensor switch
- 1 shaver socket
- 2 x 3 height adjustable glass shelves
- soft-closing doors

Dimensions (w x h x d):

– non-recessed mounting: 1400 x 650 x 162 mm

– recessed mounting: 1400 x 650 x 149 mm



43001/43011



43002/43012



43003/43013

43001/43011
Mirror cabinet
 Protection class IP44
 for recessed installation,
 1 hinged double-sided crystal mirror door,
 optionally opening on left or right,
 with dust seal
 Body: aluminium, silver anodized

2 versions
43001
 Features:
 – with/without fluorescent light tube
 (1 x 24 Watt TC-L) and 1 interior light switch
 – 1 internal shaver socket
 – 2 adjustable glass shelves
 Dimensions (w x h x d): 388 x 700 x 115 mm

43011
 Features:
 – with/without fluorescent light tube
 (1 x 24 Watt TC-L) and 1 interior light switch
 – 1 internal shaver socket
 – 3 adjustable glass shelves
 Dimensions (w x h x d): 388 x 1000 x 115 mm

43002/43012
Mirror cabinet
 Protection class IP44
 for recessed installation,
 1 hinged double-sided crystal mirror door,
 optionally opening on left or right,
 with dust seal
 Body: aluminium, silver anodized

2 versions
43002
 Features:
 – with/without fluorescent light tube
 (1 x 36 Watt TC-L) and 1 interior light switch
 – 1 internal shaver socket
 – 2 adjustable glass shelves
 Dimensions (w x h x d): 489 x 700 x 115 mm

43012
 Features:
 – with/without fluorescent light tube
 (1 x 36 Watt TC-L) and 1 interior light switch
 – 1 internal shaver socket
 – 3 adjustable glass shelves
 Dimensions (w x h x d): 489 x 1000 x 115 mm

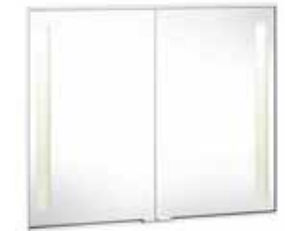
43003/43013
Mirror cabinet
 Protection class IP44
 for recessed installation,
 1 hinged double-sided crystal mirror door,
 optionally opening on left or right,
 with dust seal
 Body: aluminium, silver anodized

2 versions
43003
 Features:
 – with/without fluorescent light tube
 (1 x 40 Watt TC-L) and 1 interior light switch
 – 1 internal shaver socket
 – 2 adjustable glass shelves
 Dimensions (w x h x d): 591 x 700 x 115 mm

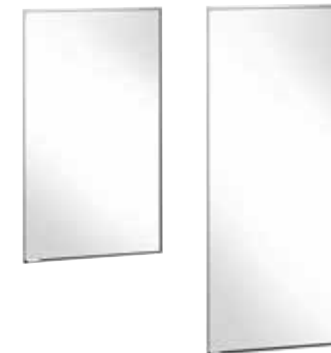
43013
 Features:
 – with/without fluorescent light tube
 (1 x 40 Watt TC-L) and 1 interior light switch
 – 1 internal shaver socket
 – 3 adjustable glass shelves
 Dimensions (w x h x d): 591 x 1000 x 115 mm



26015



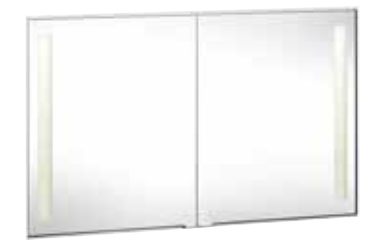
26009



26004/26014



26006/26016



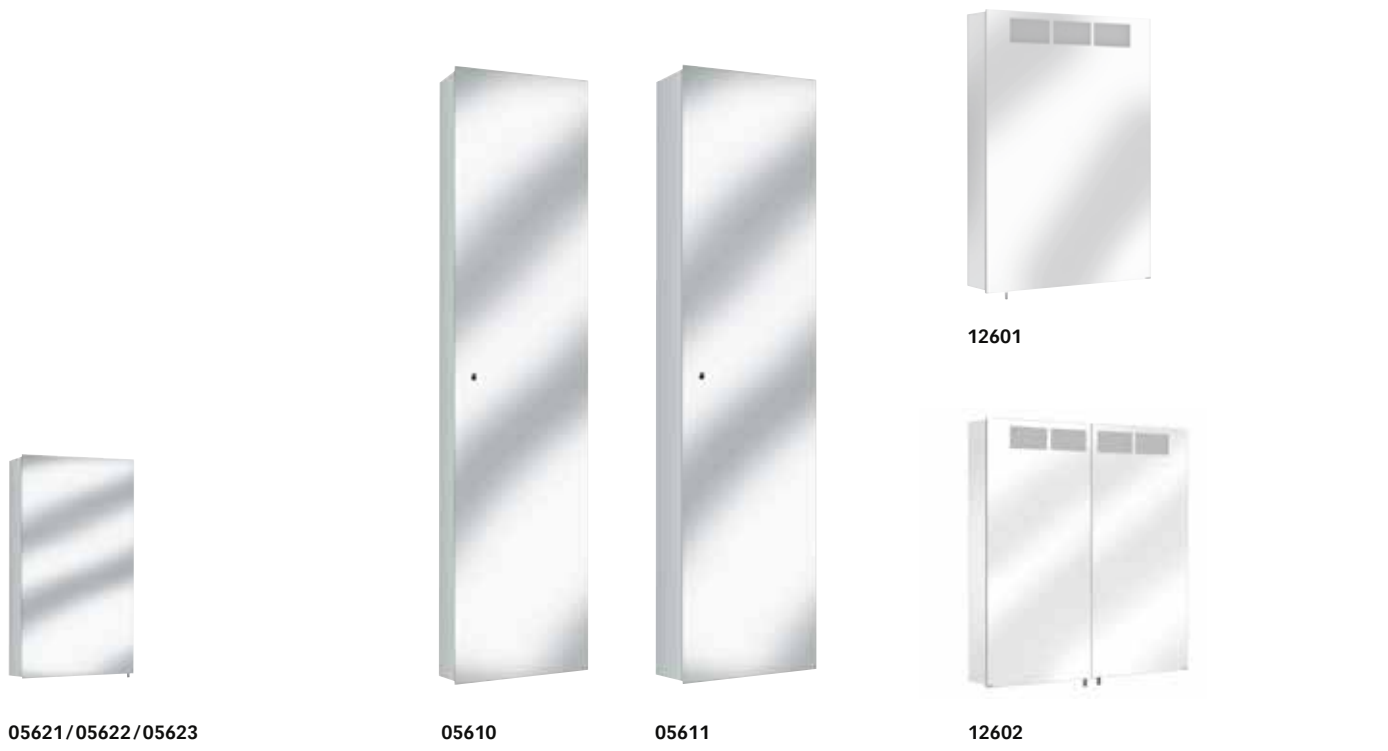
26012

26015
Mirror cabinet
 for recessed mounting
 2 hinged double-sided crystal mirror doors,
 optionally with 8.5 or 15 mm wide edging strip
 Body: aluminium, silver anodized
 Lighting:
 – fluorescent lamps (4 x 24 W T5)
 Features:
 – 1 pull switch
 – 2 shaver sockets
 – 8 variably adjustable glass shelves
 Dimensions (w x h x d):
 1498/1511 x 698/711 x 170 mm

26004/26014
Mirror cabinet
 for recessed mounting
 1 hinged double-sided crystal mirror door,
 optionally opening either to the left or right,
 optionally with 8.5 or 15 mm wide edging strip
 Body: aluminium, silver anodized
 without illumination
 Features:
 – 1 shaver socket
 – 4 or 6 variably adjustable glass shelves
 Dimensions (w x h x d):
 448/461 x 698/ 711 x 170 mm
 448/461 x 998/1011 x 170 mm

26006/26016
Mirror cabinet
 for recessed mounting
 1 hinged double-sided crystal mirror door,
 optionally opening either to the left or right,
 optionally with 8.5 or 15 mm wide edging strip
 Body: aluminium, silver anodized
 Lighting:
 – fluorescent lamps 2 x 14 W T5 (26006)
 – fluorescent lamps 2 x 21 W T5 (26016)
 optionally also without illumination
 Features:
 – 1 shaver socket
 – 4 or 6 variably adjustable glass shelves
 – optionally 1 pull switch
 Dimensions (w x h x d):
 598/611 x 698/ 711 x 170 mm
 598/611 x 998/1011 x 170 mm

26009/26012
Mirror cabinet
 for recessed mounting
 2 hinged double-sided crystal mirror doors,
 optionally with 8.5 or 15 mm wide edging strip
 Body: aluminium, silver anodized
 Lighting:
 – fluorescent lamps (2 x 24 W T5)
 Features:
 – 1 pull switch
 – 1 shaver socket
 – 6 variably adjustable glass shelves
 Dimensions (w x h x d):
 898/ 911 x 698/711 x 170 mm
 1198/1211 x 698/711 x 170 mm



05621/05622/05623
Wall cabinet

1 hinged double-sided crystal mirror door, optionally opening on left or right
 Body: aluminium, silver anodized, mirrored sides
 Interior fittings:
 – 3 adjustable glass shelves
 Dimensions (w x h x d):
 350 x 600 x 143 mm
 350 x 700 x 143 mm
 350 x 800 x 143 mm

05610
Mirror cabinet

1 hinged double-sided crystal mirror door, optionally opening on left or right
 Body: aluminium, silver anodized, mirrored sides
 Interior fittings:
 – 6 adjustable glass shelves
 Dimensions (w x h x d): 350 x 1600 x 143 mm

05611
Mirror cabinet

1 hinged double-sided crystal mirror door, optionally opening on left or right
 Body: aluminium, silver anodized, mirrored sides
 Interior fittings:
 – 6 adjustable glass shelves
 Dimensions (w x h x d): 350 x 1600 x 250 mm

12601
Mirror cabinet

1 hinged double-sided crystal mirror door, optionally opening on left or right
 Body: aluminium, silver anodized, mirrored sides
 Lighting:
 – fluorescent lamp (1 x 36 W)
 Features:
 – 1 pull switch
 – 1 shaver socket
 – 3 adjustable glass shelves
 Dimensions (w x h x d): 505 x 700 x 143 mm

12602
Mirror cabinet

2 hinged double-sided crystal mirror doors
 Body: aluminium, silver anodized, mirrored sides
 Lighting:
 – fluorescent lamp (1 x 24 W)
 Features:
 – 1 pull switch
 – 1 shaver socket
 – 3 adjustable glass shelves
 Dimensions (w x h x d): 665 x 700 x 143 mm

Various models, various dimensions: An overview of KEUCO mirror cabinets.
 Please consult this table to get an overview of the various formats of KEUCO mirror cabinets.

Mirror cabinets	350	388	400	448	489	500	505	591	598	650	665	700	710	800	898	900	950	1000	1050	1060	1198	1200	1250	1300	1400	1410	1498	1600
EDITION 400													2							2							3	
ROYAL LUMOS										1				2	2		2					3				3		
ROYAL REFLEX.2							1			2				2					3						3			
ROYAL L1							1			2				2					3				3		3			
ROYAL 15							1			2				2					2				3					
ROYAL UNIVERSE							1			2				2					3						3			4
ROYAL MATCH										2				2					2				2		2			
EDITION 300										1								1						1				
ROYAL 60													1							2						3		
ROYAL T1 INTEGRAL		1						1																				
ROYAL INTEGRAL							1									2						2						2
ROYAL 30	1																											
ROYAL T1										1				2														

Number of doors

The extraordinary surface characteristics and extremely fine colour nuances of our products can only be reproduced to a certain degree in print. Only the original KEUCO products, which can be viewed in sanitary trade dealers' showrooms, can provide you with an optimum impression.

Reproduction and copying, even if only excerpts, are only permitted by explicit permission of the manufacturer, and with the inclusion of source information.
KEUCO GmbH & Co. KG, Postfach 1365, D-58653 Hemer

We reserve the right to make engineering changes for the purpose of improvement, as well as colour and design changes that are deemed necessary. Errors and omissions excepted.

Concept, design, text and lithography: KONTRAST Communication Services GmbH, Düsseldorf
Photography: Stephan Schacher, New York; Casa, Münster; PF-Medien, Menden
Printing: Meinders & Elstermann GmbH & Co. KG, Belm, Osnabrück
Printed on GALAXI Keramik. Supplied by Papier Union.

For more information please visit www.keuco.de